



Deni Associates
FORT MYERS, FLORIDA

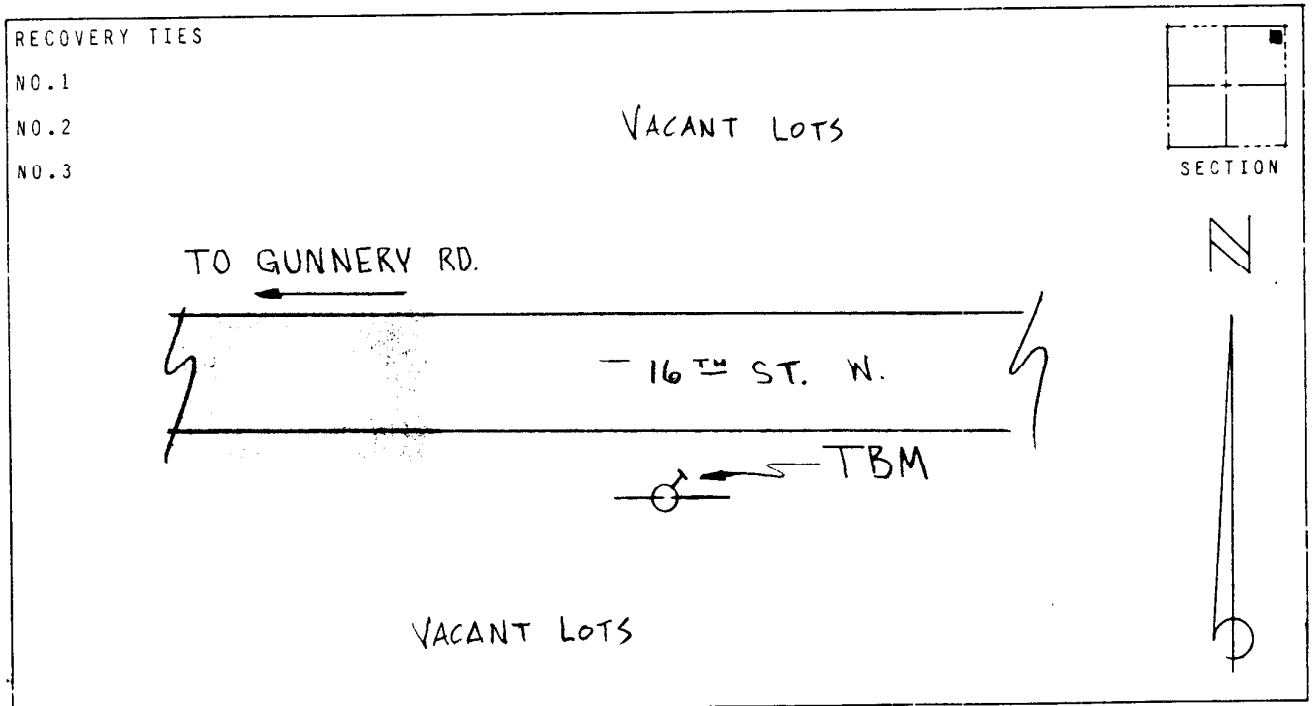
LEE COUNTY, FLORIDA
AERIAL MAPPING PROJECT

MAPPING BY:
WOOLPERT CONSULTANTS

DESIGNATION TBM 19-57 COUNTY LEE STATE FL
 LOCATED IN SEC 28 TWP 44S RGE 26E USGS QUAD MAP OLGA
 TO REACH SURVEY MARK FROM INT. OF LEE BLVD. & GUNNERY RD. IN
LEHIGH ACRES: GO N. 0.65 MI ± TO RD. INT; THENCE EAST
ALONG 16TH ST. W. 0.19 MI ± TO MARK ON S. SIDE OF RD.

TYPE OF 8" SPIKE ON NE FACE OF POWER POLE
 MARK _____ DATE SET DEC. 1988
 HORIZONTAL CONTROL ORIGINATED ON 2ND ORDER CONTROL BY N.G.S. AND F.D.O.T.
 ON NORTH AMERICAN DATUM OF 1927 (1927 ADJ) ON NORTH AMERICAN DATUM OF 1983
 COORDINATES (FT) COORDINATES (FT)
 NORTHING (Y) _____ NORTHING (Y) _____
 EASTING (X) _____ EASTING (X) _____
3RD ORDER COORDINATES STATE AND ZONE FLORIDA, MERCATOR WEST

FIELD BOOK _____ PAGE _____ SKETCH BY WGH



VERTICAL CONTROL ORIGINATED ON 2ND ORDER CONTROL ESTABLISHED BY N.G.S. AND F.D.O.T.
 ON NATIONAL GEODETIC VERTICAL DATUM OF 1929
 ELEVATION (FT) 23.85 , 3RD ORDER LEVEL BOOK V 19 PAGE 57