



Deni Associates  
FORT MYERS, FLORIDA

LEE COUNTY, FLORIDA  
AERIAL MAPPING PROJECT

MAPPING BY:  
WOOLPERT CONSULTANTS

DESIGNATION TBU 18-1 A COUNTY LEE STATE FL

LOCATED IN SEC 3 TWP 44S RGE 26E USGS QUAD MAP OLGA

TO REACH SURVEY MARK FROM BUCKINGHAM ROAD & CEMETERY ROAD  
GO EAST FOR 1.25 MILES TO HIGGINS ROAD & MARK.

TYPE OF 8" SPIKE IN SE FACE OF 10" PINE TREE.

MARK \_\_\_\_\_ DATE SET JULY 1988

HORIZONTAL CONTROL ORIGINATED ON 2ND ORDER CONTROL BY N.G.S. AND F.D.O.T.

ON NORTH AMERICAN DATUM OF 1927 (1927 ADJ) ON NORTH AMERICAN DATUM OF 1983

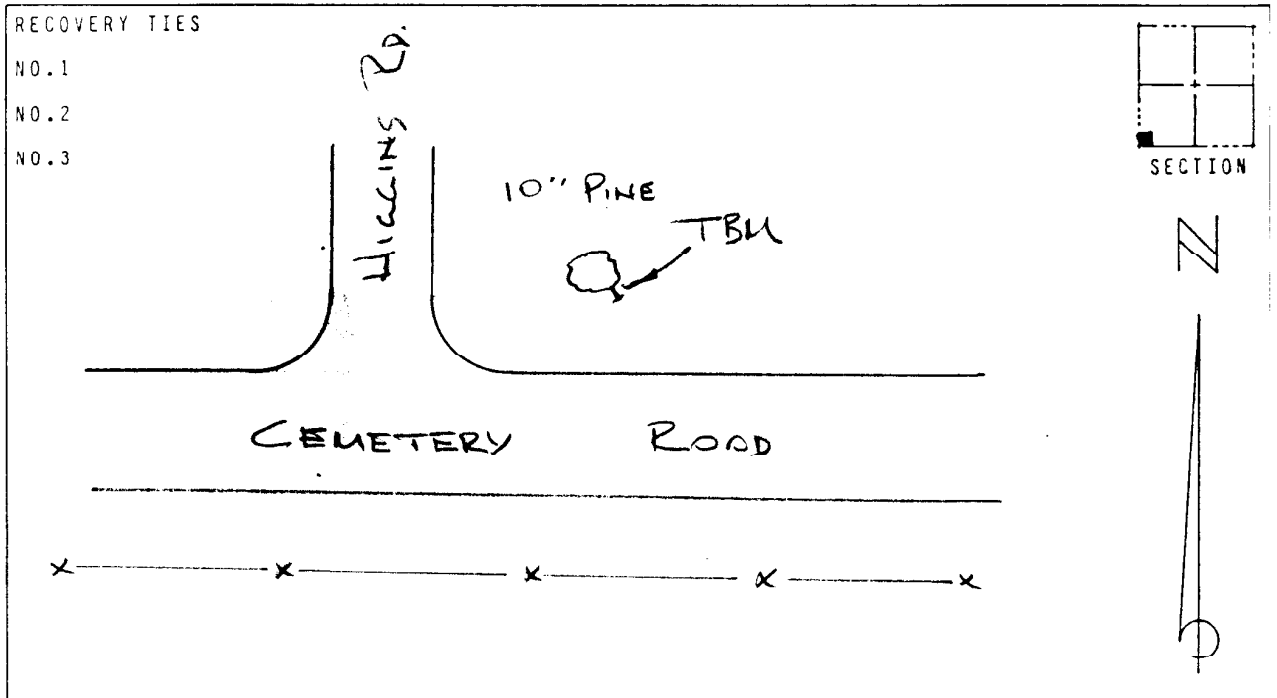
COORDINATES (FT) COORDINATES (FT)

NORTHING (Y) \_\_\_\_\_ NORTHING (Y) \_\_\_\_\_

EASTING (X) \_\_\_\_\_ EASTING (X) \_\_\_\_\_

3RD ORDER COORDINATES STATE AND ZONE FLORIDA, MERCATOR WEST

FIELD BOOK \_\_\_\_\_ PAGE \_\_\_\_\_ SKETCH BY RLW



VERTICAL CONTROL ORIGINATED ON 2ND ORDER CONTROL ESTABLISHED BY N.G.S. AND F.D.O.T.

ON NATIONAL GEODETIC VERTICAL DATUM OF 1989

ELEVATION FT 18.96 3RD ORDER LEVEL BOOK V 13 PAGE 1