



Deni Associates
FORT MYERS, FLORIDA

LEE COUNTY, FLORIDA
AERIAL MAPPING PROJECT

MAPPING BY:
WOOLPERT CONSULTANTS

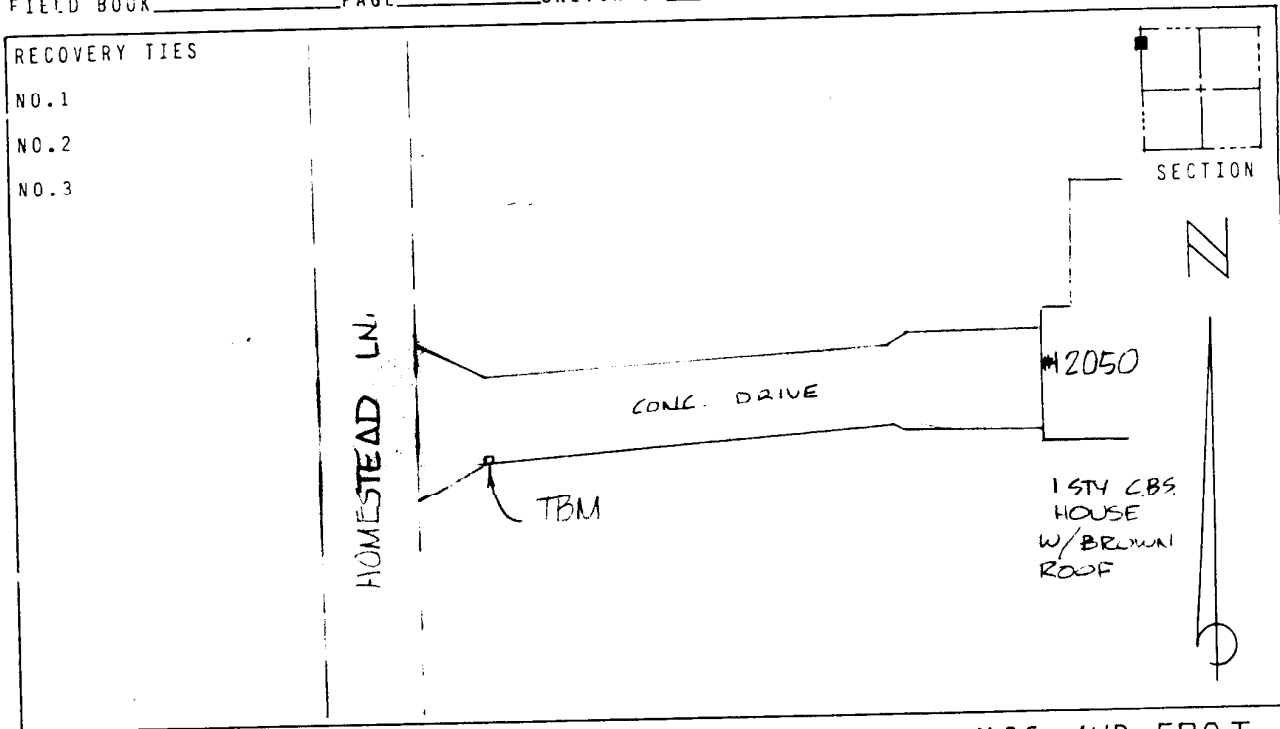
DESIGNATION TBM 18-43 COUNTY LEE STATE FL
LOCATED IN SEC 7 TWP 44S RGE 26E USGS QUAD MAP FORT MYERS
TO REACH SURVEY MARK FROM TICE ST @ ITS THENCE E. 2.5 MI.
ALONG TICE/HOMESTEAD LN TO 90° BEND; THENCE S.
300'± TO MARK.

TYPE OF THIS "I" ON CONC. DRIVE

MARK _____ DATE SET SEPT. 1988
HORIZONTAL CONTROL ORIGINATED ON 2ND ORDER CONTROL BY N.G.S. AND F.D.O.T.

ON NORTH AMERICAN DATUM OF 1927 (1927 ADJ) ON NORTH AMERICAN DATUM OF 1983
COORDINATES (FT) COORDINATES (FT)
NORTHING (Y) _____ NORTHING (Y) _____
EASTING (X) _____ EASTING (X) _____
3RD ORDER COORDINATES STATE AND ZONE FLORIDA, MERCATOR WEST

FIELD BOOK _____ PAGE _____ SKETCH BY DSW



VERTICAL CONTROL ORIGINATED ON 2ND ORDER CONTROL ESTABLISHED BY N.G.S. AND F.D.O.T.
ON NATIONAL GEODETIC VERTICAL DATUM OF 1929.

ELEVATION (FT) 18.24, 3RD ORDER LEVEL BOOK V13 PAGE 43