



Deni Associates

7025 N.W. 4th St. • Plantation, Florida 33317

LEE COUNTY, FLORIDA AERIAL MAPPING PROJECT

MAPPING BY
HAMRICK AERIAL SURVEYS, INC.
CLEARWATER, FLORIDA

Marker Designation TBM SMCV-5 County LEE State FL

Located in Sec. 27 Twp. 44S Rge. 29E U.S.G.S. Quad Map FT. MYERS S.E. 7.5mir

To reach point from INT 1-75 & S.R. 82 (E): GO E. 0.7 MI. TO
ENTRANCE TO ZIPPERER FARMS (DRIVE TO S.); THENCE
S. 0.4 MI. TO POINT.

Type of Marker 8" SPK IN GATE POST Date set AUGUST 19 80

HORIZONTAL CONTROL originated on 2nd order control established by FLA. D. O. T.

in year, on North American 1927 datum.

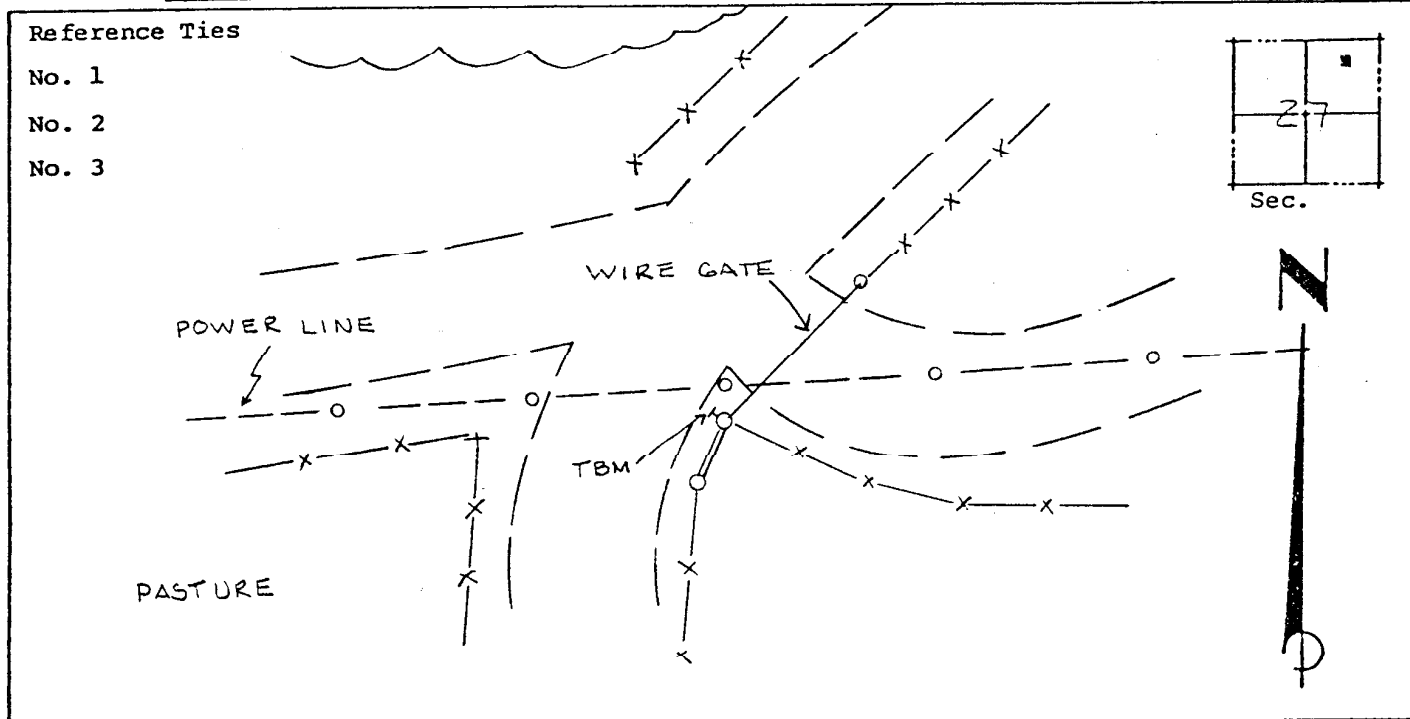
Coordinates: North (y) _____ East (x) _____
(feet)

3rd Order State and Zone Florida, Mercator West

Reference Bearings to Station or Object:

Description	Bearing	Distance

Field Book _____ Page _____ Sketch by M. M. HOMOLA



VERTICAL CONTROL originated on 3RD order control established by USGS agency

in 1971, on National Geodetic Survey Datum of 1929 datum.

Elevation 21.90, 3rd Order Level Book V3 Page 13
(feet)