



# Deni Associates

7025 N.W. 4th St. • Plantation, Florida 33317

## LEE COUNTY, FLORIDA AERIAL MAPPING PROJECT

MAPPING BY  
HAMRICK AERIAL SURVEYS, INC.  
CLEARWATER, FLORIDA

Marker Designation TBM SMCV-1 County LEE State FL  
Located in Sec. 26|25 Twp. 41S. Rge. 25 E. U.S.G.S. Quad Map FORT MYERS SE 7.5min.

To reach point from \_\_\_\_\_  
\_\_\_\_\_ AT SECTION CORNER OF 26 | 25  
\_\_\_\_\_ 35 | 36

Type of Marker TOP OF CONG. SECTION CORNER POST Date set JUNE 19 80

HORIZONTAL CONTROL originated on 2nd order control established by FLA. D.O.T.

in 1972 year, on \_\_\_\_\_ North American 1927 datum. \_\_\_\_\_ agency

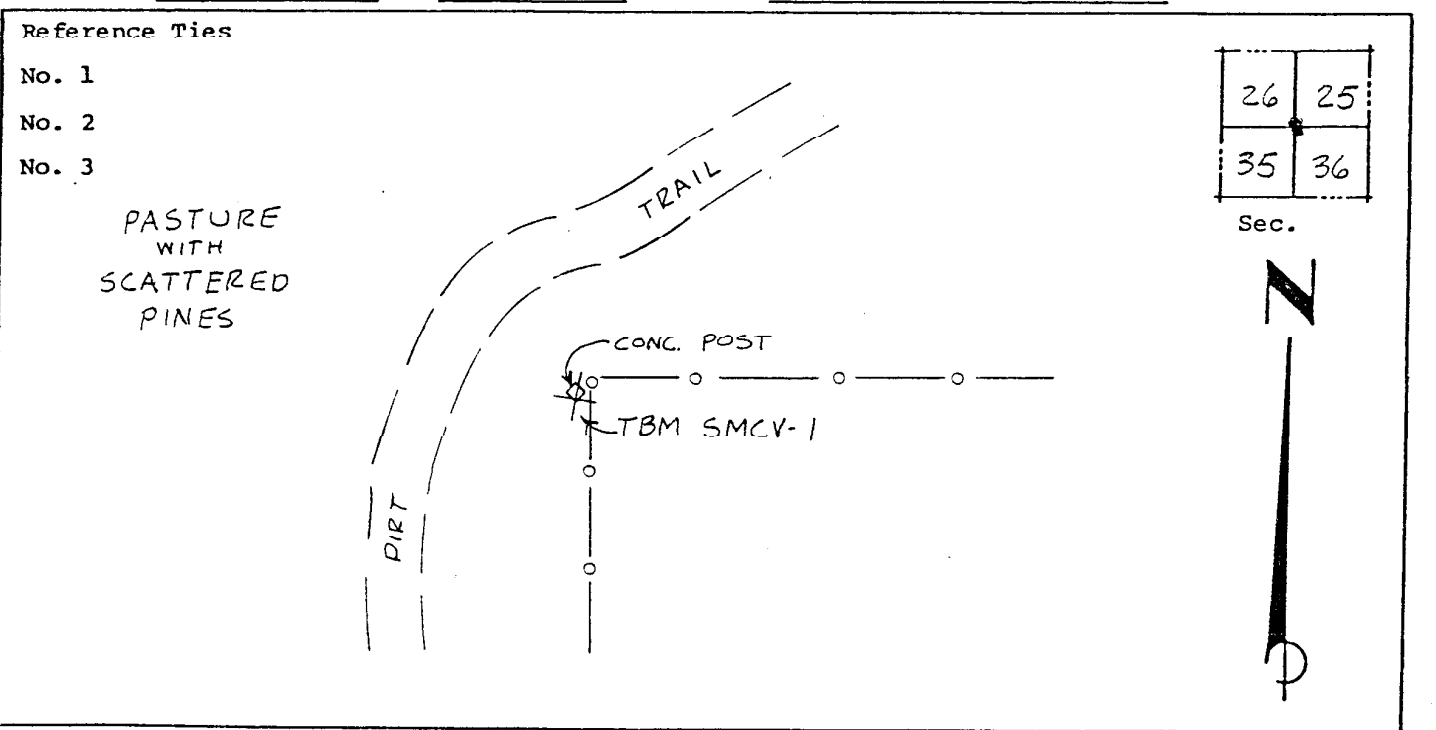
Coordinates: North (y) \_\_\_\_\_ East (x) \_\_\_\_\_  
(feet)

3rd Order State and Zone Florida, Mercator West

Reference Bearings to Station or Object:

Description	Bearing	Distance

Field Book \_\_\_\_\_ Page \_\_\_\_\_ Sketch by B.R. HOMOLA



VERTICAL CONTROL originated on 3<sup>rd</sup> order control established by USGS agency  
in 1971 year, on \_\_\_\_\_ National Geodetic Survey Datum of 1929 datum.

Elevation 21.28 (feet), 3rd Order Level Book 11 Page 1