



Deni Associates

7025 N.W. 4th St. • Plantation, Florida 33317

LEE COUNTY, FLORIDA AERIAL MAPPING PROJECT

MAPPING BY
HAMRICK AERIAL SURVEYS, INC.
CLEARWATER, FLORIDA

Marker Designation TBM PISV-23 County LEE State FL
Located in Sec. 11 Twp. 43S Rge. 20E U.S.G.S. Quad Map FLAIDA 7.5min.

To reach point from INT. GASPARILLA RD. & LEE-CHARLOTTE CO. LINE:
GO S. 1.4 MI ± TO 27TH ST. & MARKER.

Type of Marker 8" SPK. IN E FACE OF P POLE Date set FEB. 19 81

HORIZONTAL CONTROL originated on _____ order control established by _____ agency

in _____, on North American 1927 datum.

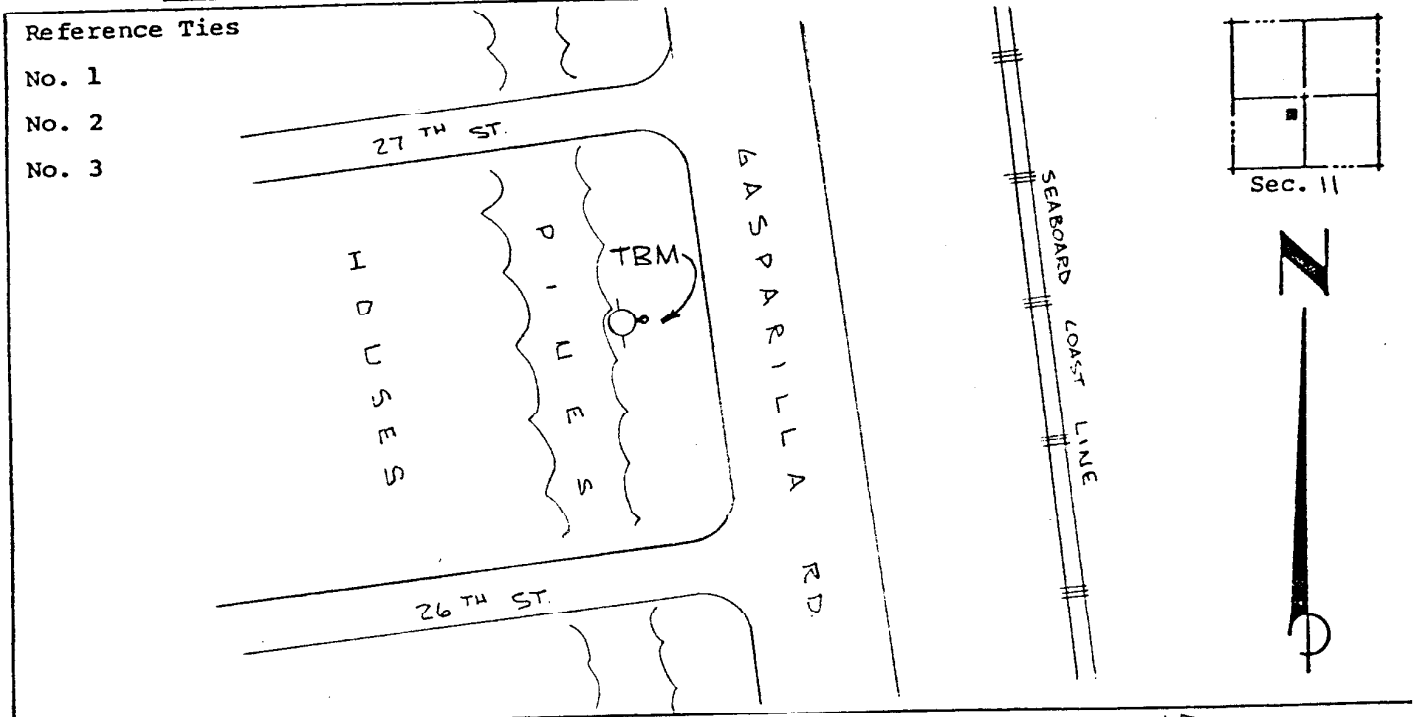
Coordinates: North (y) _____ East (x) _____

(feet) 3rd Order State and Zone Florida, Mercator West

Reference Bearings to Station or Object:

Description	Bearing	Distance

Field Book _____ Page _____ Sketch by A. LETHERY



VERTICAL CONTROL originated on 3RD order control established by DNR agency

in 1975, on National Geodetic Survey Datum of 1929 datum.

year _____
Elevation 05.29, 3rd Order Level Book V3 Page 42
(feet)