



7025 N.W. 4th St. - Plantation, Florida 33317

U.S. COAST AND GEODETIC SURVEY  
MAPPING BY  
HAMRICK AERIAL SURVEYS, INC.  
CLEARWATER, FLORIDA

Marker Designation TBM SV-40 County LEE State FL  
Located in Sec. 1 Twp. 44 S. Rge. 24 E. U.S.G.S. Quad Map FT. MYERS NW 7.5min.

To reach point from INT. OF S.R. 78/ BAYSHORE RD. AND U.S. BUS. 41 IN  
N. FT. MYERS: GO S. 1.3 MI. ± TO E. NORTH SHORE AV; THENCE  
NE 0.3 MI ± TO TBM

Type of Marker WILFELD "T" ON FLANGE BOLT ON Date set NOV. - DEC. 19 80  
BASE OF F.H.

HORIZONTAL CONTROL originated on \_\_\_\_\_ order control established by \_\_\_\_\_ agency

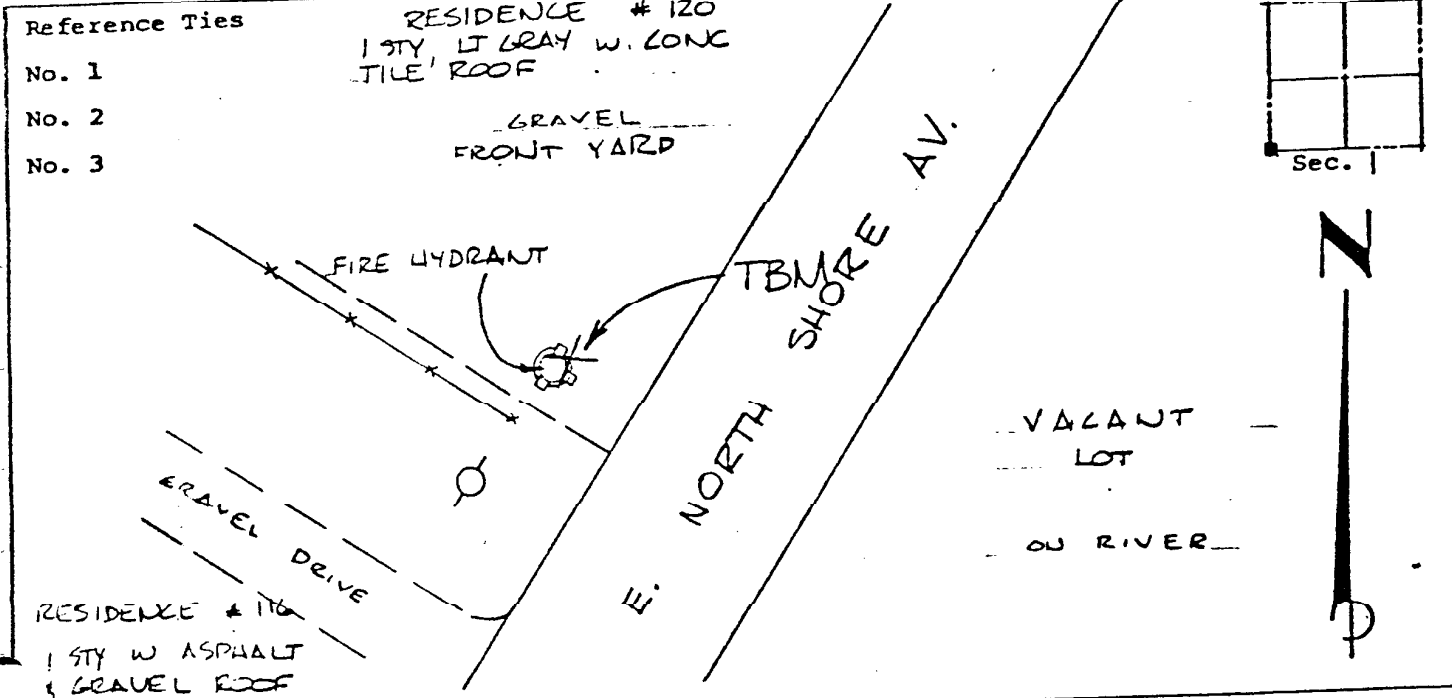
in \_\_\_\_\_, on North American 1927 datum.

Coordinates: North (y) \_\_\_\_\_ East (x) \_\_\_\_\_  
(feet)

Reference Bearings to Station or Object:  
3rd Order State and Zone Florida, Mercator West

Description	Bearing	Distance

Field Book 1 Page \_\_\_\_\_ Sketch by D.W. ALBERTSEN



VERTICAL CONTROL originated on 1st order control established by U.S.C. & G.S. agency

in 1966, on National Geodetic Survey Datum of 1929 datum.

year 1966 Elevation 04.21, 3rd Order Level Book 3 Page 37