



7025 N.W. 4th St. - Plantation, Florida 33317

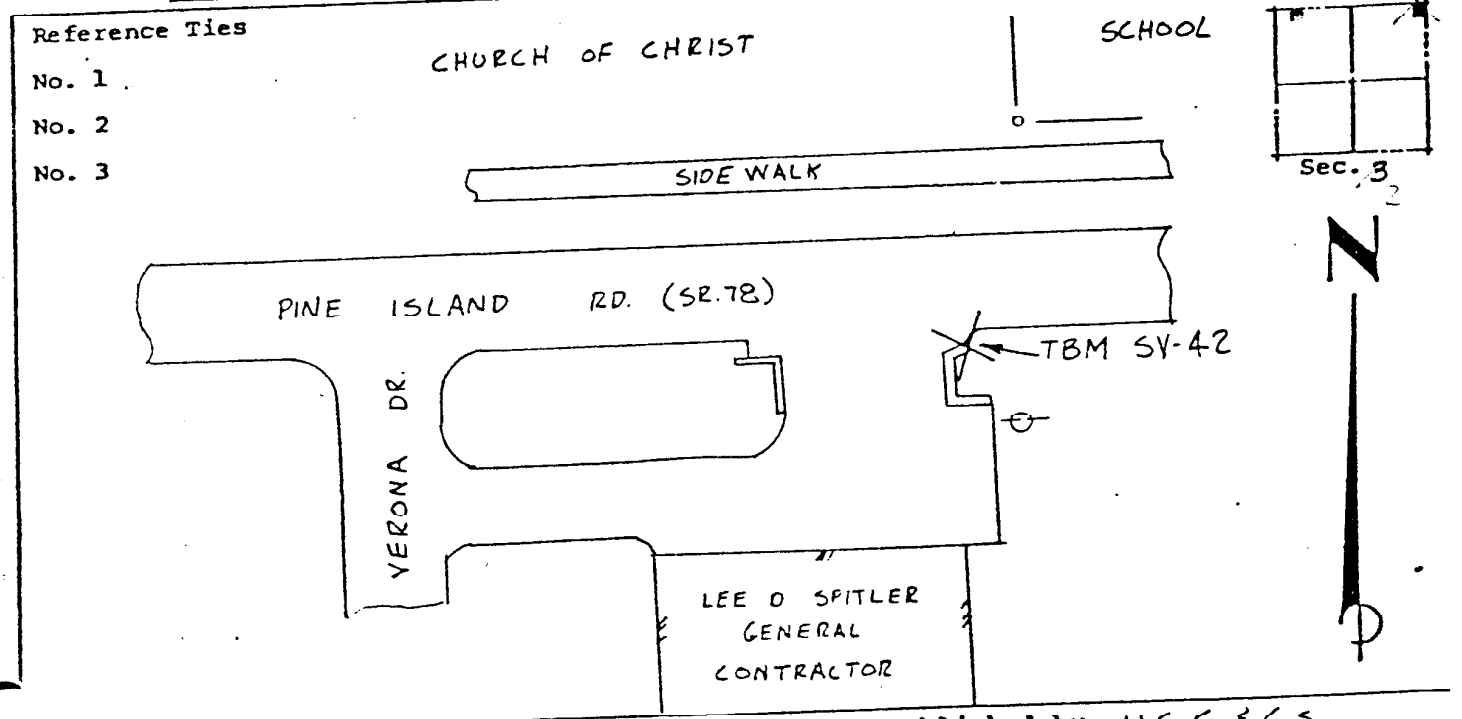
U.S. ARMY CORP OF ENGINEERS
MAPPING BY
HAMRICK AERIAL SURVEYS, INC.
CLEARWATER, FLORIDA

Marker Designation TBM SV-42 County LEE State FL
Located in Sec. 3 Twp. 44S Rge. 24E U.S.G.S. Quad Map FORT MYERS Nw. 7.5min
To reach point from INT. US. 41 & SR. 78 IN N. FT. MYERS. GO E. ON SR. 78.
0.6 MI TO MARKER.

Type of Marker CHISELED "D" ON CONC HEADWALL Date set NOV. - DEC. 19 80
HORIZONTAL CONTROL originated on _____ order control established by _____ agency
in _____ year, on _____ North American 1927 _____ datum.
Coordinates: North (y) _____ East (x) _____
(feet) _____
Reference Bearings to Station or Object: _____
State and Zone Florida, Mercator West
3rd Order

Description	Bearing	Distance

Field Book 1 Page _____ Sketch by B.R. HOMOLA



VERTICAL CONTROL originated on 1st order control established by U.S.C. & G.S. agency
in 1966 year, on National Geodetic Survey Datum of 1929 datum.
Elevation 13.41 _____, 3rd Order Level Book 3 Page 55