



Deni Associates

7025 N.W. 4th St. - Plantation, Florida 33317

LEE COUNTY, FLORIDA  
AERIAL MAPPING PROJECT

MAPPING BY  
HAMRICK AERIAL SURVEYS, INC.  
CLEARWATER, FLORIDA

Marker Designation BM E241 (US&GS) County LEE State FL

Located in Sec. 27 Twp. 4AS Rge. 22E U.S.G.S. Quad Map PINE ISLAND CENTER 7.5mir

To reach point from INT. OF SR. 78 & 767 IN PINE ISLAND CENTER: GOE ON  
SR. 78 1.1 MI.± TO MARKER.

Type of Marker BRASS CAP SET IN CONC., 0.3 BLW GRD. Date <sup>RECOVERED</sup> set MAY 19 81

HORIZONTAL CONTROL originated on \_\_\_\_\_ order control established by \_\_\_\_\_

in \_\_\_\_\_, on \_\_\_\_\_ North American 1927 \_\_\_\_\_ datum. \_\_\_\_\_ agency

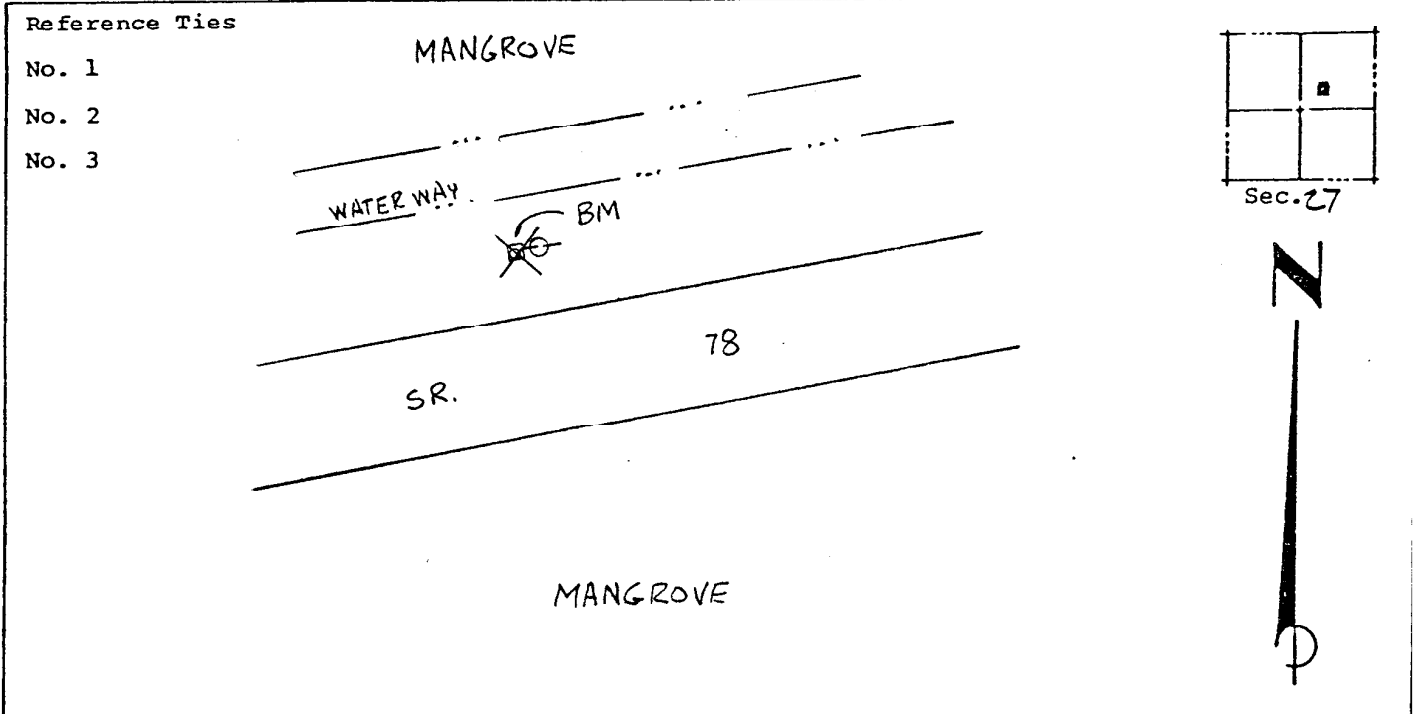
Coordinates: North (y) \_\_\_\_\_ East (x) \_\_\_\_\_  
(feet)

3rd Order State and Zone Florida, Mercator West

Reference Bearings to Station or Object:

Description	Bearing	Distance

Field Book \_\_\_\_\_ Page \_\_\_\_\_ Sketch by B.R. HOMOLA



VERTICAL CONTROL originated on 1st order control established by US&GS

in 1966, on \_\_\_\_\_ National Geodetic Survey Datum of 1929 \_\_\_\_\_ datum. \_\_\_\_\_ agency

Elevation 1.394, 3rd Order Level Book V4 Page 40  
(feet)