



Deni Associates

7025 N.W. 4th St. • Plantation, Florida 33317

LEE COUNTY, FLORIDA AERIAL MAPPING PROJECT

MAPPING BY
HAMRICK AERIAL SURVEYS, INC.
CLEARWATER, FLORIDA

Marker Designation BM D241 (USCGS) County LEE State FL

Located in sec. 26 Twp. 44S Rge. 22E U.S.G.S. Quad Map PINE ISLAND CENTER 7.5min

To reach point from INT. OF SR. 78 & 767 IN PINE ISLAND CENTER: GO E. ON SR. 78
2.1 MI. ± TO MARKER.

Type of Marker BRASS CAP SET IN CONC., FLUSH W/GRD Date ^{RECOVERED} set MAY 19 81

HORIZONTAL CONTROL originated on _____ order control established by _____ agency

in _____, on _____ North American 1927 datum.

Coordinates: North (y) _____ East (x) _____
(feet)

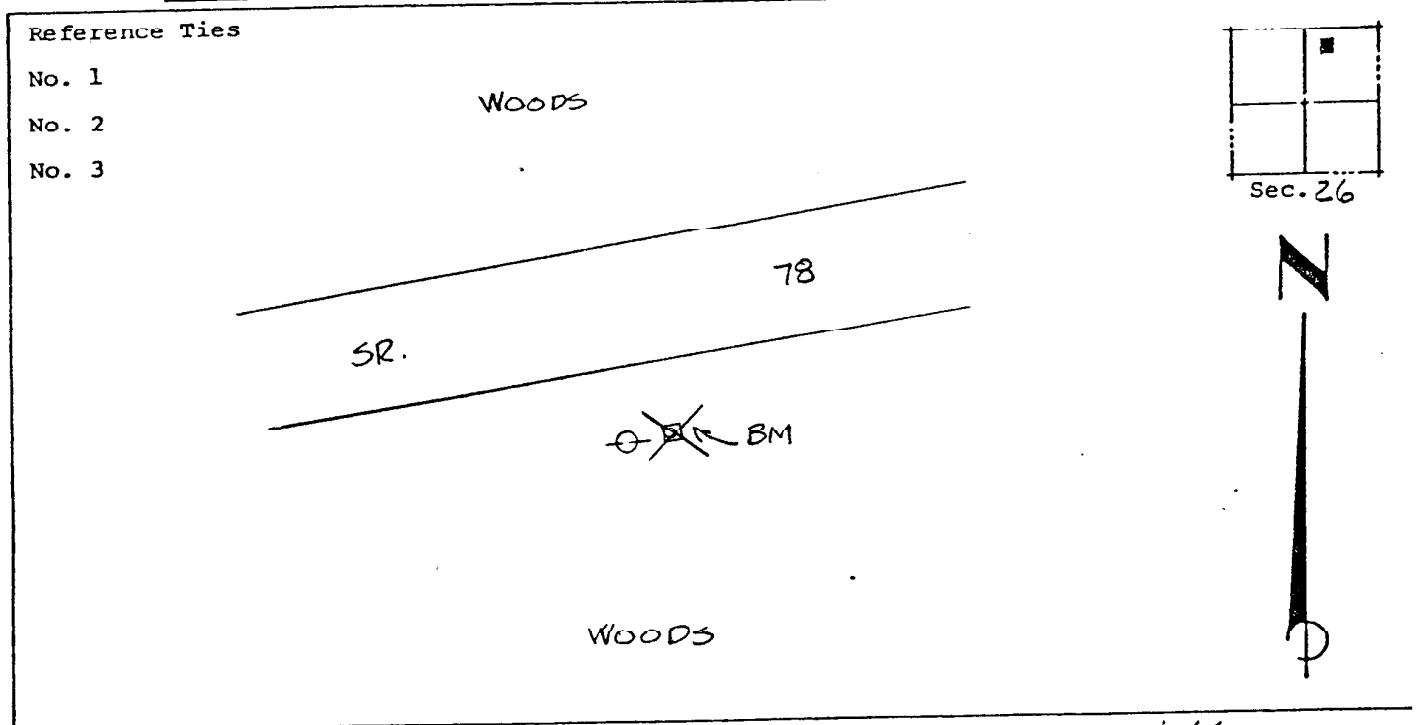
3rd Order

State and Zone Florida, Mercator West

Reference Bearings to Station or Object:

Description	Bearing	Distance

Field Book _____ Page _____ Sketch by B.R. HOMOLA



VERTICAL CONTROL originated on 1st order control established by USCGS agency

in 1966, on National Geodetic Survey Datum of 1929 datum.

Elevation 2.717, 3rd Order Level Book V4 Page 41
(feet)