



Deni Associates

7025 N.W. 4th St. - Plantation, Florida 33317

LEE COUNTY, FLORIDA AERIAL MAPPING PROJECT

MAPPING BY
HAMRICK AERIAL SURVEYS, INC.
CLEARWATER, FLORIDA

Marker Designation BM A240 (USC&GS) County LEE State FL
Located in sec. 24 Twp. 44S Rge. 22E U.S.G.S. Quad Map MATLACHA 7.5min

To reach point from _____
MARKER IS NEAR THE INT. OF SR. 78 & ISLAND AVE. IN MATLACHA

Type of Marker BRASS CAP (BENT UP) ON IRON ROD, 0.1 BLW. GRD Date ^{RECOVERED} MAY 19 81

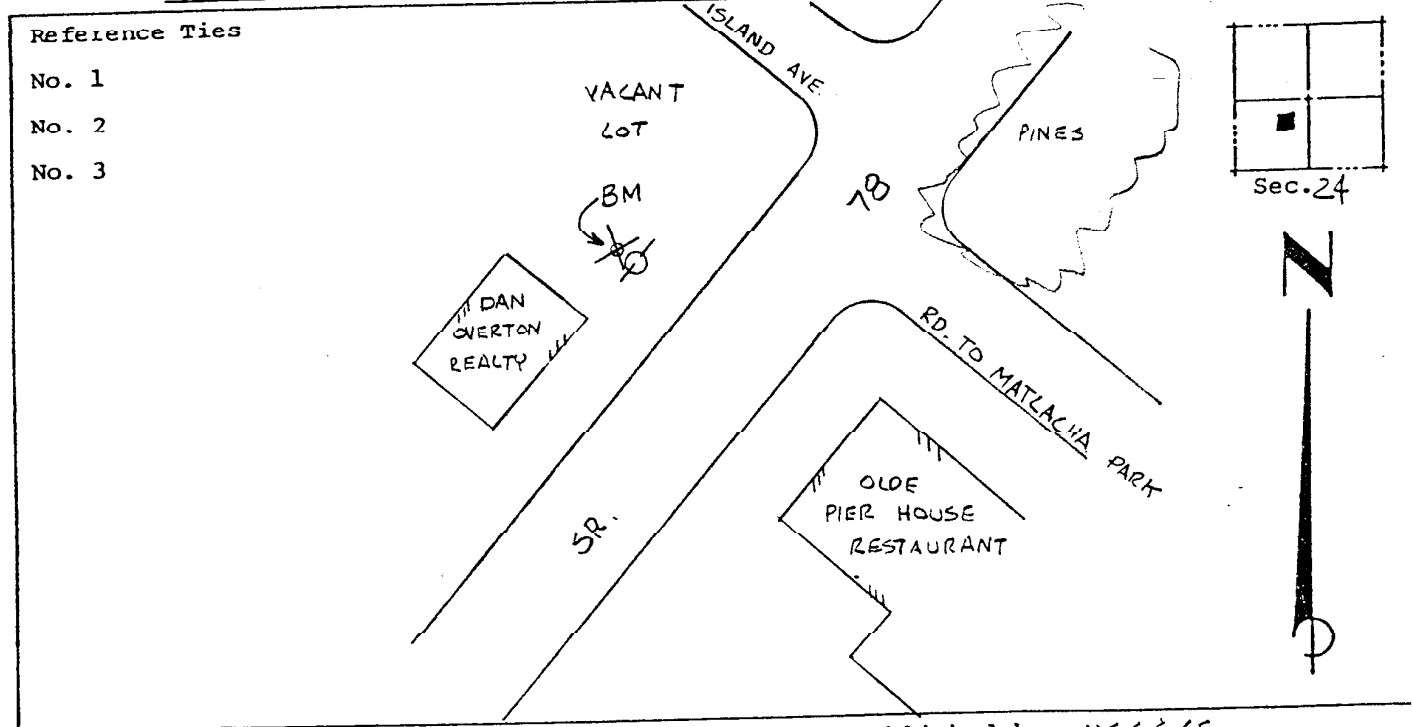
HORIZONTAL CONTROL originated on _____ order control established by _____ agency
in _____, on _____ North American 1927 _____ datum.

Coordinates: North (y) _____ East (x) _____
(feet) _____

Reference Bearings to Station or Object: _____
State and Zone Florida, Mercator West

Description	Bearing	Distance

Field Book _____ Page _____ Sketch by B.R. HDMOLA



VERTICAL CONTROL originated on 1st order control established by USC&GS agency
in 1966, on National Geodetic Survey Datum of 1929 datum.
Elevation 4.255, 3rd Order Level Book V4 Page 42
(feet)