



Deni Associates

7025 N.W. 4th St. - Plantation, Florida 33317

LEE COUNTY, FLORIDA AERIAL MAPPING PROJECT

MAPPING BY
HAMRICK AERIAL SURVEYS, INC.
CLEARWATER, FLORIDA

Marker Designation USC & GS J 241 County LEE State FL

Located in Sec. 17 Twp. 44S Rge. 22E U.S.G.S. Quad Map BOKEELIA 7.5min.

To reach point from INT. SR 767 & PINELAND RD. IN SEC 8-44S-22E :
GO SE 0.7 MI ± TO VALERIA RD & MARKER.

Type of Marker STD. BRASS DISK SET IN CONC. Date ^{RELEASED} MAY 19 81

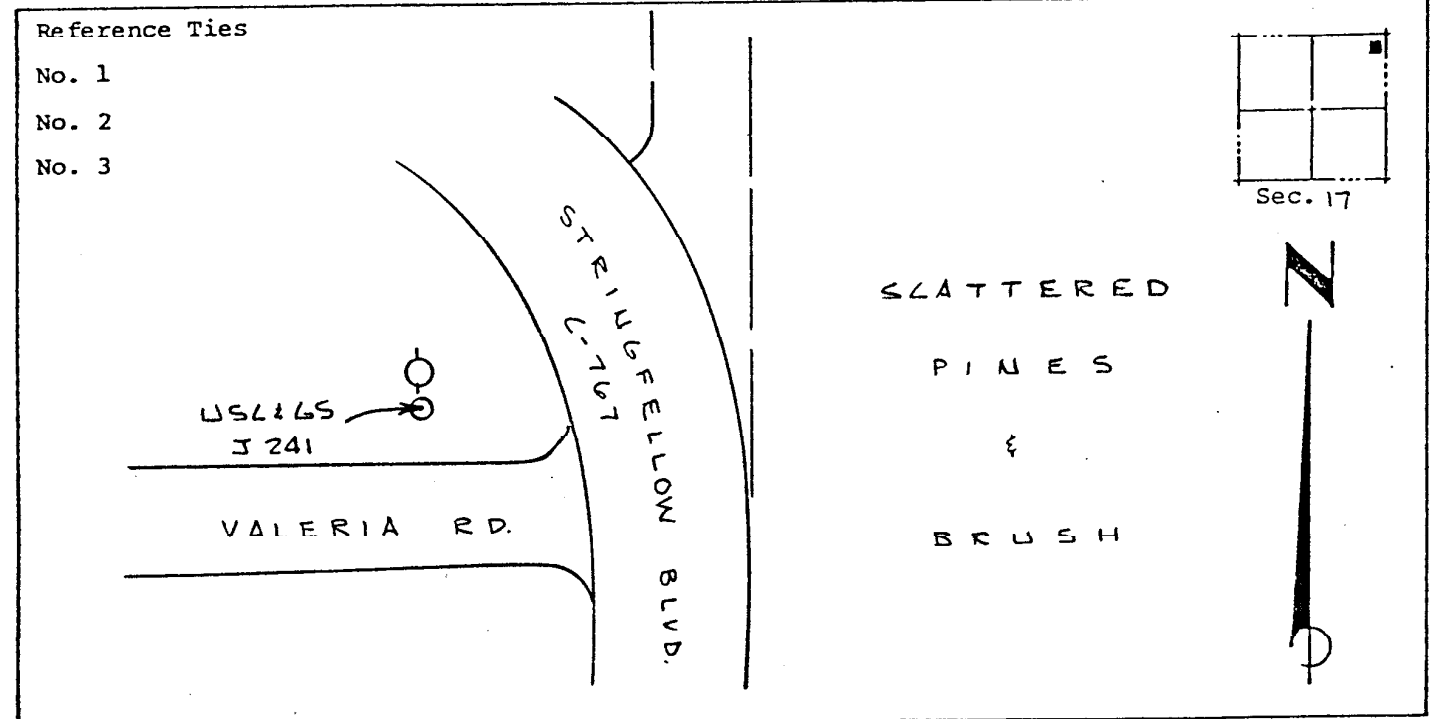
HORIZONTAL CONTROL originated on _____ order control established by _____
in _____, on North American 1927 datum. _____ agency

Coordinates: North (y) _____ East (x) _____
(feet) 3rd Order State and Zone Florida, Mercator West

Reference Bearings to Station or Object:

| Description | Bearing | Distance |
|-------------|---------|----------|
| | | |
| | | |

Field Book _____ Page _____ Sketch by A. LETHEBY



VERTICAL CONTROL originated on 1st order control established by USC & GS agency

in 1966, on National Geodetic Survey Datum of 1929 datum.

Elevation 11.467, 3rd Order Level Book V5 Page 17
(feet)