



Deni Associates

7025 N.W. 4th St. • Plantation, Florida 33317

LEE COUNTY, FLORIDA AERIAL MAPPING PROJEC

MAPPING BY
HAMRICK AERIAL SURVEYS, INC.
CLEARWATER, FLORIDA

Marker Designation USC & GS L-240 County LEE State FL

Located in Sec. 7 Twp. 44S Rge. 22E U.S.G.S. Quad Map BOKEFLIA 7.5min

To reach point from INT SR 767 & PINELAND RD. IN SEC 8-44S-22E:
GO W 1/2 MI ± ALONG 1.0 MI ± OF STRAIGHT DUE W. & 0.5 MI ± OF
WINDING ROAD TO BAY & MARKER.

Type of Marker STD BRASS DISC SET ON STEEL POD Date RECOVERED MAY 19 81

HORIZONTAL CONTROL originated on _____ order control established by _____

in _____, on _____ North American 1927 _____ datum. _____ agency

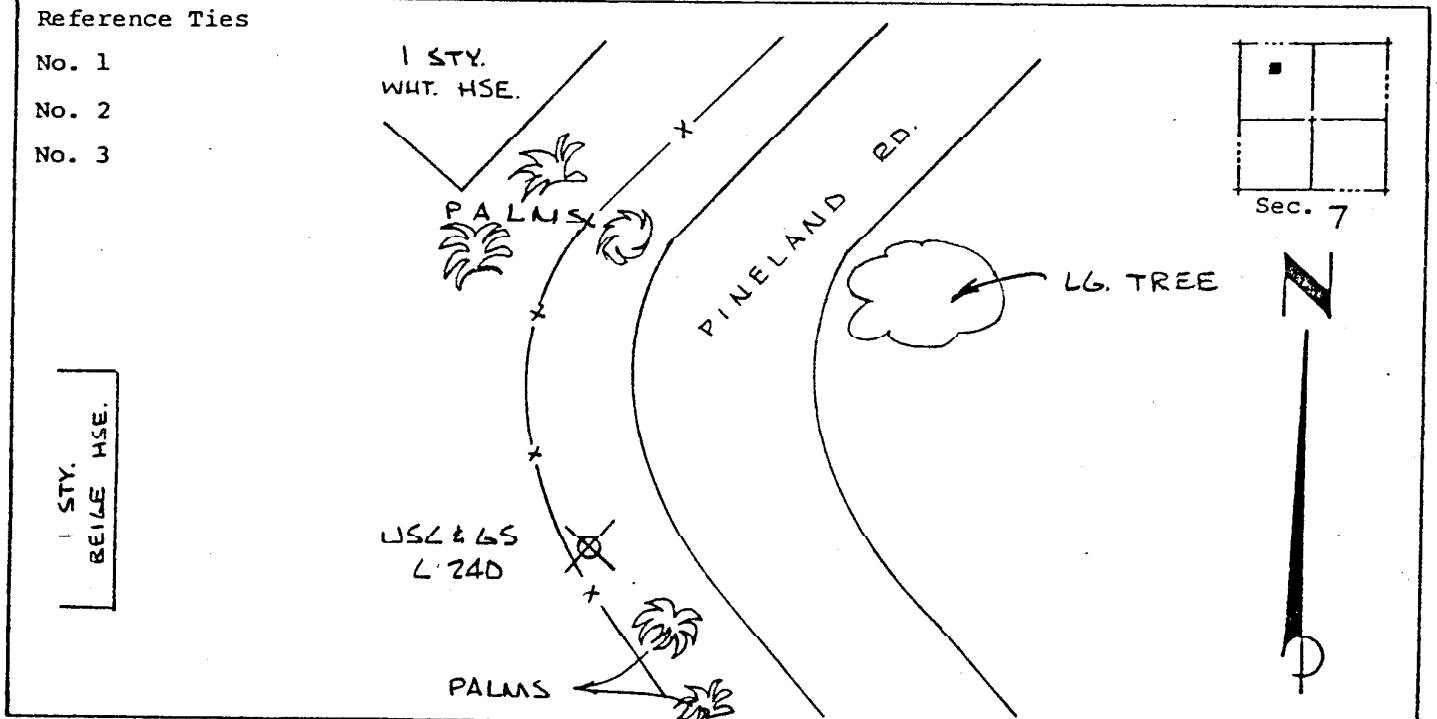
Coordinates: North (y) _____ East (x) _____
(feet)

3rd Order State and Zone Florida, Mercator West

Reference Bearings to Station or Object:

Description	Bearing	Distance

Field Book _____ Page _____ Sketch by A. LETHESY



VERTICAL CONTROL originated on 1st order control established by USC & GS agency

in 1966, on National Geodetic Survey Datum of 1929 datum.
year

Elevation 3.386, 3rd Order Level Book V5 Page 1
(feet)