



Feni Associates
7025 N.W. 4th St. - Plantation, Florida 33317

LEE COUNTY, FLORIDA
U.S.D.A SOIL CONSERVATION SERVICE
MAPPING BY
HAMRICK AERIAL SURVEYS, INC.
CLEARWATER, FLORIDA

Marker Designation SCS-48 & TBM County LEE State FL
Located in Sec. 4 Twp. 43 S. Rge. 24 E U.S.G.S. Quad Map GILCHRIST 7.5min.

To reach point from INT. OF US 41 / CLEVELAND AV AND SR 78 /
BAVSHOFF RD / 60 N. 6.0 MI ± TO DIRT RD. - E ;
TRIFUCE E. 0.8 MI ± TO POINT.

Type of Marker 2" LEE CO. DISC, 0.8' BLW. GRD. Date set NOV. - DEC. 19 80
HORIZONTAL CONTROL originated on 2ND order control established by FLA. DOT
agency

in 1980 year, on North American 1927 datum.

Coordinates: North (y) 883,309.045 East (x) 527,642.148
(feet)

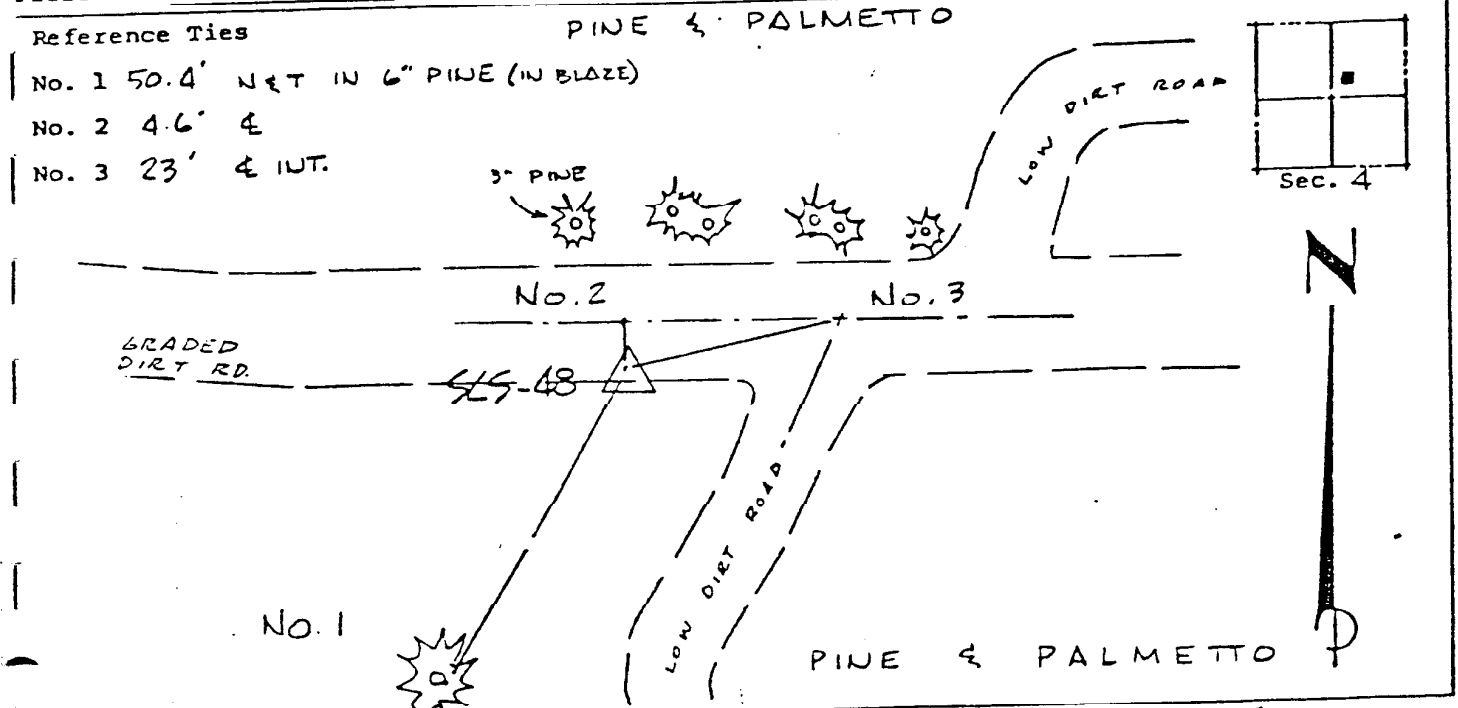
3rd Order

State and Zone Florida, Mercator West

Reference Bearings to Station or Object:

Description	Bearing	Distance
<u>SCS-47</u>	<u>S 89° 52' 40.2" W</u>	<u>4709.213</u>
<u>SCS-49</u>	<u>N 89° 42' 46.2" E</u>	<u>4787.694</u>

Field Book 1 Page 55 Sketch by D.W. ALBERTSEN



VERTICAL CONTROL originated on 1ST order control established by USC & GS
agency

in 1966 year, on National Geodetic Survey Datum of 1929 datum.

elevation 22.24, 3rd Order Level Book 3 Page 47