



Deni Associates

7025 N.W. 4th St. - Plantation, Florida 33317

LEE COUNTY, FLORIDA
AERIAL MAPPING PROJECT

MAPPING BY
HAMRICK AERIAL SURVEYS, INC.
CLEARWATER, FLORIDA

Marker Designation TBM DISV-15 County LEE State FL

Located in Sec. 16 Twp. 14S Rge. 22E U.S.G.S. Quad Map MATLACHA 7.5min.

To reach point from INT. SR 78 & SR 767 IN PINE ISLAND CENTER :
GO N. 2.1 MI ± TO CUBLES RD. ; THENCE E. 0.45 MI ± TO
EAGLES NEST DR. & MARKER.

Type of Marker 4 1/2" ON E END CONC. CULV. Date set MAY 19 81

HORIZONTAL CONTROL originated on _____ order control established by _____

in _____, on _____ North American 1927 _____ datum. _____ agency

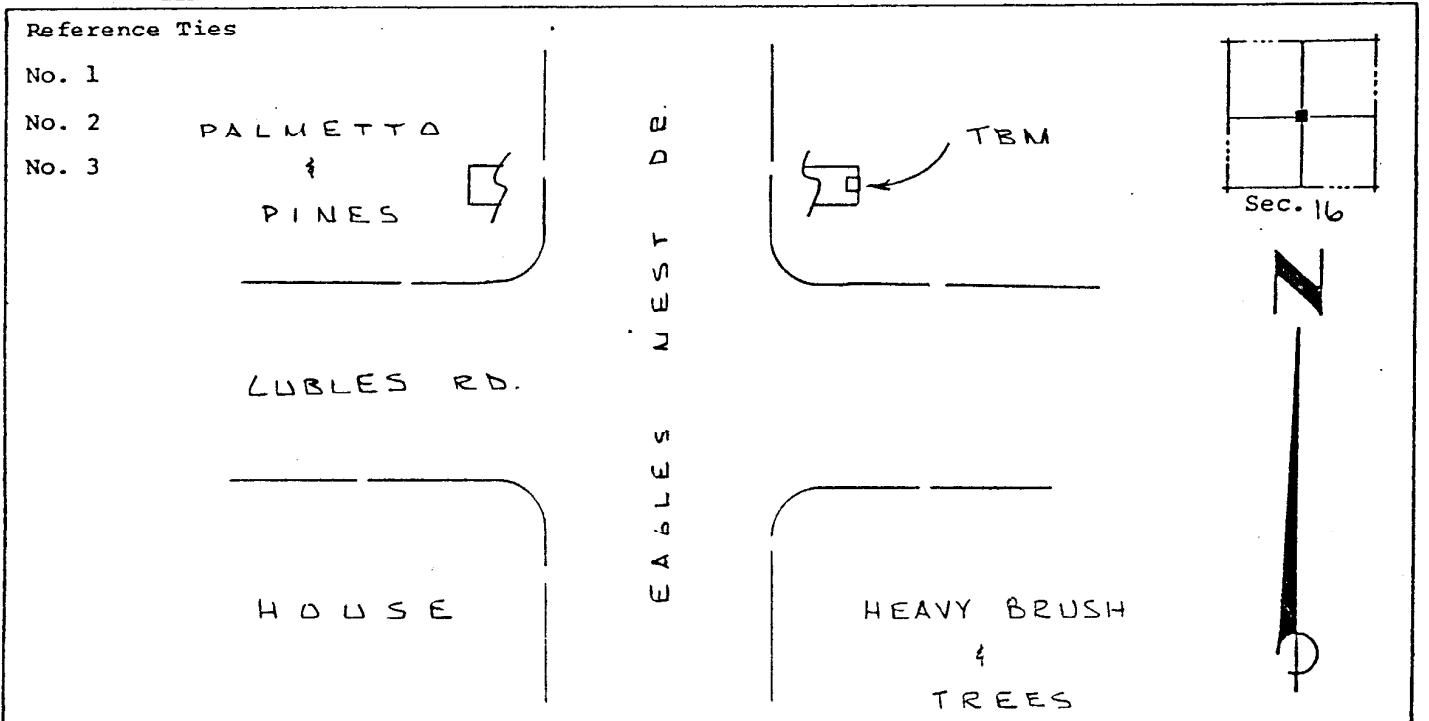
Coordinates: North (y) _____ East (x) _____
(feet)

3rd Order State and Zone Florida, Mercator West

Reference Bearings to Station or Object:

Description	Bearing	Distance

Field Book _____ Page _____ Sketch by A. LETHBY



VERTICAL CONTROL originated on 1st order control established by USC & GS agency

in 1966, on _____ National Geodetic Survey Datum of 1929 _____ datum.

Elevation 05.40, 3rd Order Level Book Y5 Page 24
(feet)