



Deni Associates

7025 N.W. 4th St. - Plantation, Florida 33317

LEE COUNTY, FLORIDA  
AERIAL MAPPING PROJECT

MAPPING BY  
HAMRICK AERIAL SURVEYS, INC.  
CLEARWATER, FLORIDA

Marker Designation TBM PISV-20 County LEE State FL

Located in Sec. 31 TWP. 43S Rye. 22E U.S.C.S. Quad Map BOKEFLIA 7.5min

To reach point from INT SR 767 & PINELAND RD. SEC 8-44S-22E :  
GO NW. 2.4 MI ± TO HOWARD RD. & MARKER.

Type of Marker CH. D" ON S. END OF LONG. LULV. Date set MAY 19 81

HORIZONTAL CONTROL originated on \_\_\_\_\_ order control established by \_\_\_\_\_ agency  
in \_\_\_\_\_ year, on \_\_\_\_\_ North American 1927 datum.

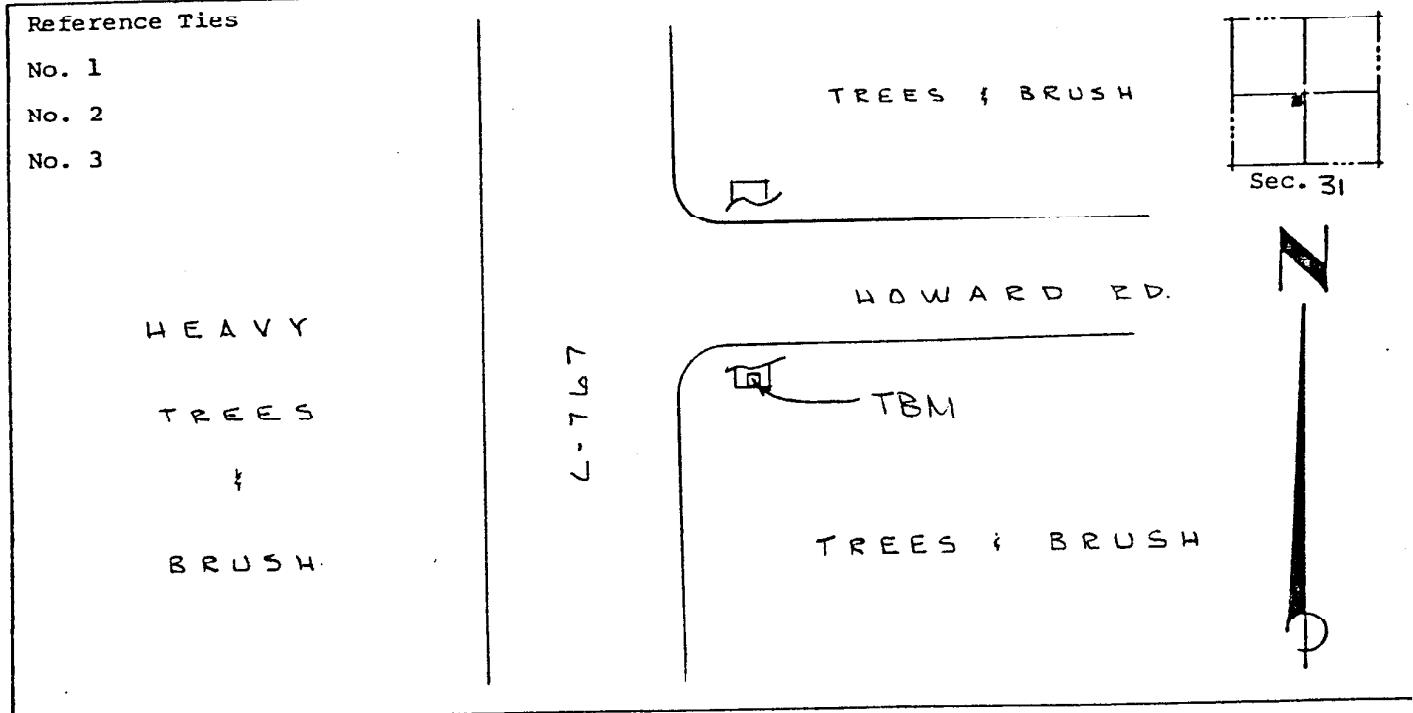
Coordinates: North (y) \_\_\_\_\_ East (x) \_\_\_\_\_  
(feet)

3rd Order State and Zone Florida, Mercator West

Reference Bearings to Station or Object:

Description	Bearing	Distance

Field Book \_\_\_\_\_ Page \_\_\_\_\_ Sketch by A. LETHEBY



VERTICAL CONTROL originated on 1st order control established by USC & GS agency

in 1966 year, on National Geodetic Survey Datum of 1929 datum.

Elevation 05.61 (feet), 3rd Order Level Book V5 Page 14