



Deni Associates

FORT MYERS, FLORIDA

LEE COUNTY, FLORIDA
AERIAL MAPPING PROJECT
MAPPING BY: HAMRICK AERIAL SURVEYS, INC.
CLEARWATER, FLORIDA

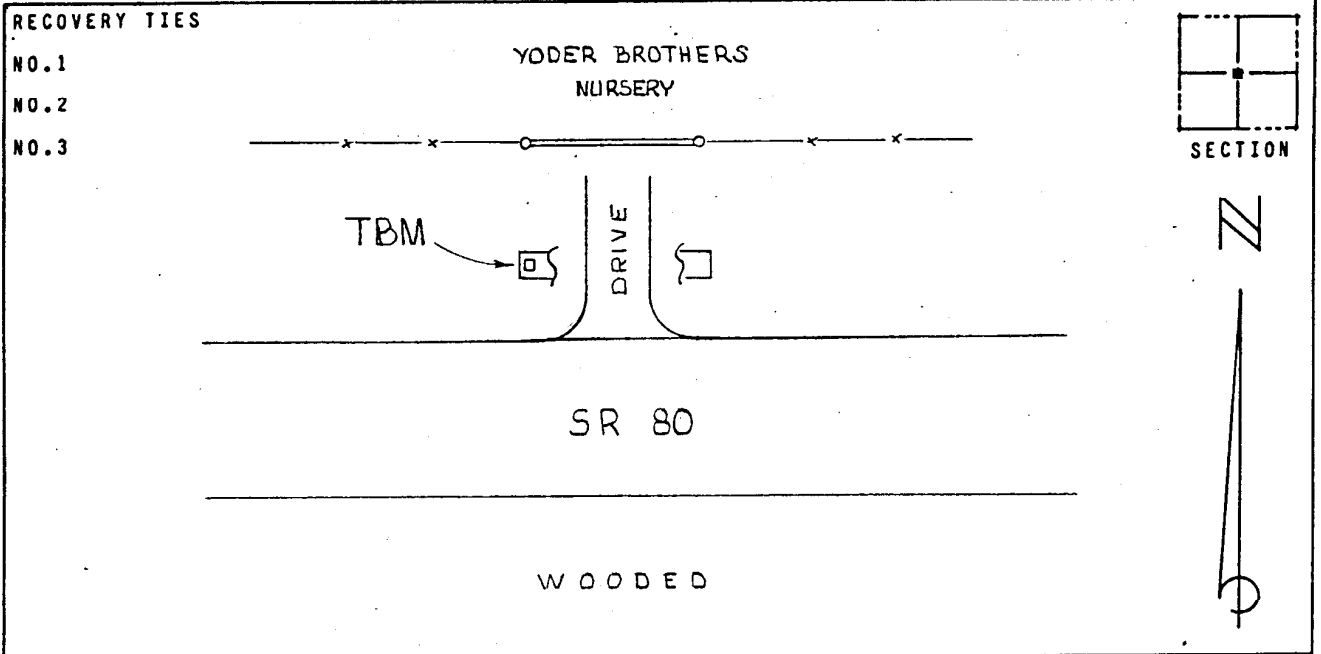
DESIGNATION TBM 16-59 COUNTY LEE STATE FL
LOCATED IN SEC 26 TWP 43 S. RGE 27 E USGS QUAD MAP ALVA 7.5 MIN.
TO REACH SURVEY MARK FROM INT. S.R. 80 + BROADWAY IN ALVA: GO E.
ON S.R. 80 ±1.2 MI TO MARK.

TYPE OF MARK CH "□" W. END OF ROUND CONC. CULVERT DATE SET MAY 1985
HORIZONTAL CONTROL ORIGINATED ON _____ ORDER CONTROL ESTABLISHED BY _____
IN _____, ON NORTH AMERICAN DATUM OF 1927.
COORDINATES (FT) NORTH (Y) _____ EAST (X) _____
3RD ORDER STATE AND ZONE FLORIDA, MERCATOR WEST

REFERENCE BEARINGS TO STATION OR OBJECT

DESCRIPTION	BEARING	DISTANCE
_____	_____	_____
_____	_____	_____
_____	_____	_____

FIELD BOOK _____ PAGE _____ SKETCH BY EVS



VERTICAL CONTROL ORIGINATED ON 1ST ORDER CONTROL ESTABLISHED BY USC + GS
IN 1966, ON NATIONAL GEODETIC SURVEY DATUM OF 1929.

ELEVATION (FT) 14.00 3RD ORDER LEVEL BOOK 16 PAGE 59