

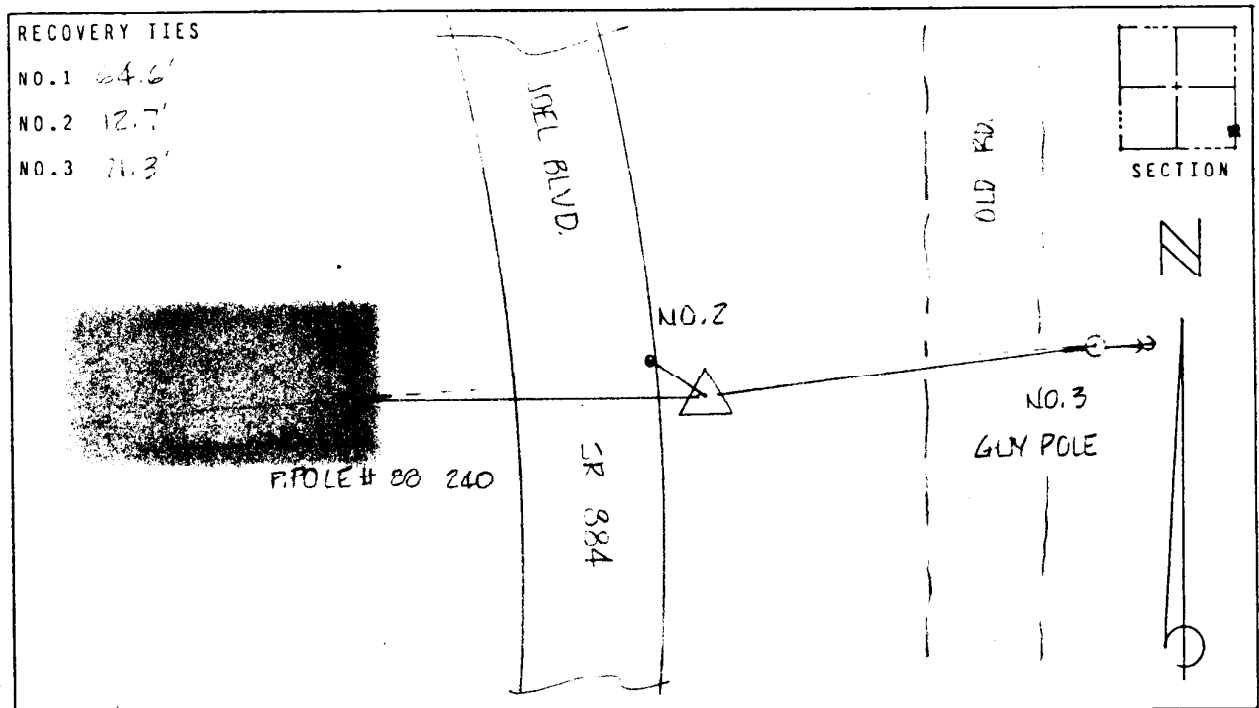
LEE COUNTY, FLORIDA  
AERIAL MAPPING PROJECT

MAPPING BY:  
WOOLPERT CONSULTANTS

DESIGNATION 144-44 COUNTY LEE STATE FL  
LOCATED IN SEC 36 TWP 43 S. RGE 7 E. USGS QUAD MAP ALVA  
TO REACH SURVEY MARK FROM INT OF SR 80 & SR 334 (JOEL BLVD)  
THENCE SOUTHERLY FOR 1.5 MILES TO MARK.

TYPE OF CONCRETE CAP ON REBAR  
MARK 3 300 882 DATE SET JULY 1988  
HORIZONTAL CONTROL ORIGINATED ON 2ND ORDER CONTROL BY N.G.S. AND F.D.O.T.  
ON NORTH AMERICAN DATUM OF 1927 (1927 ADJ) ON NORTH AMERICAN DATUM OF 1983  
COORDINATES (FT) COORDINATES (FT)  
NORTHING (Y) 852,100.835 NORTHING (Y) \_\_\_\_\_  
EASTING (X) 670,977.453 EASTING (X) \_\_\_\_\_  
3RD ORDER COORDINATES STATE AND ZONE FLORIDA, MERCATOR WEST

FIELD BOOK H-3 PAGE 51 SKETCH BY DSW



VERTICAL CONTROL ORIGINATED ON 2ND ORDER CONTROL ESTABLISHED BY N.G.S. AND F.D.O.T.  
ON NATIONAL GEODETIC VERTICAL DATUM OF 1929  
ELEVATION (FT) 13.71 , 3RD ORDER LEVEL BOOK V 18 PAGE 12