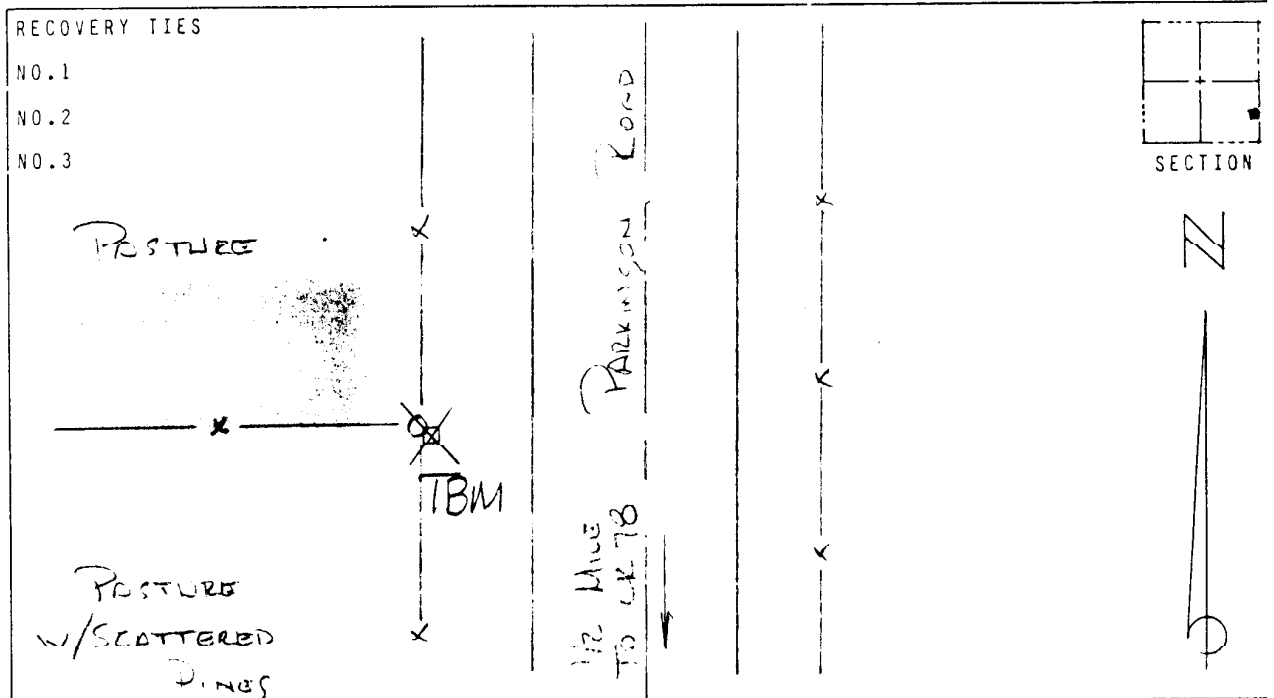


LEE COUNTY, FLORIDA  
 AERIAL MAPPING PROJECT  
 MAPPING BY:  
 WOOLPERT CONSULTANTS

DESIGNATION TBM 17-64 COUNTY LEE STATE FL  
 LOCATED IN SEC 16 TWP 43 S. RGE 27 E. USGS QUAD MAP ALVA  
 TO REACH SURVEY MARK FROM CR 78 & PARKINSON ROAD, NORTHWEST  
OF ALVA; THENCE NORTHERLY FOR 0.6 MILES TO AN  
EAST-WEST FENCELINE & MARK ON WEST R/W LINE.

TYPE OF CONCRETE SURVEY POST 3"x3"  
 MARK \_\_\_\_\_ DATE SET JULY 1988  
 HORIZONTAL CONTROL ORIGINATED ON 2ND ORDER CONTROL BY N.G.S. AND F.D.O.T.  
 ON NORTH AMERICAN DATUM OF 1927 (1927 ADJ) ON NORTH AMERICAN DATUM OF 1983  
 COORDINATES (FT) COORDINATES (FT)  
 NORTHING (Y) \_\_\_\_\_ NORTHING (Y) \_\_\_\_\_  
 EASTING (X) \_\_\_\_\_ EASTING (X) \_\_\_\_\_  
3RD ORDER COORDINATES STATE AND ZONE FLORIDA, MERCATOR WEST

FIELD BOOK \_\_\_\_\_ PAGE \_\_\_\_\_ SKETCH BY RLW



VERTICAL CONTROL ORIGINATED ON 2ND ORDER CONTROL ESTABLISHED BY N.G.S. AND F.D.O.T.  
 ON NATIONAL GEODETIC VERTICAL DATUM OF 1929  
 ELEVATION (FT) 17.26 , 3RD ORDER LEVEL BOOK V 17 PAGE 64