



Dani Associates

7025 N.W. 4th St. - Plantation, Florida 33317

LEE COUNTY, FLORIDA
U.S.D.A. SOIL CONSERVATION SERVICE

MAPPING BY

HARRICK AERIAL SURVEYS, INC.
CLEARWATER, FLORIDA

Marker Designation SCS-49 & TBM County LEE State FL
Located in Sec. 3 Twp. 43 S Rge. 24 E U.S.G.S. Quad Map GILCHRIST 7.5min

To reach point from INT OF US 41 / CLEVELAND AV AND SR 78 /
BAYSHORE RD: GO N. 6.0 MI ± TO DIRT RD - E.;
THENCE E. 1.7 MI ± TO POINT.

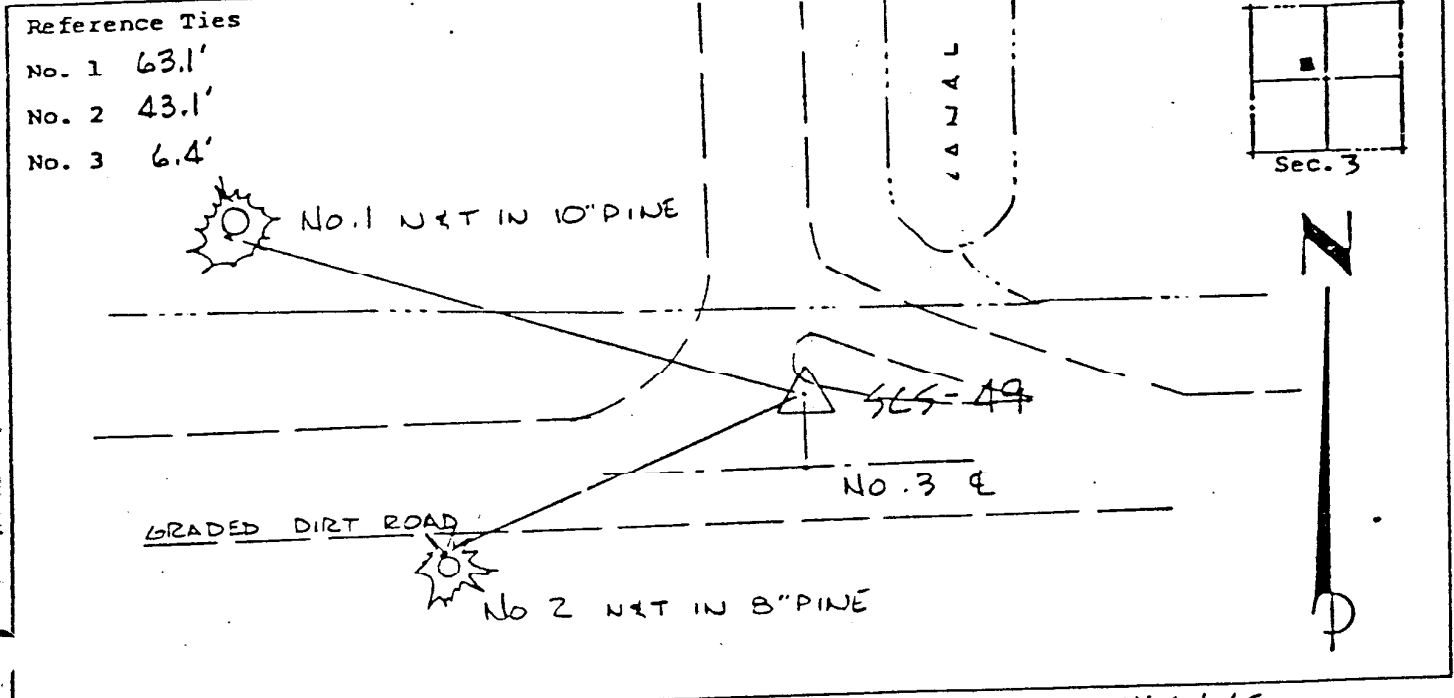
Type of Marker 2" LEE CO. DISK, 0.8' BLW. GRD. Date set NOV. - DEC. 19 80
HORIZONTAL CONTROL originated on 2ND order control established by FLA DOT agency

in 1969, on North American 1927 datum.
Coordinates: North (y) 883,333.041 East (x) 532,429.782
(feet) 3rd Order State and Zone Florida, Mercator West

Reference Bearings to Station or Object:

Description	Bearing	Distance
<u>SCS-48</u>	<u>S 89° 42' 46.2" W</u>	<u>4787.694</u>
<u>SCS-50</u>	<u>S 89° 59' 05.8" E</u>	<u>2592.394</u>

Field Book 1 Page 56 Sketch by D.W. ALBERTSEN



VERTICAL CONTROL originated on 1ST order control established by USGS & GS agency

in 1966, on National Geodetic Survey Datum of 1929 datum.
Elevation 22.76, 3rd Order Level Book 3 Page 47