



Deni Associates

7025 N.W. 4th St. - Plantation, Florida 33317

LEE COUNTY, FLORIDA AERIAL MAPPING PROJECT

MAPPING BY
HAMRICK AERIAL SURVEYS, INC.
CLEARWATER, FLORIDA

Marker Designation TBM P15V-21 County LEE State FL

Located in Sec. 30 Twp. 43S Rge. 22E U.S.G.S. Quad Map BOKEELIA 7.5min

To reach point from INT SR 767 & PINELAND RD. SEC 8-44S-22E:
GO N.W. 3.3 MI ± TO QUAIL TR. & MARKER.

Type of Marker 4 1/2" ON N. END OF CONC. CULV. Date set MAY 19 81

HORIZONTAL CONTROL originated on _____ order control established by _____ agency

in _____, on North American 1927 datum.

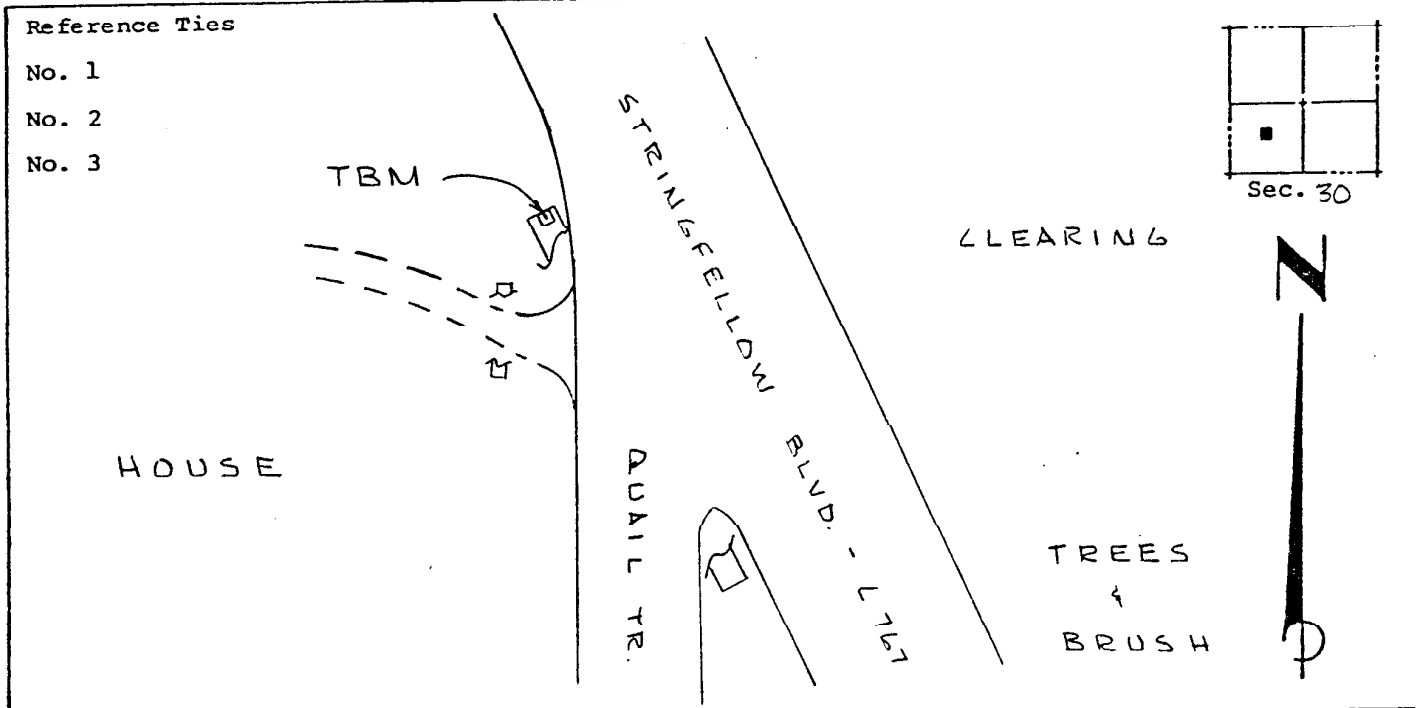
Coordinates: North (y) _____ East (x) _____
(feet)

3rd Order State and Zone Florida, Mercator West

Reference Bearings to Station or Object:

| Description | Bearing | Distance |
|-------------|---------|----------|
| | | |
| | | |

Field Book _____ Page _____ Sketch by A LETHBY



VERTICAL CONTROL originated on 1st order control established by USC & GS agency

in 1966, on National Geodetic Survey Datum of 1929 datum.

Elevation 03.25, 3rd Order Level Book V5 Page 29
(feet)