



Deni Associates  
FORT MYERS, FLORIDA

LEE COUNTY, FLORIDA  
AERIAL MAPPING PROJECT

MAPPING BY:  
WOOLPERT CONSULTANTS

DESIGNATION TBM 17-56 COUNTY LEE STATE FL

LOCATED IN SEC 2 TWP 43 S. RGE 27 E. USGS QUAD MAP TELEGRAPH SWAMP SE  
TO REACH SURVEY MARK FROM CR 78 & LEE/HENDRY CO. LINE; THENCE  
W. FOR 0.6 MI. ± TO GROVE ENTR. RD.; THENCE FOLLOWING  
GROVE RD. 0.8 MI. ± - N.; 0.3 MI. ± - W.; 2.0 MI. ± - N.;  
1.0 MI. ± W. TO A CANAL CROSSING & MARK.

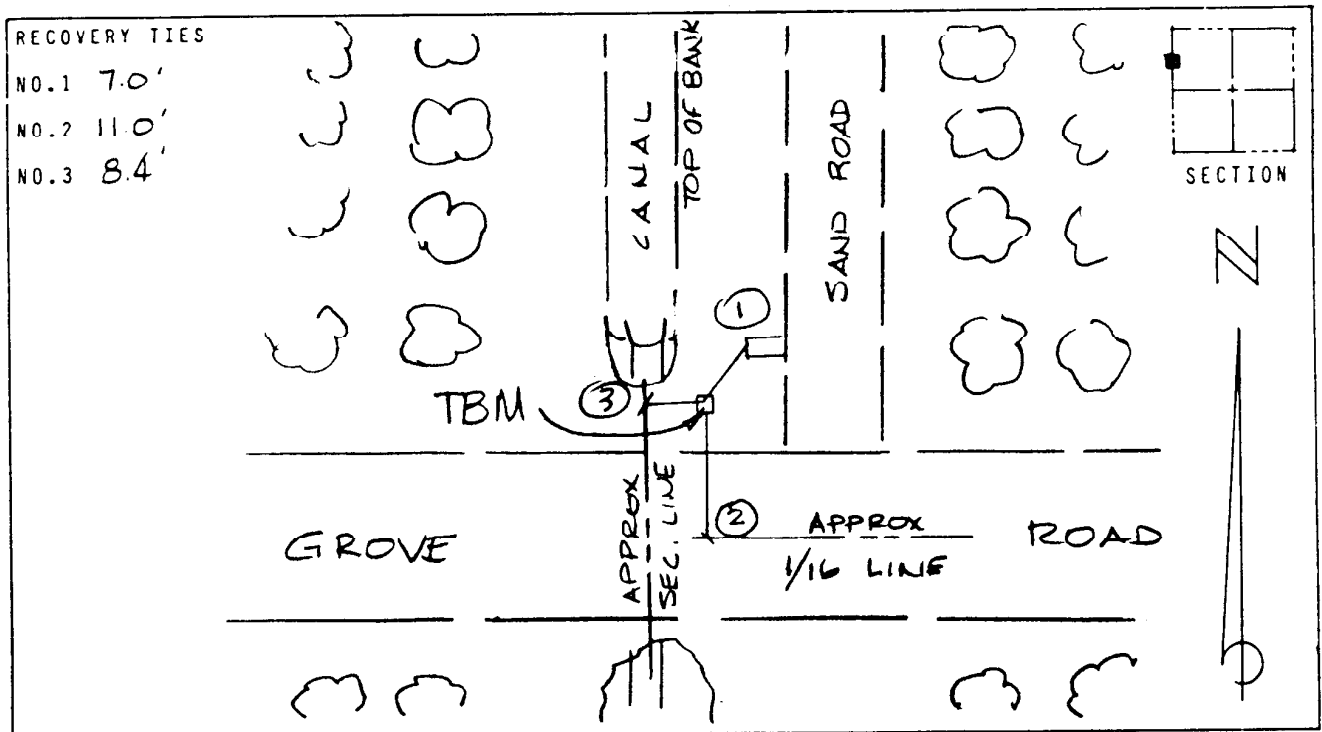
TYPE OF LEE CO. ALUM. CAP ON 5/8" REBAR, 0.4' BLW. SURFACE  
MARK \_\_\_\_\_ DATE SET SEPT. 19 88

HORIZONTAL CONTROL ORIGINATED ON 2ND ORDER CONTROL BY N.G.S. AND F.D.O.T.  
ON NORTH AMERICAN DATUM OF 1927 (1927 ADJ) ON NORTH AMERICAN DATUM OF 1983  
COORDINATES (FT) COORDINATES (FT)

NORTHING (Y) \_\_\_\_\_ NORTHING (Y) \_\_\_\_\_  
EASTING (X) \_\_\_\_\_ EASTING (X) \_\_\_\_\_

3RD ORDER COORDINATES STATE AND ZONE FLORIDA, MERCATOR WEST

FIELD BOOK \_\_\_\_\_ PAGE \_\_\_\_\_ SKETCH BY RLW



VERTICAL CONTROL ORIGINATED ON 2ND ORDER CONTROL ESTABLISHED BY N.G.S. AND F.D.O.T.  
ON NATIONAL GEODETIC VERTICAL DATUM OF 1929

ELEVATION (FT) 21.35, 3RD ORDER LEVEL BOOK V 17 PAGE 56