



Deni Associates
FORT MYERS, FLORIDA

LEE COUNTY, FLORIDA
AERIAL MAPPING PROJECT

MAPPING BY:
WOOLPERT CONSULTANTS

DESIGNATION LH 62 & TBM COUNTY LEE STATE FL

LOCATED IN SEC 1 TWP 43 S RGE 27 E USGS QUAD MAP TELEGRAPH SWAMP SE
TO REACH SURVEY MARK FROM CR 78 & LEE/HENDRY COLLINS; THENCE N 1/4
0.6 MILES TO GROVE ENT; THENCE N 1/4 0.75 MILES TO T INT;
THENCE N 1/4 0.3 MILES TO T INT; THENCE N 1/4 1.5 MILES
TO GROVE ROAD AND MARK.

TYPE OF 2" ALUM. LAP ON RE-BAR

MARK 2" BLK. GRD. DATE SET JULY 1988

HORIZONTAL CONTROL ORIGINATED ON 2ND ORDER CONTROL BY N.G.S. AND F.D.O.T.

ON NORTH AMERICAN DATUM OF 1927 (1927 ADJ) ON NORTH AMERICAN DATUM OF 1983

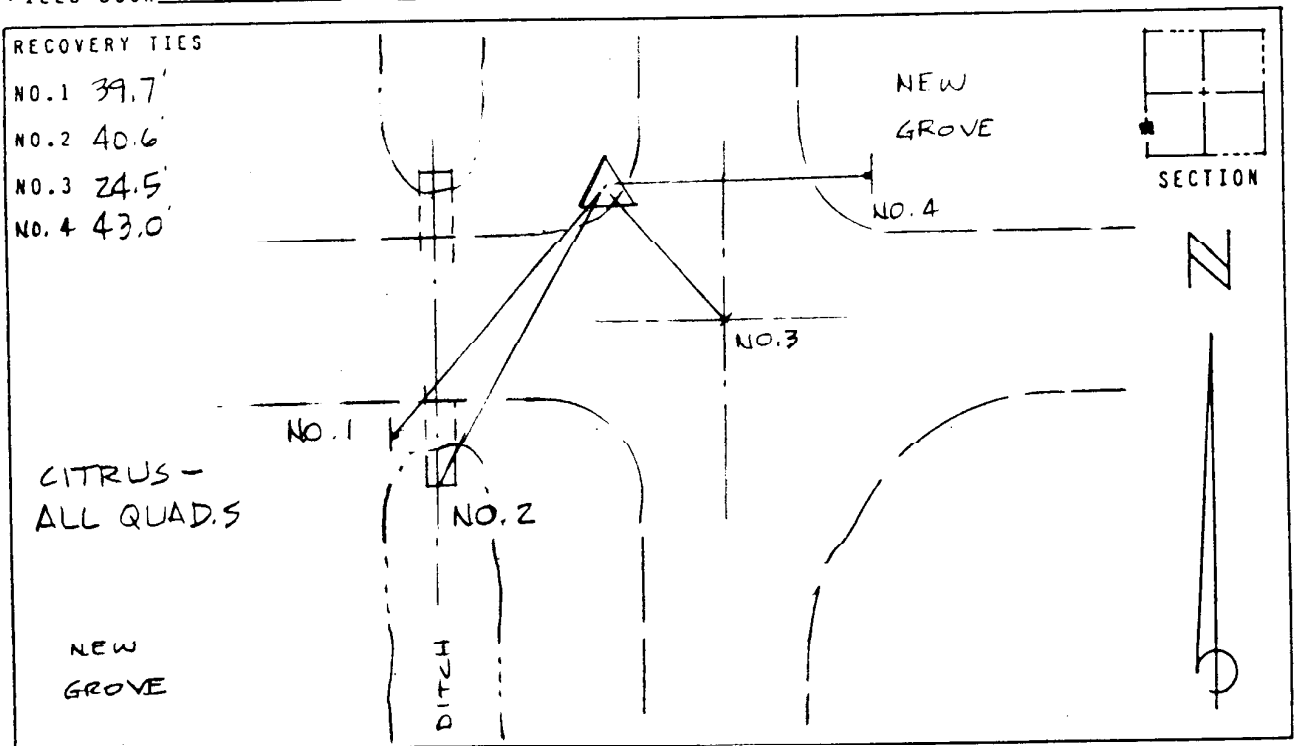
COORDINATES (FT) COORDINATES (FT)

NORTHING (Y) 881,889.636 NORTHING (Y) _____

EASTING (X) 636,252.370 EASTING (X) _____

3RD ORDER COORDINATES STATE AND ZONE FLORIDA, MERCATOR WEST

FIELD BOOK H-9 PAGE 1 SKETCH BY DSW



VERTICAL CONTROL ORIGINATED ON 2ND ORDER CONTROL ESTABLISHED BY N.G.S. AND F.D.O.T.

ON NATIONAL GEODETIC VERTICAL DATUM OF 1929

ELEVATION (FT): 22.50 . 3RD ORDER LEVEL BOOK V 17 PAGE 45