



Deni Associates  
FORT MYERS, FLORIDA

LEE COUNTY, FLORIDA  
AERIAL MAPPING PROJECT

MAPPING BY:  
WOOLPERT CONSULTANTS

DESIGNATION LH56 & TBM COUNTY LEE STATE FL

LOCATED IN SEC 12 TWP 43 S RGE 27 E USGS QUAD MAP ALVA

TO REACH SURVEY MARK FROM CR 7B & LEE/HENDRY CO LINE; THENCE  
WESTERLY 0.65 MILES TO GROVE ENT; THENCE NORTHERLY  
0.75 MILES TO T INT; THENCE EASTERLY 0.7 MILES TO  
DOWLEG TO NORTH; THENCE N'LY 0.5 MILES TO GROVE RD;  
THENCE W'LY FOR 300' ± & MARK.

TYPE OF 2" ALUM. CAP ON RE-BAR

MARK 2" BLW. GRD. DATE SET JULY 1988

HORIZONTAL CONTROL ORIGINATED ON 2ND ORDER CONTROL BY N.G.S. AND F.D.O.T.

ON NORTH AMERICAN DATUM OF 1927 (1927 ADJ) ON NORTH AMERICAN DATUM OF 1983

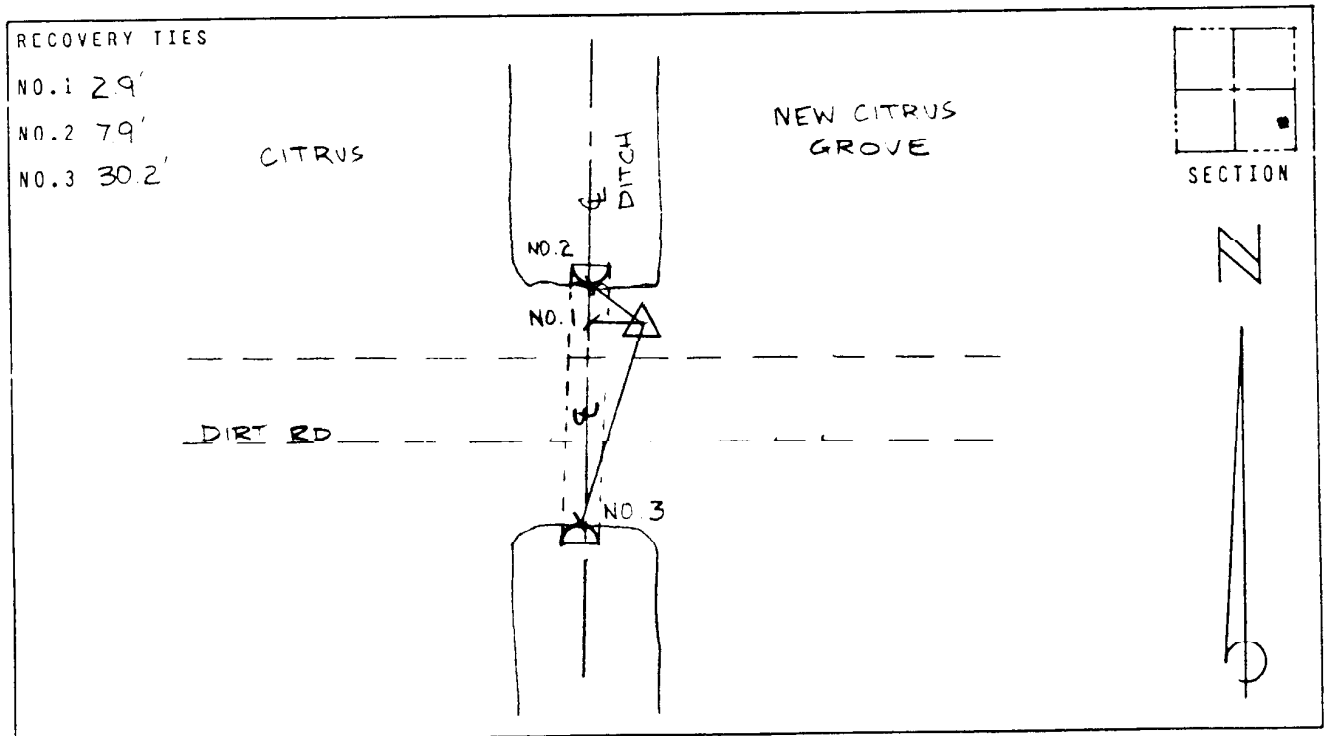
COORDINATES (FT) COORDINATES (FT)

NORTHING (Y) 876172.862 NORTHING (Y) \_\_\_\_\_

EASTING (X) 641205.120 EASTING (X) \_\_\_\_\_

3RD ORDER COORDINATES STATE AND ZONE FLORIDA, MERCATOR WEST

FIELD BOOK HB PAGE 69 SKETCH BY CHG



VERTICAL CONTROL ORIGINATED ON 2ND ORDER CONTROL ESTABLISHED BY N.G.S. AND F.D.O.T.

ON NATIONAL GEODETIC VERTICAL DATUM OF 1929

ELEVATION (FT) 20.21 , 3RD ORDER LEVEL BOOK V 17 PAGE 42