



Deni Associates  
FORT MYERS, FLORIDA

LEE COUNTY, FLORIDA  
AERIAL MAPPING PROJECT

MAPPING BY:  
WOOLPERT CONSULTANTS

DESIGNATION LH 61 & TBM COUNTY LEE STATE FL

LOCATED IN SEC 1 TWP 43 S. RGE 27 E. USGS QUAD MAP  
TO REACH SURVEY MARK FROM CB 78 & LEE/HENDRY CO LINE; THENCE N'LY 0.6  
MILES TO GROUS ENT; THENCE N'LY 0.75 MILES TO T INT; THENCE  
N'LY 0.3 MILES TO T INT NORTH; THENCE N'LY 2.0 MILES  
TO T INT & MARK.

TYPE OF 2" ALUM. CAP ON RE-BAR  
MARK 5" BLW. GRD. DATE SET JULY 1988

HORIZONTAL CONTROL ORIGINATED ON 2ND ORDER CONTROL BY N.G.S. AND F.D.O.T.  
ON NORTH AMERICAN DATUM OF 1927 (1927 ADJ) ON NORTH AMERICAN DATUM OF 1983  
COORDINATES (FT) COORDINATES (FT)

NORTHING (Y) 384112.081

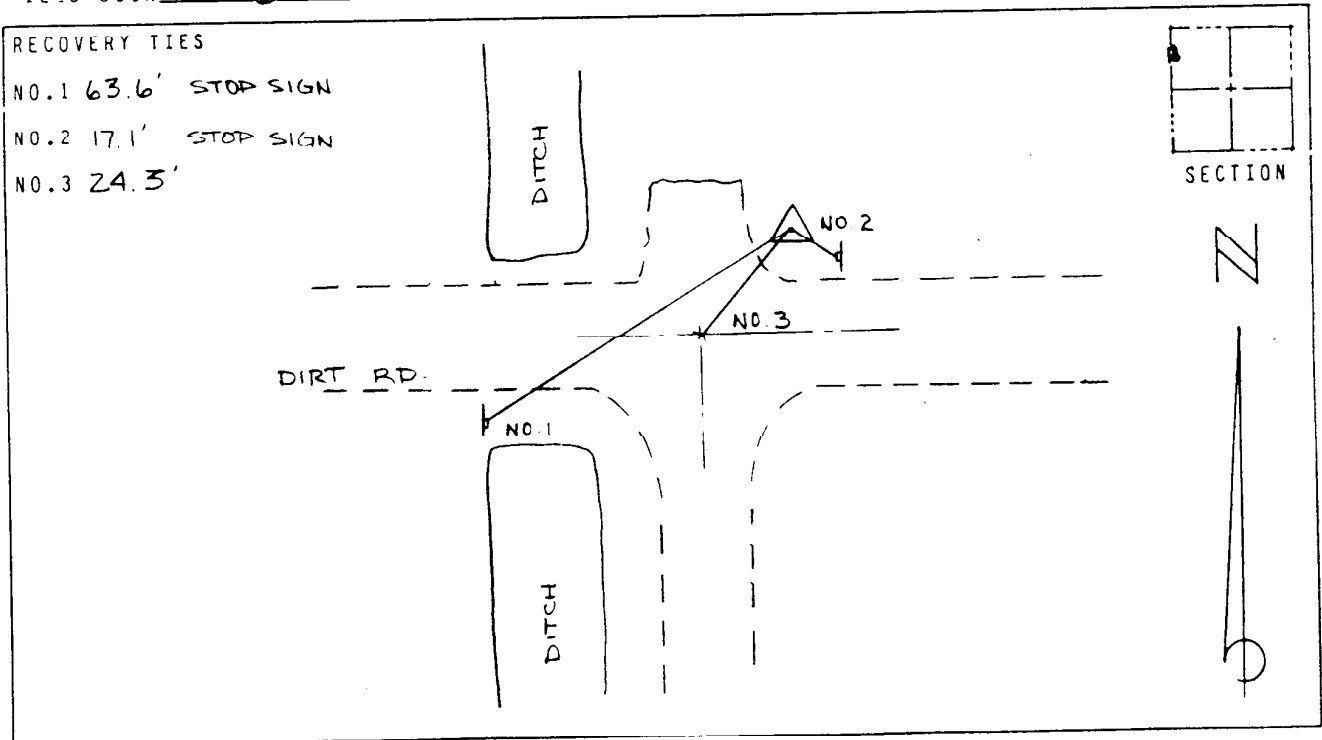
NORTHING (Y) \_\_\_\_\_

EASTING (X) 636301.717

EASTING (X) \_\_\_\_\_

3RD ORDER COORDINATES STATE AND ZONE FLORIDA, MERCATOR WEST

FIELD BOOK H-8 PAGE 75 SKETCH BY CHG



VERTICAL CONTROL ORIGINATED ON 2ND ORDER CONTROL ESTABLISHED BY N.G.S. AND F.D.O.T.  
ON NATIONAL GEODETIC VERTICAL DATUM OF 1929

ELEVATION (FT) 22.37 . 3RD ORDER LEVEL BOOK V 17 PAGE 44