



Deni Associates
FORT MYERS, FLORIDA

LEE COUNTY, FLORIDA
AERIAL MAPPING PROJECT
MAPPING BY: HAMRICK AERIAL SURVEYS, INC.
CLEARWATER, FLORIDA

DESIGNATION TBM 16-21 COUNTY LEE STATE FL
LOCATED IN SEC 31 TWP 43 S. RGE 26 E USGS QUAD MAP DLGA 7.5 MIN.

TO REACH SURVEY MARK FROM INT S.R. 80 & S.R. 31 IN SEC. 30-43-26:
GO E. ON S.R. 80 ± 0.6 MI. TO KAUNE BAUCOM RD;
THENCE S. ON KAUNE BAUCOM RD. ± 0.7 MI. TO MARK.

TYPE OF MARK CH. "□" W. END METAL CULVERT DATE SET MAY 1985

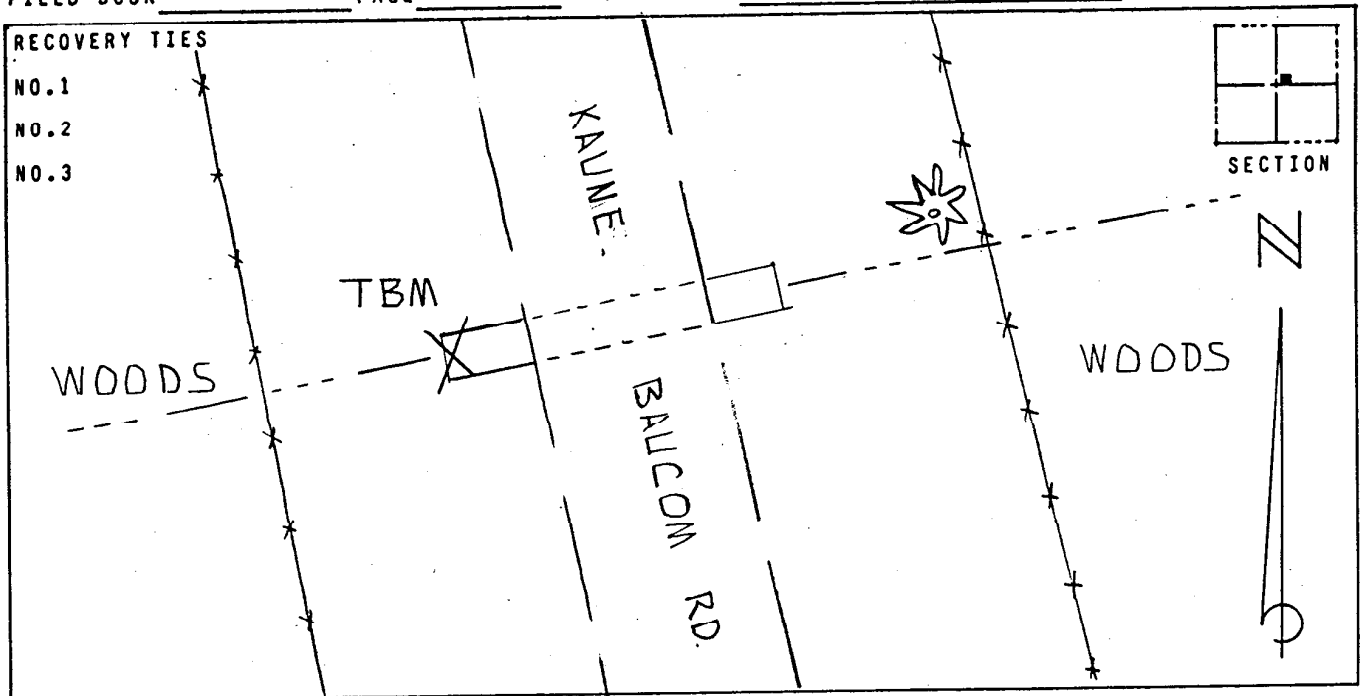
HORIZONTAL CONTROL ORIGINATED ON _____ ORDER CONTROL ESTABLISHED BY _____
IN _____, ON NORTH AMERICAN DATUM OF 1927.

COORDINATES (FT) NORTH (Y) _____ EAST (X) _____
3RD ORDER STATE AND ZONE FLORIDA, MERCATOR WEST

REFERENCE BEARINGS TO STATION OR OBJECT

DESCRIPTION	BEARING	DISTANCE
_____	_____	_____
_____	_____	_____
_____	_____	_____

FIELD BOOK _____ PAGE _____ SKETCH BY EVS



VERTICAL CONTROL ORIGINATED ON 1ST ORDER CONTROL ESTABLISHED BY USC & GS
IN 1966, ON NATIONAL GEODETIC SURVEY DATUM OF 1929.

ELEVATION (FT) 07.25, 3RD ORDER LEVEL BOOK 16 PAGE 21