



*Neve Associates*  
7025 N.W. 4th St. • Plantation, Florida 33317

U.S.D.A SOIL CONSERVATION SERVICE  
MAPPING BY  
HAMRICK AERIAL SURVEYS, INC.  
CLEARWATER, FLORIDA

Marker Designation SCS-50 & TBM County LEE State FL  
Located in Sec. 3 Twp. 43 S Rge. 24 E U.S.G.S. Quad Map GILCHRIST 7.5min.

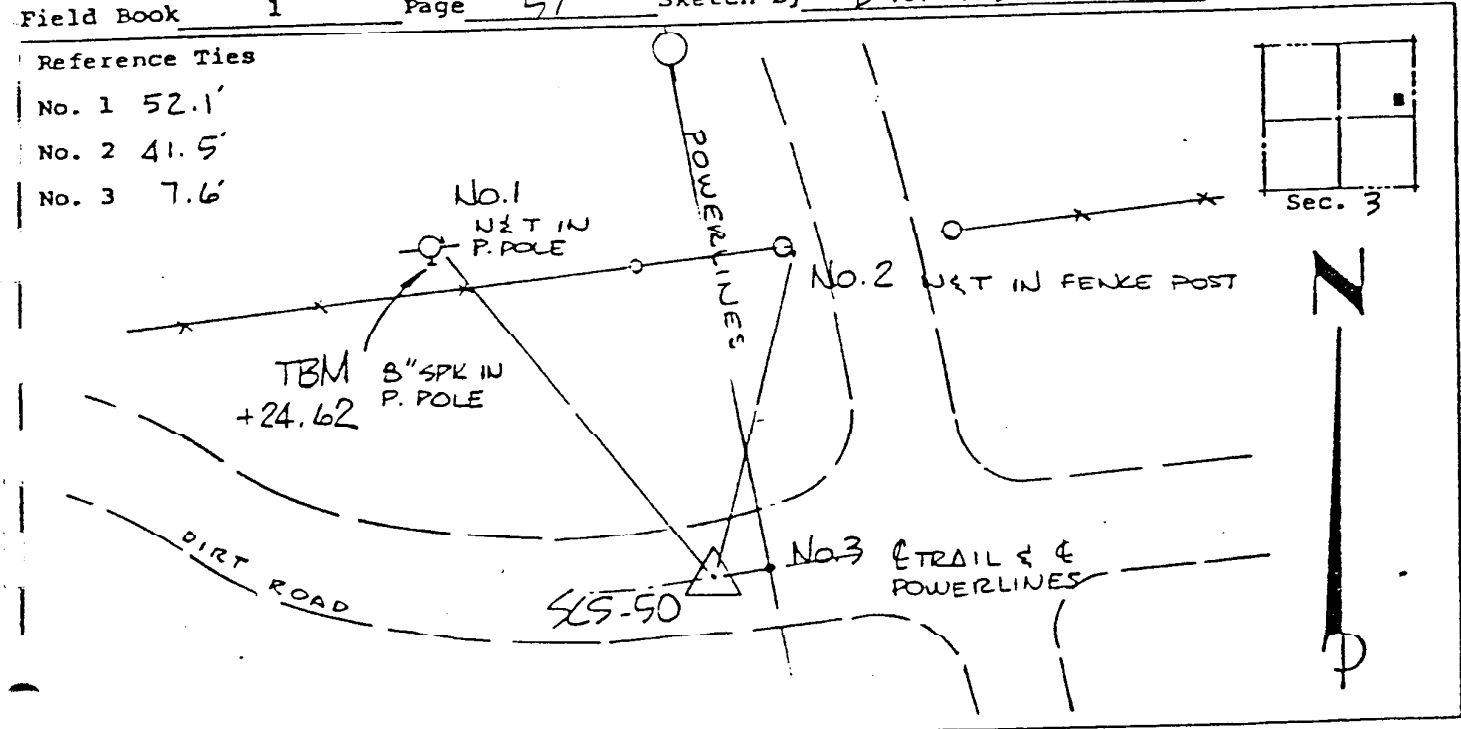
To reach point from INT. OF US 41 / CLEVELAND AV AND SR 78 /  
BAVSHORE RD. : 60 N. 6.0 MI ± TO DIRT RD. - E;  
THENCE E. 2.2 MI ± TO POWERLINE INT AND POINT.

Type of Marker 2" LEE CO DISK, 0.8' BLW ROAD Date set NOV. - DEC. 19 80  
HORIZONTAL CONTROL originated on 2ND order control established by FLA. DOT  
in 1969, on North American 1927 datum.  
Coordinates: North (y) 883332.360 East (x) 535022.177  
(feet) 3rd Order State and Zone Florida, Mercator West

Reference Bearings to Station or Object:

Description	Bearing	Distance
<u>SCS-49</u>	<u>N 89° 59' 05.8" W</u>	<u>2592.394</u>
<u>SCS-51</u>	<u>N 11° 13' 48.1" W</u>	<u>4805.733</u>

Field Book 1 Page 57 Sketch by D.W. ALBERTSEN



VERTICAL CONTROL originated on 1ST order control established by USC & GS agency  
in 1966, on National Geodetic Survey Datum of 1929 datum.  
Elevation 22.82, SCS-50 DISK, 3rd Order Level Book 3 Page 47