



LEE COUNTY, FLORIDA
 AERIAL MAPPING PROJECT
 MAPPING BY: HAMRICK AERIAL SURVEYS, INC.
 CLEARWATER, FLORIDA

DESIGNATION TBM 16-5 COUNTY LEE STATE FL

LOCATED IN SEC 26 TWP 43 S. RGE 26 E USGS QUAD MAP DLGA 7.5 MIN.

TO REACH SURVEY MARK FROM INT. S.R. 80 + HICKEY CR. RD. AT SEC.
COR. ^{23/24} 26/25 - 43 - 26: 60 S. ± 0.7 MI. ON HICKEY CR.
RD. TO MARK.

TYPE OF MARK RR SPIKE IN E. FACE OF P. POLE DATE SET MAY 1985

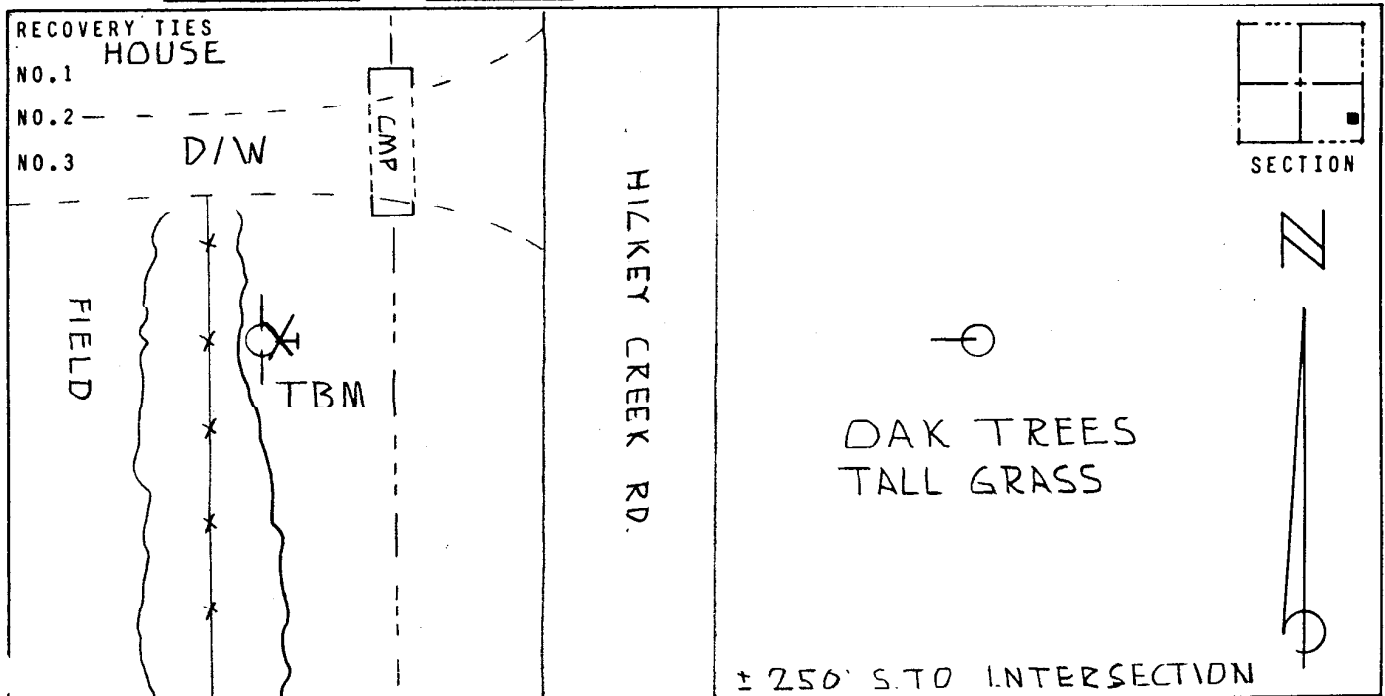
HORIZONTAL CONTROL ORIGINATED ON _____ ORDER CONTROL ESTABLISHED BY _____
 IN _____, ON NORTH AMERICAN DATUM OF 1927.

COORDINATES (FT) NORTH (Y) _____ EAST (X) _____
3RD ORDER STATE AND ZONE FLORIDA, MERCATOR WEST

REFERENCE BEARINGS TO STATION OR OBJECT

DESCRIPTION	BEARING	DISTANCE
_____	_____	_____
_____	_____	_____
_____	_____	_____

FIELD BOOK _____ PAGE _____ SKETCH BY EVS



VERTICAL CONTROL ORIGINATED ON 1ST ORDER CONTROL ESTABLISHED BY VSC + GS
 IN 1966, ON NATIONAL GEODETIC SURVEY DATUM OF 1929.

ELEVATION (FT) 09.60, 3RD ORDER LEVEL BOOK 16 PAGE 5