



Marker Designation SLS-13 & TBM County LEE State FL  
Located in Sec. 19 Twp. 43 S. Rge. 26 E. U.S.G.S. Quad Map FT. MYERS 7.5mi

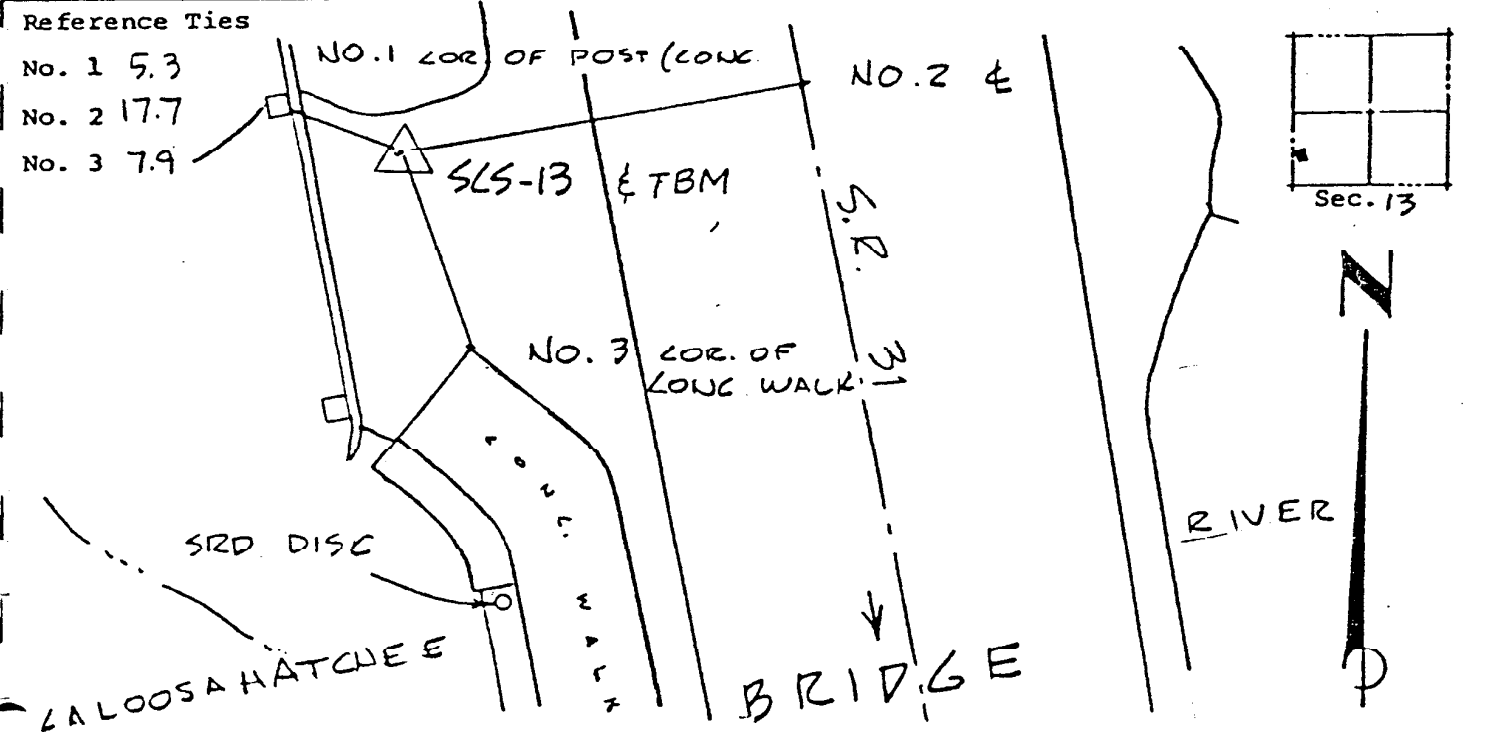
To reach point from INT. OF US. 41 & SR. 78 IN N. FT. MYERS. GO E. ON SR. 78  
9.65 MI.± TO SR. 31. THENCE S. 0.3 MI.± TO N. END OF BRIDGE OVER  
CALOOSA HATCHEE RIVER & MARKER.

Type of Marker 2" LEE CO. DISC, FLUSH W. PVMT. Date set NOV. - DEC. 19 80  
HORIZONTAL CONTROL originated on 2<sup>ND</sup> order control established by FLA. D.O.T.  
in 1969, on North American 1927 datum. agency  
Coordinates: North (y) 866488.198 East (x) 577972.635  
(feet)  
3rd Order State and Zone Florida, Mercator West

Reference Bearings to Station or Object:

Description	Bearing	Distance
<u>SLS-12</u>	<u>N 0° 28' 47.6" W</u>	<u>8209.487</u>
<u>NGS "HALGRIM"</u>	<u>S 71° 32' 04.0" W</u>	<u>2149.588</u>

Field Book 1 Page 15 Sketch by D.W. ALBERTSEN



VERTICAL CONTROL originated on 1<sup>ST</sup> order control established by U.S.C. & G.S.  
in 1966, on National Geodetic Survey Datum of 1929 datum. agency  
year 27.22 SRD DISC (Deniselev.)  
Elevation 22.82 SLS-, 3rd Order Level Book 3 Page 7  
SRD FL. 27.255