



Deni Associates
FORT MYERS, FLORIDA

LEE COUNTY, FLORIDA
AERIAL MAPPING PROJECT
MAPPING BY: HAMRICK AERIAL SURVEYS, INC
CLEARWATER, FLORIDA

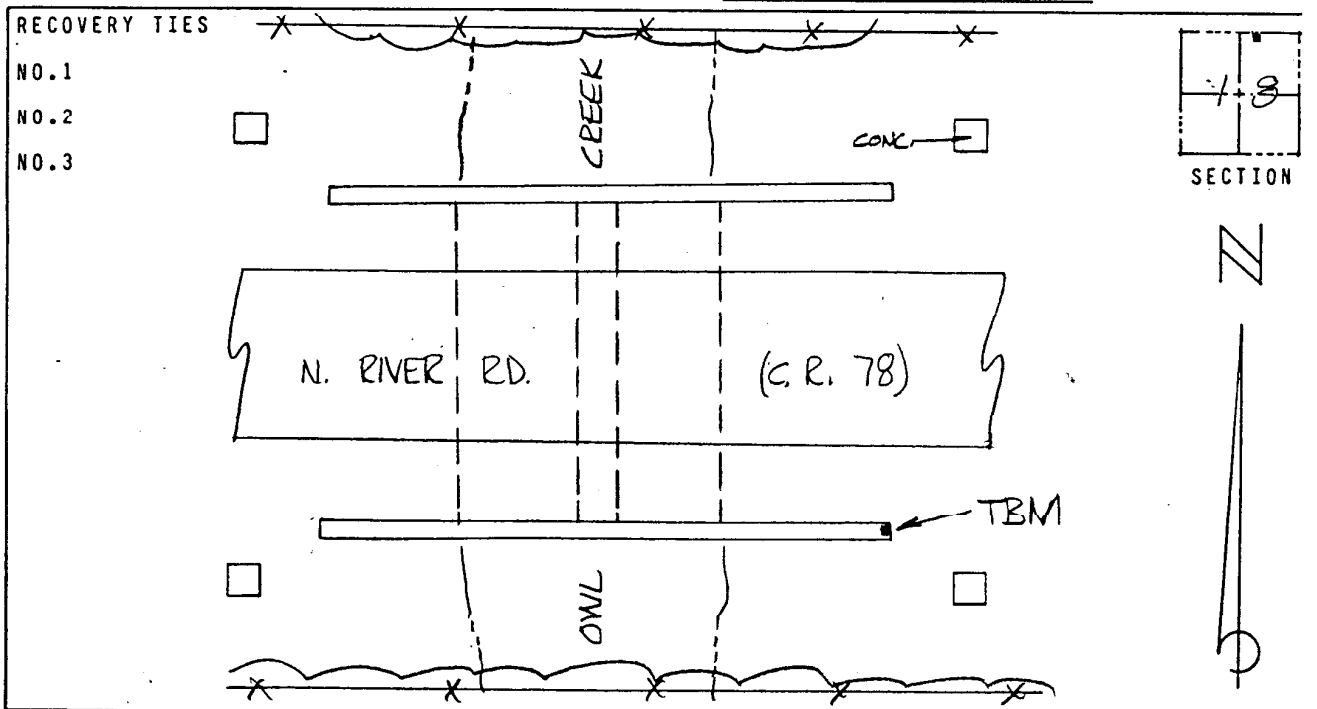
DESIGNATION TBM 17-1 COUNTY LEE STATE FL
LOCATED IN SEC 18 TWP 43 S. RGE 26 E USGS QUAD MAP FORT MYERS 7.5 M
TO REACH SURVEY MARK FROM THE INT. OF S.R. 31 & C.R. 78: GO E. 0.55
MI. ± TO MARK.

TYPE OF MARK CHIS. "D" E. END S. CONC. HDWL. DATE SET MAY 19 85
HORIZONTAL CONTROL ORIGINATED ON _____ ORDER CONTROL ESTABLISHED BY _____
IN _____, ON NORTH AMERICAN DATUM OF 1927.
COORDINATES (FT) NORTH (Y) _____ EAST (X) _____
3RD ORDER STATE AND ZONE FLORIDA, MERCATOR WEST

REFERENCE BEARINGS TO STATION OR OBJECT

DESCRIPTION	BEARING	DISTANCE

FIELD BOOK _____ PAGE _____ SKETCH BY S.E.M.



VERTICAL CONTROL ORIGINATED ON 1ST ORDER CONTROL ESTABLISHED BY USC & GS
IN 1966, ON NATIONAL GEODETIC SURVEY DATUM OF 1929.
ELEVATION (FT) 11.09, 3RD ORDER LEVEL BOOK 17 PAGE 1