



Deni Associates  
FORT MYERS, FLORIDA

LEE COUNTY, FLORIDA  
AERIAL MAPPING PROJECT  
MAPPING BY: HAMRICK AERIAL SURVEYS, INC.  
CLEARWATER, FLORIDA

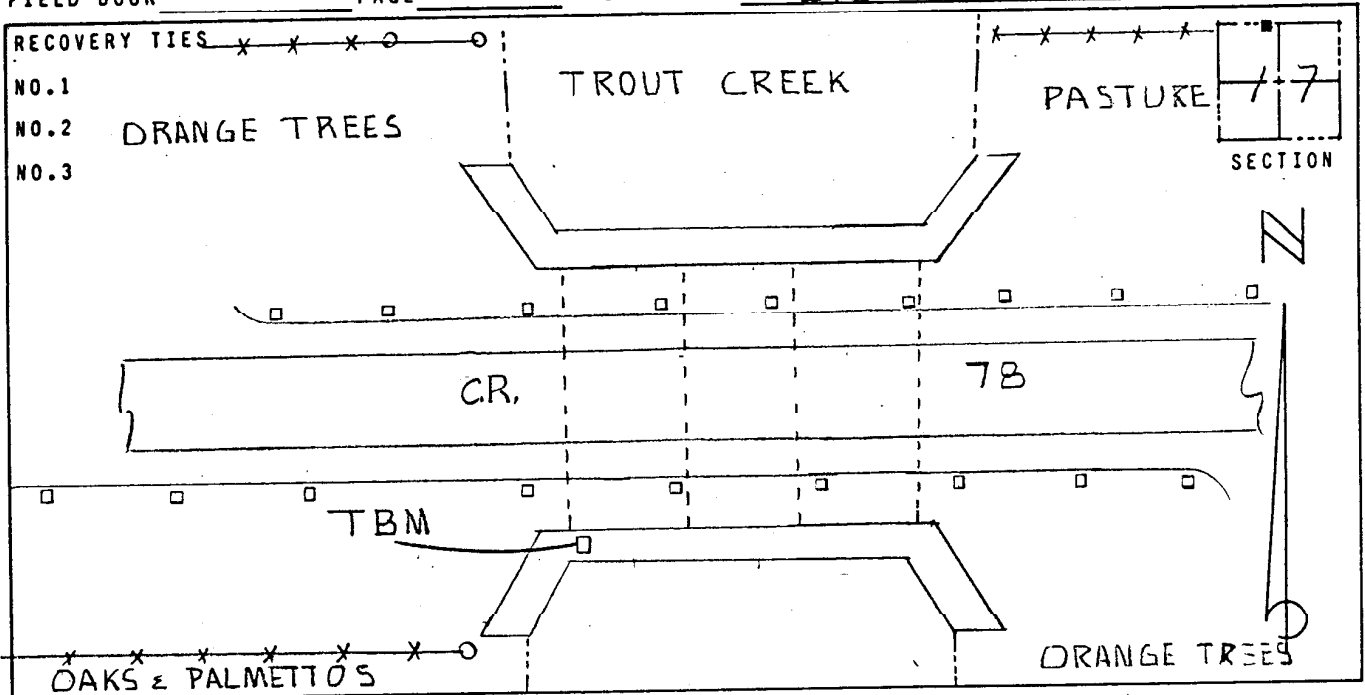
DESIGNATION TBM 17-2 COUNTY LEE STATE FL  
LOCATED IN SEC. 17 TWP 43 S. RGE 26 E USGS QUAD MAP OLGA 7.5 MIN.  
TO REACH SURVEY MARK FROM THE INT. OF S.R. 31 & C.R. 78 GO E. 1.45 MI ±  
TO MARK.

TYPE OF MARK CH"O" IN W. END OF CONC HEADWALL DATE SET APRIL 19 85  
HORIZONTAL CONTROL ORIGINATED ON \_\_\_\_\_ ORDER CONTROL ESTABLISHED BY \_\_\_\_\_  
IN \_\_\_\_\_, ON NORTH AMERICAN DATUM OF 1927.  
COORDINATES (FT) NORTH (Y) \_\_\_\_\_ EAST (X) \_\_\_\_\_  
3RD ORDER STATE AND ZONE FLORIDA, MERCATOR WEST

REFERENCE BEARINGS TO STATION OR OBJECT

DESCRIPTION	BEARING	DISTANCE

FIELD BOOK \_\_\_\_\_ PAGE \_\_\_\_\_ SKETCH BY EVS



VERTICAL CONTROL ORIGINATED ON 1<sup>ST</sup> ORDER CONTROL ESTABLISHED BY USC & GS  
IN 1966, ON NATIONAL GEODETIC SURVEY DATUM OF 1929.  
ELEVATION (FT) 09.29, 3RD ORDER LEVEL BOOK 17 PAGE 2