



Deni Associates

7025 N.W. 4th St. - Plantation, Florida 33317

LEE COUNTY, FLORIDA AERIAL MAPPING PROJECT

MAPPING BY
HAMRICK AERIAL SURVEYS, INC.
CLEARWATER, FLORIDA

Marker Designation TBM PISV-24 County LEE State FL

Located in Sec. 23 Twp. 4SS Rge. 20E U.S.G.S. Quad Map PORT BOCA GRANDE 7.5min

To reach point from INT. GASPARILLA RD. & LEE-CHARLOTTE CO. LINE:
GO S. 3.1 MI ± TO "T" IN ROAD; THENCE W. 0.1 MI ± TO GULF BLVD.;
THENCE CONTINUE S. 0.6 MI ± TO BAILY ST. & MARKER.

Type of Marker 8" SPR. IN S.W. FACE OF P. POLE Date set FEB. 19 81

HORIZONTAL CONTROL originated on _____ order control established by _____ agency

in _____ year, on _____ North American 1927 datum.

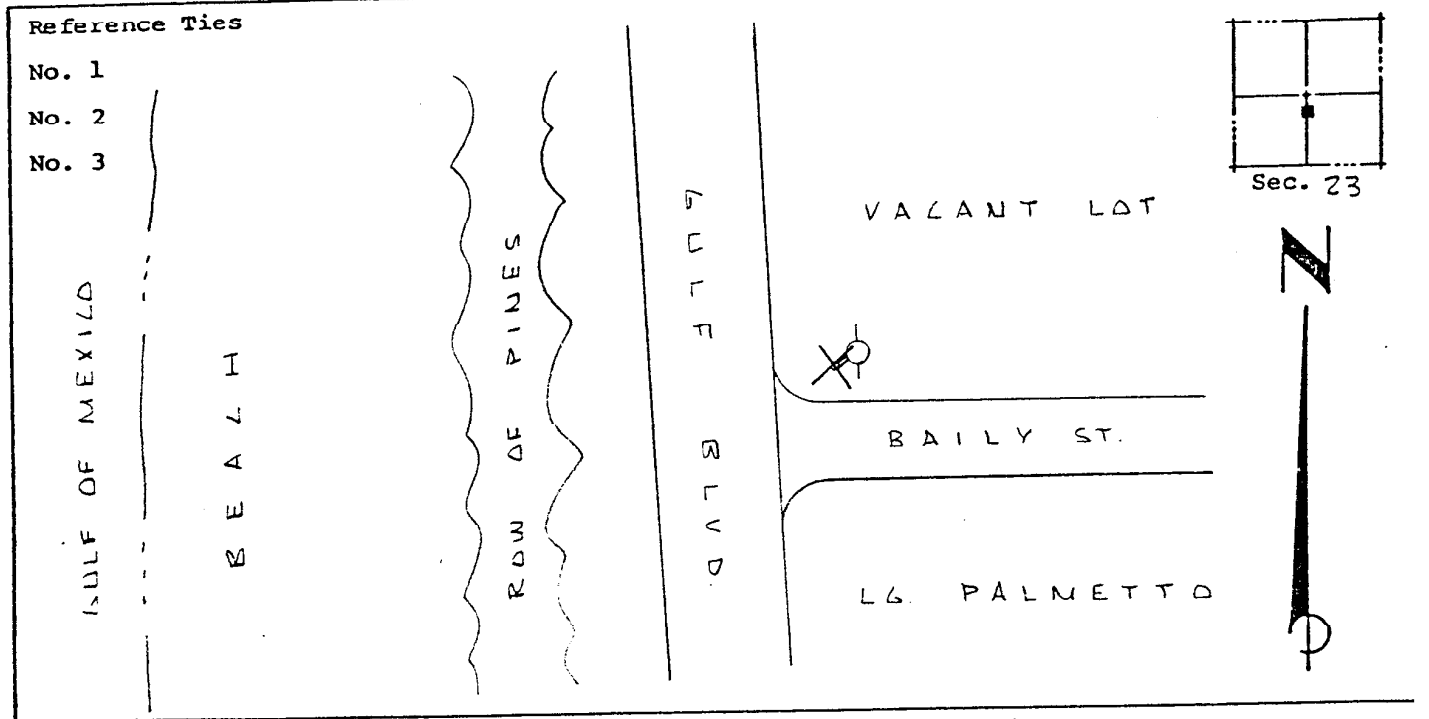
Coordinates: North (y) _____ East (x) _____
(feet)

3rd Order State and Zone Florida, Mercator West

Reference Bearings to Station or Object:

Description	Bearing	Distance

Field Book _____ Page _____ Sketch by A. LETHEBY



VERTICAL CONTROL originated on 3rd order control established by DNR agency

in 1975 year, on National Geodetic Survey Datum of 1929 datum.

Elevation 8.39 (feet), 3rd Order Level Book V3 Page 48