

LEE COUNTY SURVEY MARK DESCRIPTION

DESIGNATION 43-23-05-01 COUNTY LEE STATE FL.

LOCATED IN SEC 05 TWP 43 S. RGE 23 E. USGS QUAD MAP Punta Gorda S.E.

TO REACH SURVEY MARK:

From the intersection of S.R. 765 (Burnt Store Road) and the Lee Charlotte County Line travel along S.R 765 southerly 0.15 mile to the mark. The mark is 10' west of a witness sign.

TYPE OF 4" X 4" Concrete Monument With Brass Disk

MARK GPS 43-23-05-01 DATE SET March 23, 19 90

HORIZONTAL CONTROL ORIGINATED ON 2nd/1st ORDER CONTROL BY U.S.C. & GS / NGS

ON 1927 DATUM. ON 1983 (1990 GPS Adjustment) DATUM.

COORDINATES (FT), 2nd ORDER COORDINATES (FT), 2nd ORDER

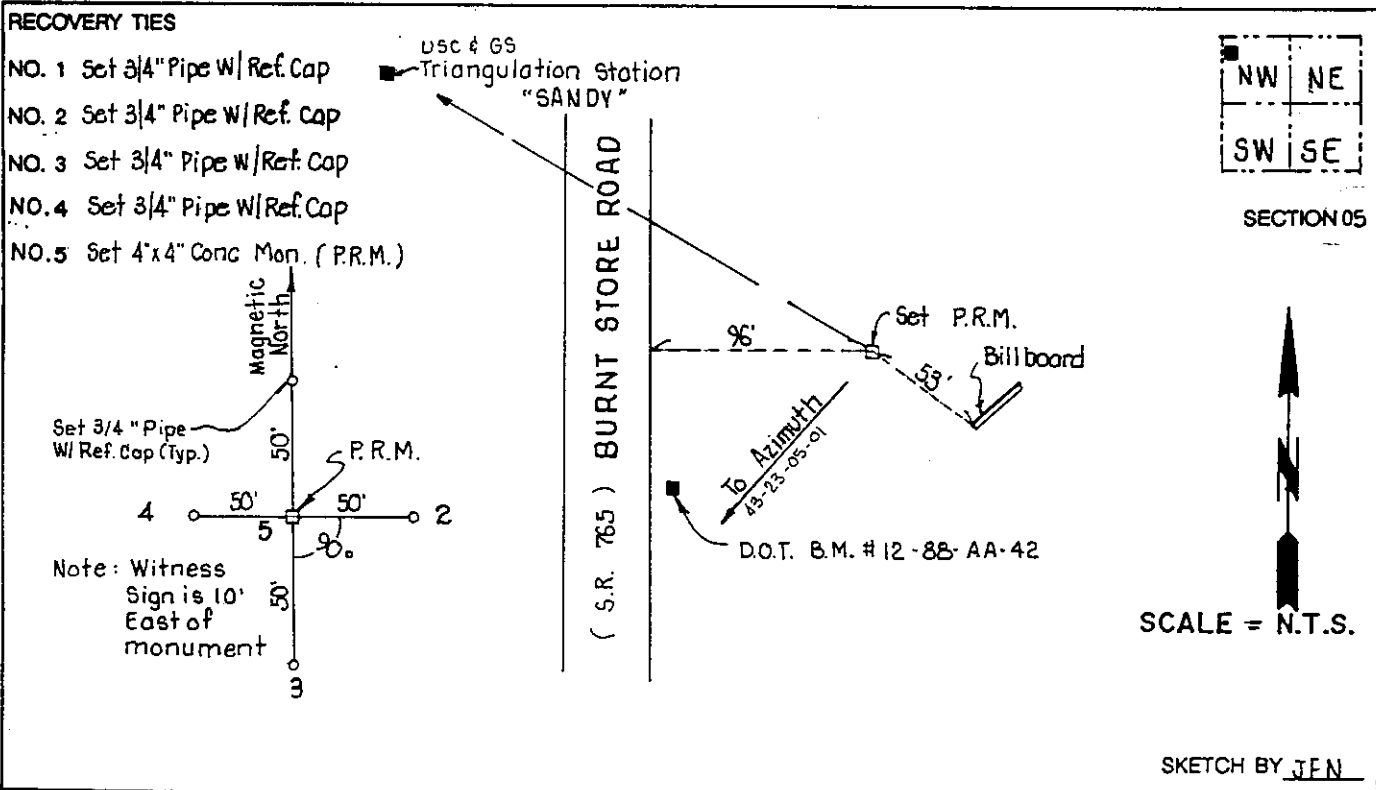
NORTHING (Y) 884611.818 NORTHING (Y) 884782.017

EASTING (X) 487565.980 EASTING (X) 643796.578

GRID FLORIDA TRANSVERSE MERCATOR RECOVERED BY _____

ZONE WEST DATE, CONDITION _____

FIELD BOOK 1738 PAGE 47



JOHNSON ENGINEERING, INC.

CIVIL ENGINEERS - LAND SURVEYORS

2158 JOHNSON STREET, POST OFFICE BOX 1550, FORT MYERS, FLORIDA, 33902-1550

PHONE (813) 334-0046