



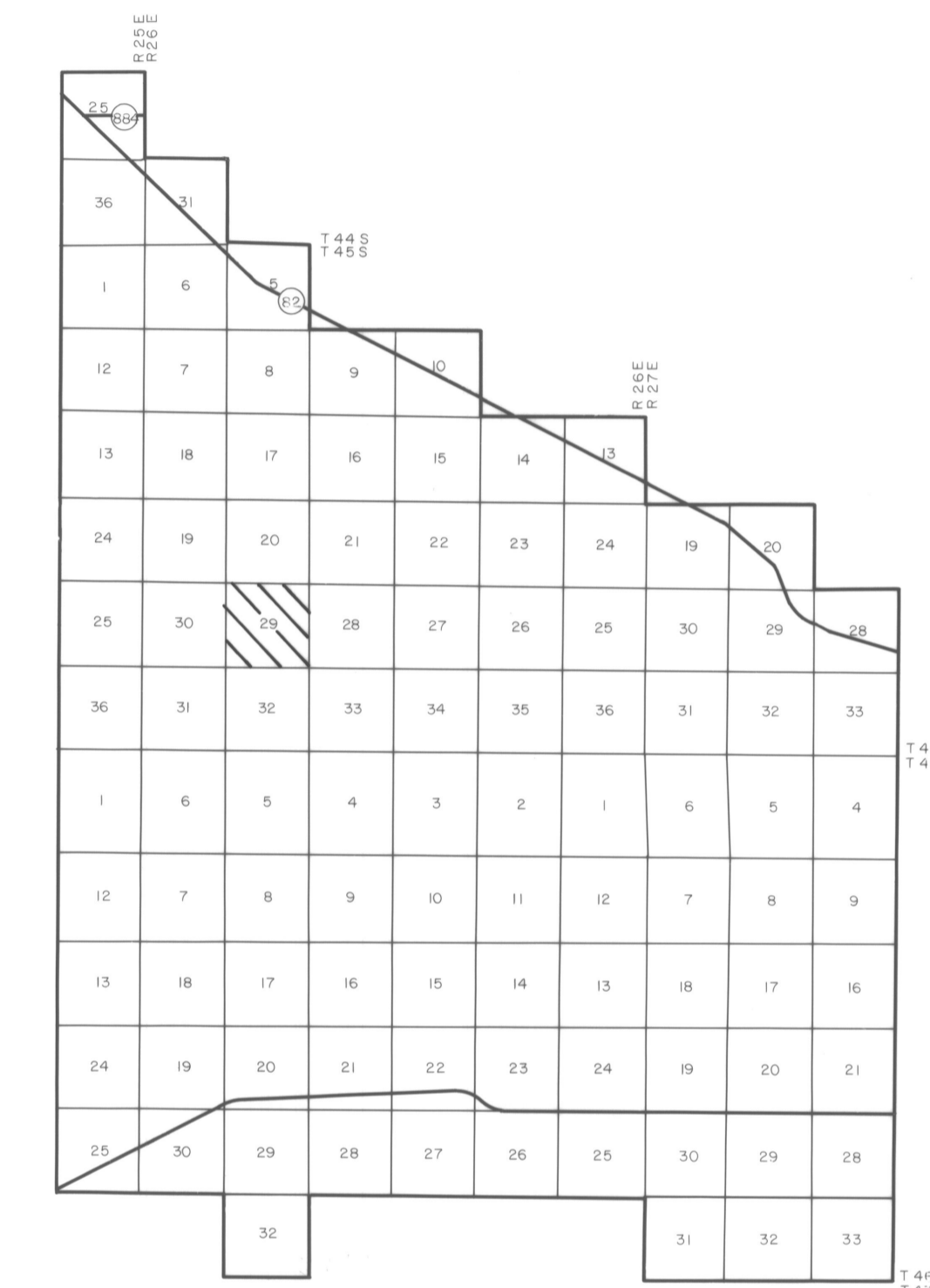
COMPILED BY PHOTOGRAMMETRIC METHODS
BY
HAMRICK • *Aerial Surveys, Inc.*



CLEARWATER FLORIDA

LEGEND

- HORIZONTAL CONTROL U.S.C.&G.S. △
- TRAVERSE STATIONS 4-5-2 ○
- VERTICAL CONTROLS 9.13 X
- SECTION CORNERS 2 | 1
- CONTOURS 5 ——— 10 ——— 15 ———
- DEPRESSION CONTOURS 12.5
- SPOT ELEVATIONS TBM X
- T. B. M. 7.2



GEODETIC CONTROL SURVEYS
BY



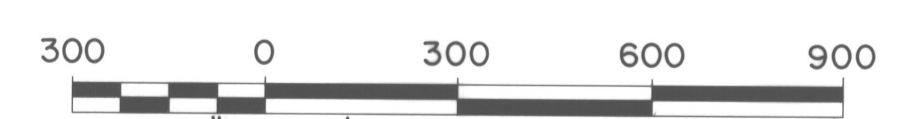
NOTE ACCURACY - IT IS INTENDED THAT THIS MAPPING COMPLY WITH U.S. NATIONAL MAP ACCURACY STANDARDS HOWEVER SUCH ACCURACY OR ANY OTHER LEVEL OF ACCURACY IS NOT GUARANTEED BY LEE COUNTY FLORIDA

THE LAND LINE INFORMATION SHOWN HERE ON IS COMPILED FROM THE BEST AVAILABLE DATA AND DOES NOT NECESSARILY REPRESENT TRUE LAND LINE LOCATION

DASHED CONTOURS AND UNDERLINED ELEVATIONS INDICATE STANDARD VERTICAL ACCURACY REDUCED BY HEAVY FOLIAGE COVER

GRIDS BASED ON FLORIDA STATE PLANE COORDINATE SYSTEM WEST ZONE

ELEVATIONS BASED ON USCGS DATUM



DATE OF PHOTOGRAPHY NOV 82
DATE OF MAPPING AUG 83

**LEE COUNTY
FLORIDA**

SECTION 29 T 45 S R 26 E

29-45-26