

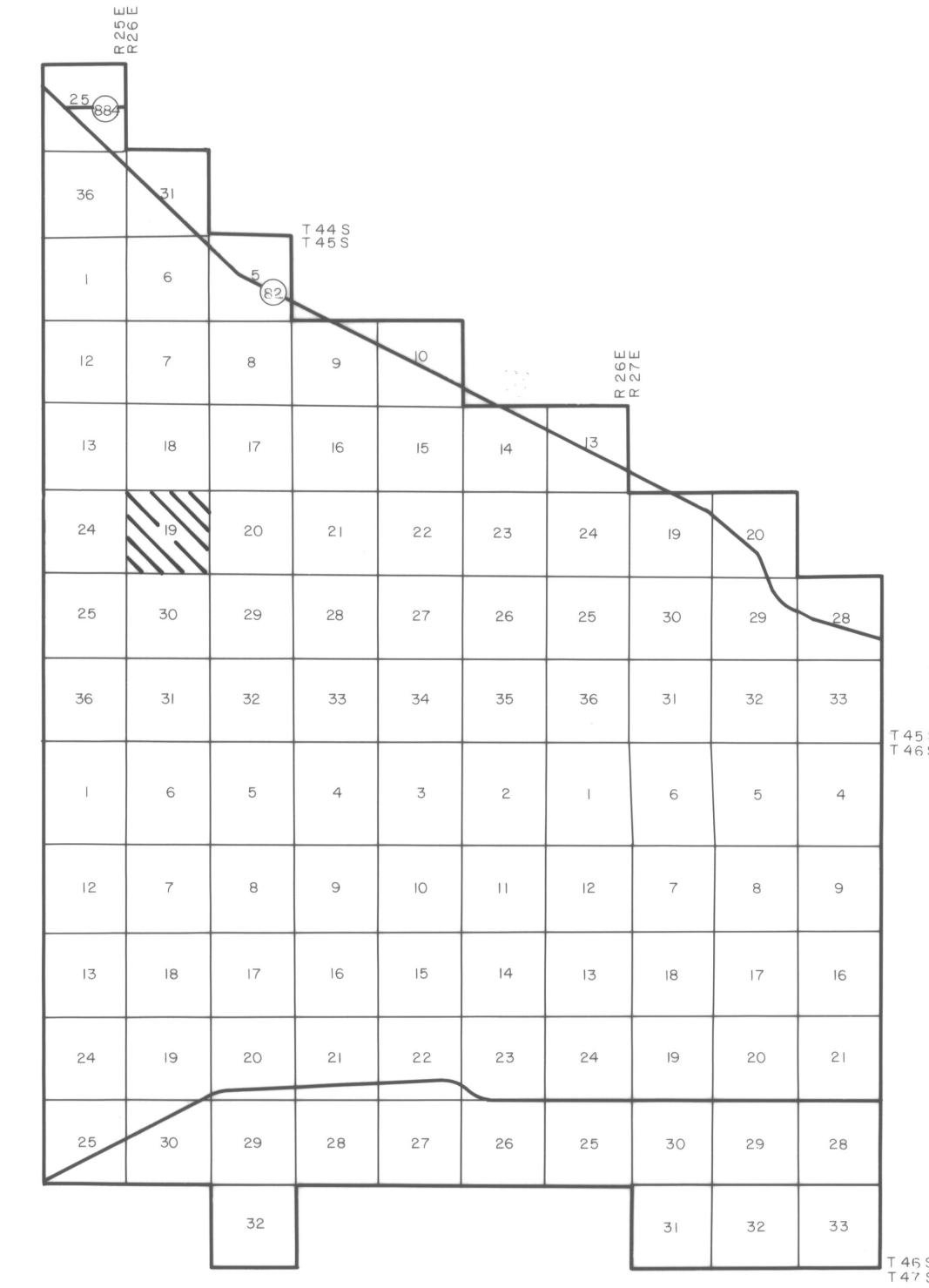
COMPILED BY PHOTOGRAMMETRIC METHODS  
BY  
**HAMRICK** • Aerial Surveys, Inc.



CLEARWATER FLORIDA

LEGEND

HORIZONTAL CONTROL U.S.C.&G.S.	△
TRAVERSE STATIONS	4-5-2 ⊙
VERTICAL CONTROLS	9.13 X
SECTION CORNERS	$\frac{2}{11} \frac{1}{12}$
CONTOURS	$\frac{5}{10}$
DEPRESSION CONTOURS	$\frac{15}{10}$
SPOT ELEVATIONS	12.5
T. B. M.	TBM X 7.2



GEODETIC CONTROL SURVEYS



NOTE: ACCURACY: IT IS INTENDED THAT THIS MAPPING COMPLY WITH U.S. NATIONAL MAP ACCURACY STANDARDS. HOWEVER, SUCH ACCURACY OR ANY OTHER LEVEL OF ACCURACY IS NOT GUARANTEED BY LEE COUNTY, FLORIDA.

THE LAND LINE INFORMATION SHOWN HERE ON IS COMPILED FROM THE BEST AVAILABLE DATA AND DOES NOT NECESSARILY REPRESENT TRUE LAND LINE LOCATION.

DASHED CONTOURS AND UNDERLINED ELEVATIONS INDICATE STANDARD VERTICAL ACCURACY REDUCED BY HEAVY FOLIAGE COVER.

GRIDS BASED ON FLORIDA STATE PLANE COORDINATE SYSTEM WEST ZONE.

ELEVATIONS BASED ON U.S.C.&G.S. DATUM.



SCALE 1" = 300' CONTOUR INTERVAL 1'

DATE OF PHOTOGRAPHY DEC 82  
DATE OF MAPPING APRIL 83

**LEE COUNTY**  
FLORIDA

SECTION 19 T 45 S R 26 E

19-45-26