

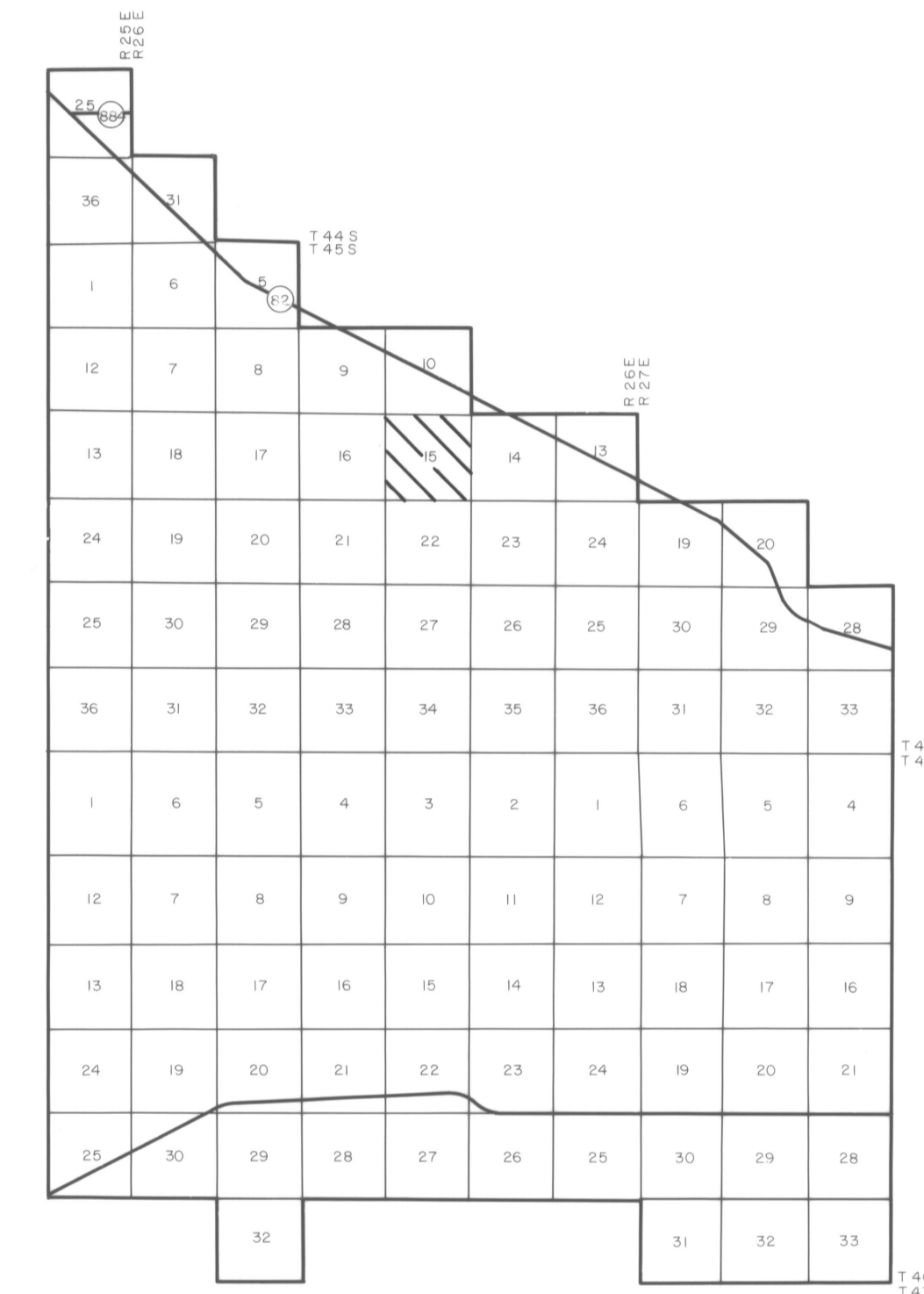
COMPILED BY PHOTOGRAMMETRIC METHODS
BY
HAMRICK • Aerial Surveys, Inc.



CLEARWATER FLORIDA

LEGEND

HORIZONTAL CONTROL U.S.C.&G.S.	△
TRAVERSE STATIONS	4-5-2 ○
VERTICAL CONTROLS	9.13 X
SECTION CORNERS	2 1 11 12
CONTOURS	5 10 15
DEPRESSION CONTOURS	15
SPOT ELEVATIONS	12.5
T. B. M.	TBM X 7.2



GEODETC CONTROL SURVEYS

BY
Dani Associates
FT. MYERS, FLORIDA

NOTE ACCURACY: IT IS INTENDED THAT THIS MAPPING COMPLY WITH U.S. NATIONAL MAP ACCURACY STANDARDS HOWEVER SUCH ACCURACY OR ANY OTHER LEVEL OF ACCURACY IS NOT GUARANTEED BY LEE COUNTY FLORIDA

THE LAND LINE INFORMATION SHOWN HERE ON IS COMPILED FROM THE BEST AVAILABLE DATA AND DOES NOT NECESSARILY REPRESENT TRUE LAND LINE LOCATION
DASHED CONTOURS AND UNDERLINED ELEVATIONS INDICATE STANDARD VERTICAL ACCURACY REDUCED BY HEAVY FOLIAGE COVER

GRIDS BASED ON FLORIDA STATE PLANE COORDINATE SYSTEM WEST ZONE
ELEVATIONS BASED ON USCGS DATUM



SCALE 1" = 300' CONTOUR INTERVAL 1'

DATE OF PHOTOGRAPHY NOV 82
DATE OF MAPPING NOV 83

LEE COUNTY
FLORIDA

SECTION 15 T 45 S R 26 E

15-45-26

