



COMPILED BY PHOTOGRAMMETRIC METHODS  
BY

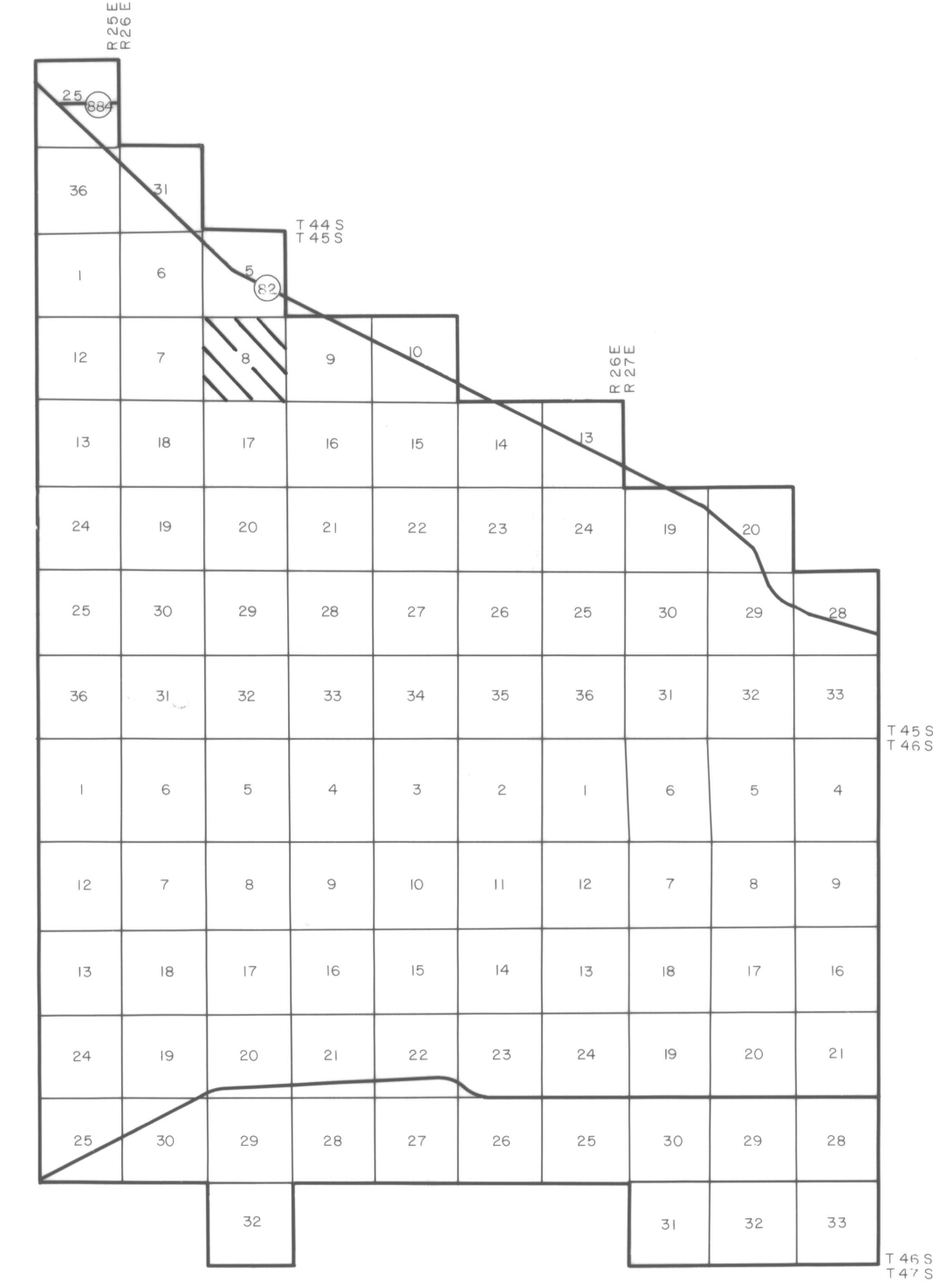
**HAMRICK** • Aerial Surveys, Inc.



CLEARWATER FLORIDA

LEGEND

- HORIZONTAL CONTROL U.S.C.&G.S. △
- TRAVERSE STATIONS 4-5-2 ○
- VERTICAL CONTROLS 9.13 X
- SECTION CORNERS 2 | 1  
11 | 12
- CONTOURS 5  
10  
15
- DEPRESSION CONTOURS 15
- SPOT ELEVATIONS 12.5
- T. B. M. TBM X  
7.2



GEODETC CONTROL SURVEYS

BY  
**Deni Associates**  
FT. MYERS, FLORIDA

NOTE ACCURACY - IT IS INTENDED THAT THIS MAPPING COMPLY WITH U.S. NATIONAL MAP ACCURACY STANDARDS HOWEVER SUCH ACCURACY OR ANY OTHER LEVEL OF ACCURACY IS NOT GUARANTEED BY LEE COUNTY FLORIDA

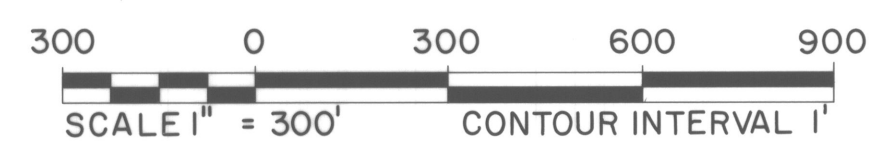


THE LAND LINE INFORMATION SHOWN HERE ON IS COMPILED FROM THE BEST AVAILABLE DATA AND DOES NOT NECESSARILY REPRESENT TRUE LAND LINE LOCATION

DASHED CONTOURS AND UNDERLINED ELEVATIONS INDICATE STANDARD VERTICAL ACCURACY REDUCED BY HEAVY FOLIAGE COVER

GRIDS BASED ON FLORIDA STATE PLANE COORDINATE SYSTEM WEST ZONE

ELEVATIONS BASED ON U.S.C.&G.S. DATUM



DATE OF PHOTOGRAPHY NOV 82  
DATE OF MAPPING AUG 83

**LEE COUNTY**  
FLORIDA

SECTION 8 T 45 S R 26 E

8-45-26