

COMPILED BY PHOTOGRAMMETRIC METHODS BY GEODETIC CONTROL SURVEY

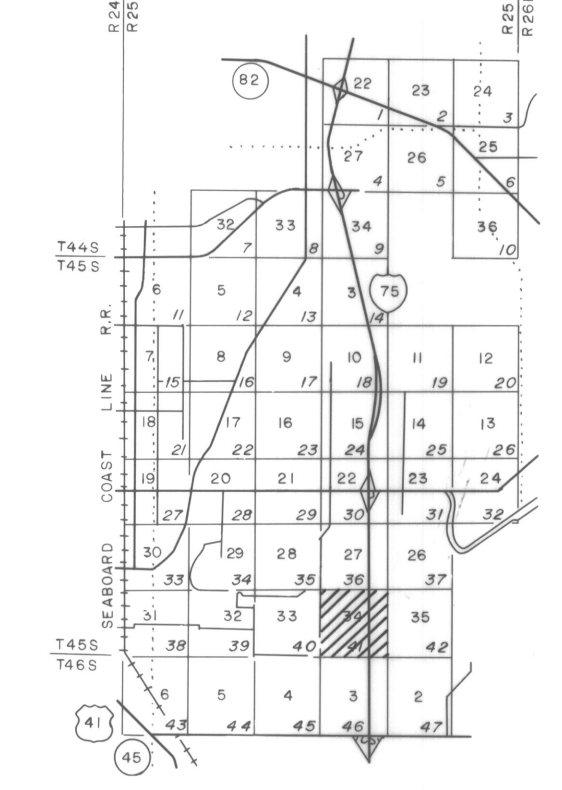
W **GEOGRAPHIC INFORMATION SERVICES**
 WOOLPERT

D **Deni Associa**
 FT. MYERS, FLOR.

LEGEND

- HORIZONTAL CONTROL U.S.C. & G.S. △
- FLORIDA STATE DEPT. OF TRANSPORTATION ○
- TRAVERSE STATIONS ○
- VERTICAL CONTROLS TBM-7
- SECTION CORNERS X 12.05
- CONTOURS 1011
- DEPRESSION CONTOURS 150.4
- SPOT ELEVATIONS 40
- STATE ROUTE 50
- U.S. ROUTE 50.4
- INTERSTATE HIGHWAY ○
- POLITICAL BOUNDARIES ---

KEY MAP



GRID NUMBERS REPRESENT SECTION NUMBERS
 IN-DOTTED NUMBERS REPRESENT SHEET NUMBERS

NOTE:

ACCURACY: THIS MAPPING IS INTENDED TO COMPLY WITH NATIONAL MAP ACCURACY STANDARDS. HOWEVER, SUCH ACCURACY OR ANY OTHER LEVEL OF ACCURACY IS NOT GUARANTEED BY LEE COUNTY, FLORIDA.

THE LAND LINE INFORMATION SHOWN IS COMPILED FROM THE BEST AVAILABLE DATA AND DOES NOT NECESSARILY REPRESENT TRUE LAND LINE LOCATION.

CONTOUR LINES ARE DIGITALLY COMPILED BY PHOTOGRAMMETRIC METHODS TO NATIONAL MAP ACCURACY STANDARDS. HOWEVER, THEY DO NOT NECESSARILY FIT THE HORIZONTAL POSITION OF THE PHOTOGRAPHIC BASE DUE TO RELIEF DISPLACEMENT.

DASHED CONTOURS AND UNDERLINED ELEVATIONS INDICATE STANDARD VERTICAL ACCURACY REDUCED BY TREE COVER.

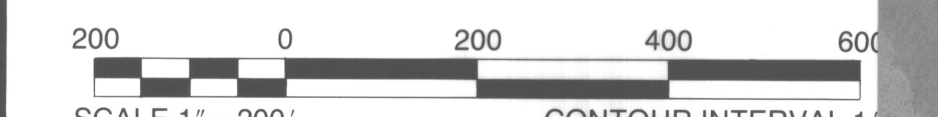
THIS SHEET MAY NOT BE REPRODUCED, IN PART OR IN FULL, WITHOUT SPECIFIC APPROVAL OF THE DIVISION OF LAND INFORMATION SYSTEMS, LEE COUNTY.

L. I. S. DIV.
 1809 HETMAN ST.
 FT. MYERS, FLORIDA

COPYRIGHTED BY LEE COUNTY, FLORIDA.
 ALL RIGHTS RESERVED.

GRIDS BASED ON THE FLORIDA STATE PLANE COORDINATE SYSTEM, NAD, 1983

ELEVATIONS BASED ON U.S.C. & G.S. DATUM.



SCALE 1" = 200'
 CONTOUR INTERVAL 1'
 DATE OF BASE PHOTOGRAPHY JULY 1989
 DATE OF MAPPING PHOTOGRAPHY JUNE 1989

LEE COUNTY
 FT. MYERS, FLORIDA

**SIX MILE CYPRESS / TEN MILE BASIN
 LAND INFORMATION SYSTEMS**

SECTION 34 TOWNSHIP 45 SOUTH RANGE 25 EAST

DRAWING NUMBER SHEET 41 OF 4

34-45-25