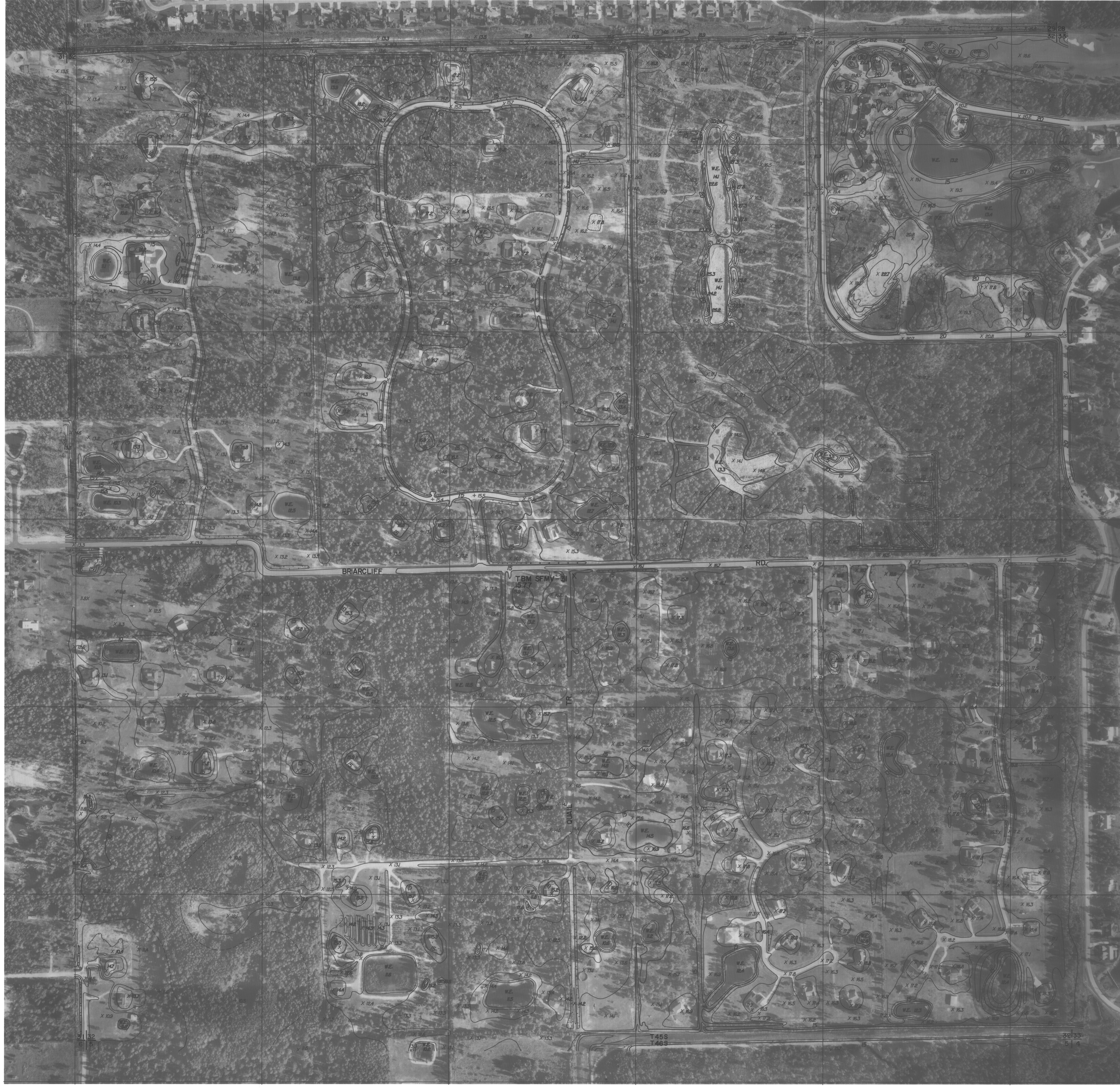


E 709,000 E 710,000 E 710,000 E 710,000 E 712,000 E 712,000 E 713,000 E 714,000

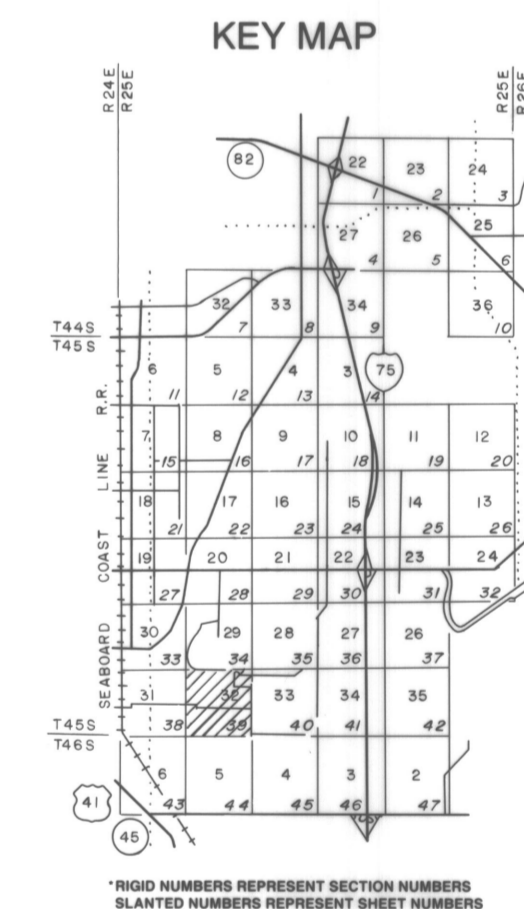
COMPILED BY PHOTOGRAMMETRIC METHODS BY GEOGRAPHIC INFORMATION SERVICES

GEODETIC CONTROL BY Deni Associates, Inc. FT. MYERS, FLORIDA



LEGEND

- HORIZONTAL CONTROL U.S.C. & G.S.
- FLORIDA STATE DEPT. OF TRANSPORTATION
- TRAVERSE STATIONS
- VERTICAL CONTROLS
- SECTION CORNERS
- CONTOURS
- DEPRESSION CONTOURS
- SPOT ELEVATIONS
- STATE ROUTE
- U.S. ROUTE
- INTERSTATE HIGHWAY
- POLITICAL BOUNDARIES



NOTE:

ACCURACY: THIS MAPPING IS INTENDED TO COMPLY WITH NATIONAL MAP ACCURACY STANDARDS. HOWEVER, SUCH ACCURACY, OR ANY OTHER LEVEL OF ACCURACY, IS NOT GUARANTEED BY LEE COUNTY, FLORIDA.

THE LAND LINE INFORMATION SHOWN IS COMPILED FROM THE BEST AVAILABLE DATA AND DOES NOT NECESSARILY REPRESENT TRUE LAND LINE LOCATION.

CONTOUR LINES ARE DIGITALLY COMPILED BY PHOTOGRAMMETRIC METHODS TO NATIONAL MAP ACCURACY STANDARDS. HOWEVER, THEY DO NOT NECESSARILY FIT THE HORIZONTAL POSITION OF THE PHOTOGRAPHIC IMAGE DUE TO RELIEF DISPLACEMENT.

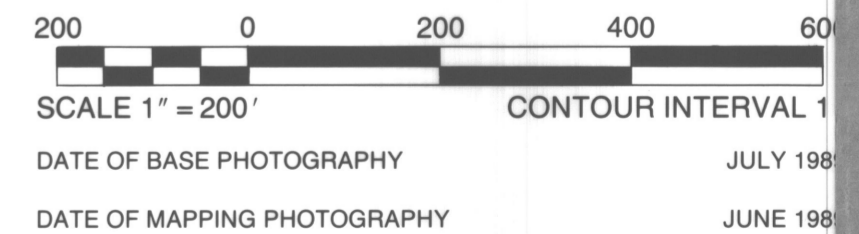
DASHED CONTOURS AND UNDERLINED ELEVATIONS INDICATE STANDARD VERTICAL ACCURACY REDUCED BY TREE COVER.

THIS SHEET MAY NOT BE REPRODUCED, IN PART OR IN FULL, WITHOUT SPECIFIC APPROVAL OF THE DIVISION OF LAND INFORMATION SYSTEMS, LEE COUNTY, FLORIDA.

U.S. G.N.
1989 METRIC ST.
FT. MYERS, FLORIDA

COPYRIGHTED BY LEE COUNTY, FLORIDA.
ALL RIGHTS RESERVED.

GRIDS BASED ON THE FLORIDA STATE PLANE COORDINATE SYSTEM, NAD, 1983
ELEVATIONS BASED ON U.S.C. & G.S. DATUM



LEE COUNTY
FT. MYERS, FLORIDA

SIX MILE CYPRESS / TEN MILE BASIN
LAND INFORMATION SYSTEMS

SECTION 32 TOWNSHIP 45 SOUTH RANGE 25 EAST

DRAWING NUMBER SHEET 39 OF 40

32-45-25