

E 559,000

N 803,000

N 803,000

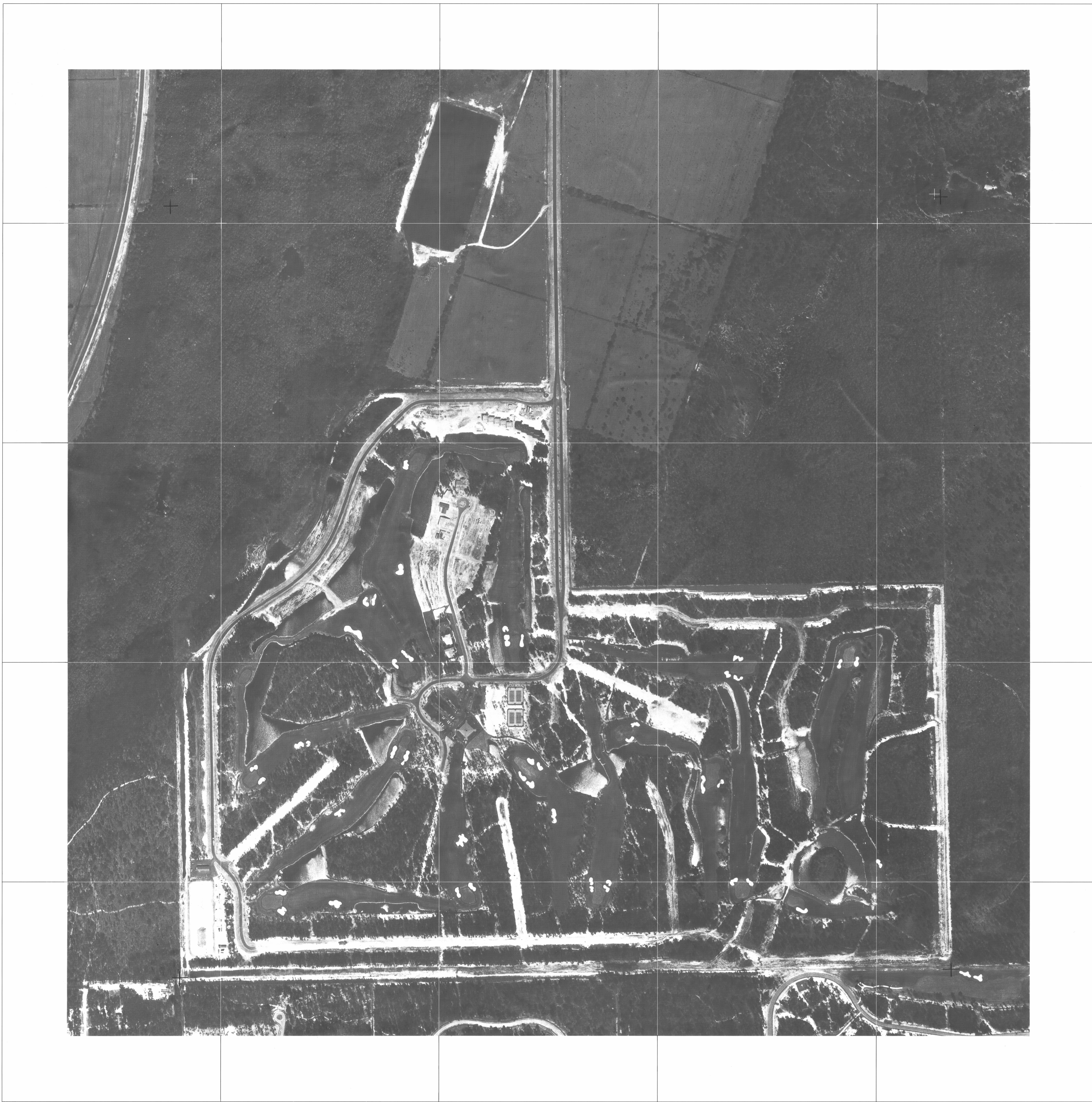
N 801,500

N 800,000

N 798,500

N 797,000

N 795,500



E 551,500      E 553,000      E 554,500      E 556,000      E 557,500      E 559,000

PREPARED BY  
**KUCERA**  
 AND ASSOCIATES, INC.  
 PHOTOGRAMMETRIC CONSULTANTS

**LEGEND**

- HORIZONTAL CONTROL U.S.C. & G.S.      123 △
- FLORIDA D.O.T. CONTROL      ○
- ESTABLISHED SECTION CORNER      ⊕
- GEODETIC CONTROL BY DENI ASSOC.      12 □
- SECTION CORNER (APPROX. LOCATION)      ⊕

36	31	32	33	34	35	36	31
1	6	5	4	3	2	1	6
12	7	8	9	10	11	12	7
13	18	17	16	15	14	13	18
24	19	20	21	22	23	24	19
25	30	29	28	27	26	25	30
36	31	32	33	34	35	36	31
1	6	5	4	3	2	1	6

**KEY MAP**

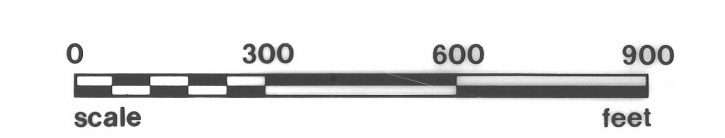


**NOTE:**

ACCURACY: IT IS INTENDED THAT THIS MAPPING COMPLY WITH U.S. NATIONAL MAP ACCURACY STANDARDS. HOWEVER, SUCH ACCURACY OR ANY OTHER LEVEL OF ACCURACY IS NOT GUARANTEED BY LEE COUNTY, FLORIDA.

LAND LINE INFORMATION SHOWN HERE ON IS COMPILED FROM THE BEST AVAILABLE DATA AND DOES NOT NECESSARILY REPRESENT TRUE LAND LINE LOCATION.

GRIDS BASED ON FLORIDA STATE PLANE COORDINATE SYSTEM, WEST ZONE.



SCALE 1" = 300'



**County of Lee**  
 DEPARTMENT OF INFORMATION SERVICES  
 FORT MYERS, FLORIDA

**SEC. 29-T 45 S - R 25 E**

DATE OF PHOTOGRAPHY MARCH/1984

29-45-25