



COMPILED BY PHOTOGRAMMETRIC METHODS BY
GEOGRAPHIC INFORMATION SERVICES
 Woolpert
 Deni Assoc
 FT MYERS, FLOR

LEGEND

- HORIZONTAL CONTROL U.S.C.&G.S.
- FLORIDA STATE DEPT. OF TRANSPORTATION
- TRAVERSE STATIONS
- VERTICAL CONTROLS
- SECTION CORNERS
- CONTOURS
- DEPRESSION CONTOURS
- SPOT ELEVATIONS
- STATE ROUTE
- U.S. ROUTE
- INTERSTATE HIGHWAY
- POLITICAL BOUNDARIES



NOTE:

ACCURACY: THIS MAPPING IS INTENDED TO COMPLY WITH NATIONAL MAP ACCURACY STANDARDS. HOWEVER, SUCH ACCURACY OR ANY OTHER LEVEL OF ACCURACY IS NOT GUARANTEED BY LEE COUNTY, FLORIDA.

THE LAND LINE INFORMATION SHOWN IS COMPILED FROM THE BEST AVAILABLE DATA AND DOES NOT NECESSARILY REPRESENT TRUE LAND LINE LOCATION.

CONTOUR LINES ARE DIGITALLY COMPILED BY PHOTOGRAMMETRIC METHODS TO NATIONAL MAP ACCURACY STANDARDS. HOWEVER, THEY DO NOT NECESSARILY FIT THE HORIZONTAL POSITION OF THE PHOTOGRAPHIC IMAGE DUE TO RELIEF DISPLACEMENT.

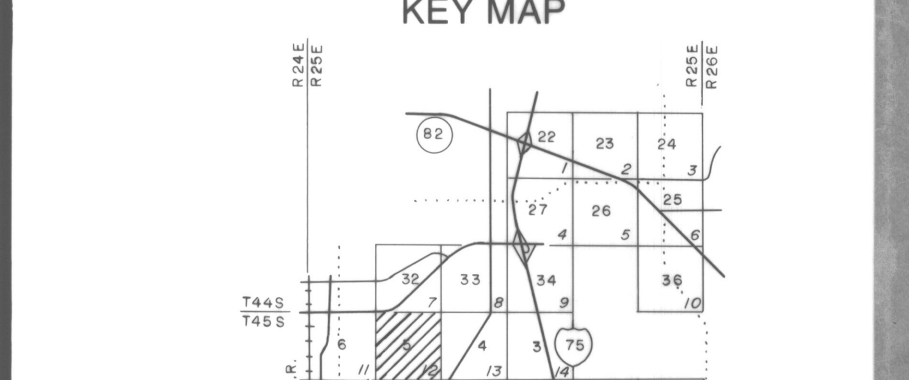
DASHED CONTOURS AND UNDERLINED ELEVATIONS INDICATE STANDARD VERTICAL ACCURACY REDUCED BY TREE COVER.

THIS SHEET MAY NOT BE REPRODUCED, IN PART OR IN FULL, WITHOUT SPECIFIC APPROVAL OF THE DIVISION OF LAND INFORMATION SYSTEMS, LEE COUNTY, FLORIDA.

U.S. DIV.
 1609 NEWMAN ST.
 FT. MYERS, FLORIDA

COPYRIGHTED BY LEE COUNTY, FLORIDA.
 ALL RIGHTS RESERVED.

GRID BASED ON THE FLORIDA STATE PLANE COORDINATE SYSTEM, NAD, 1983
 ELEVATIONS BASED ON U.S.C.&G.S. DATUM



DATE OF BASE PHOTOGRAPHY JULY 1968
 DATE OF MAPPING PHOTOGRAPHY JUNE 1968

LEE COUNTY
 FT. MYERS, FLORIDA

**SIX MILE CYPRESS / TEN MILE BASIN
 LAND INFORMATION SYSTEMS**

SECTION 5 TOWNSHIP 45 SOUTH RANGE 25 E

DRAWING NUMBER SHEET

12 OF

5-45-25