

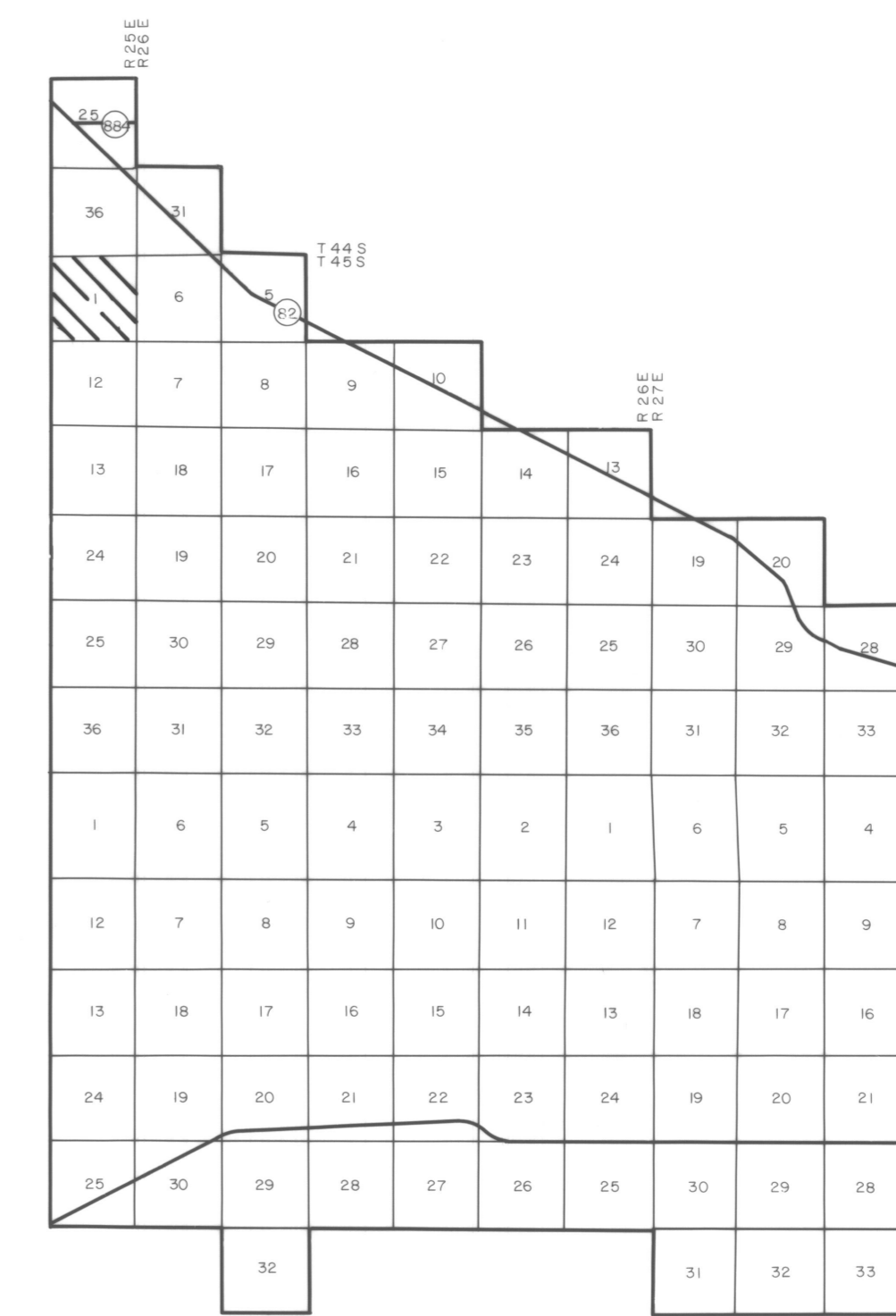
COMPILED BY PHOTOGRAMMETRIC METHODS
BY
HAMRICK • Aerial Surveys, Inc.



CLEARWATER FLORIDA

LEGEND

- HORIZONTAL CONTROL U.S.C.&G.S. △
- TRAVERSE STATIONS 4-5-2 ○
- VERTICAL CONTROLS 9.13 X
- SECTION CORNERS 2 | 1
11 | 12
- CONTOURS 5
10
15
- DEPRESSION CONTOURS 15
- SPOT ELEVATIONS 12.5
- T. B. M. TBM X
7.2



GEODETTIC CONTROL SURVEYS

BY
Deni Associates
FT. MYERS, FLORIDA

NOTE ACCURACY: IT IS INTENDED THAT THIS MAPPING COMPLY WITH U.S. NATIONAL MAP ACCURACY STANDARDS. HOWEVER, SUCH ACCURACY OR ANY OTHER LEVEL OF ACCURACY IS NOT GUARANTEED BY LEE COUNTY FLORIDA.

THE LAND LINE INFORMATION SHOWN HERE ON IS COMPILED FROM THE BEST AVAILABLE DATA AND DOES NOT NECESSARILY REPRESENT TRUE LAND LINE LOCATION.

DASHED CONTOURS AND UNDERLINED ELEVATIONS INDICATE STANDARD VERTICAL ACCURACY REDUCED BY HEAVY FOLIAGE COVER.

GRIDS BASED ON FLORIDA STATE PLANE COORDINATE SYSTEM WEST ZONE.

ELEVATIONS BASED ON USC&G S DATUM



300 0 300 600 900

SCALE 1" = 300' CONTOUR INTERVAL 1'

DATE OF PHOTOGRAPHY NOV 82
DATE OF MAPPING AUG 83

LEE COUNTY
FLORIDA

SECTION 1 T 45 S R 25 E



1-45-25