



COMPILED BY PHOTOGRAMMETRIC METHODS
BY

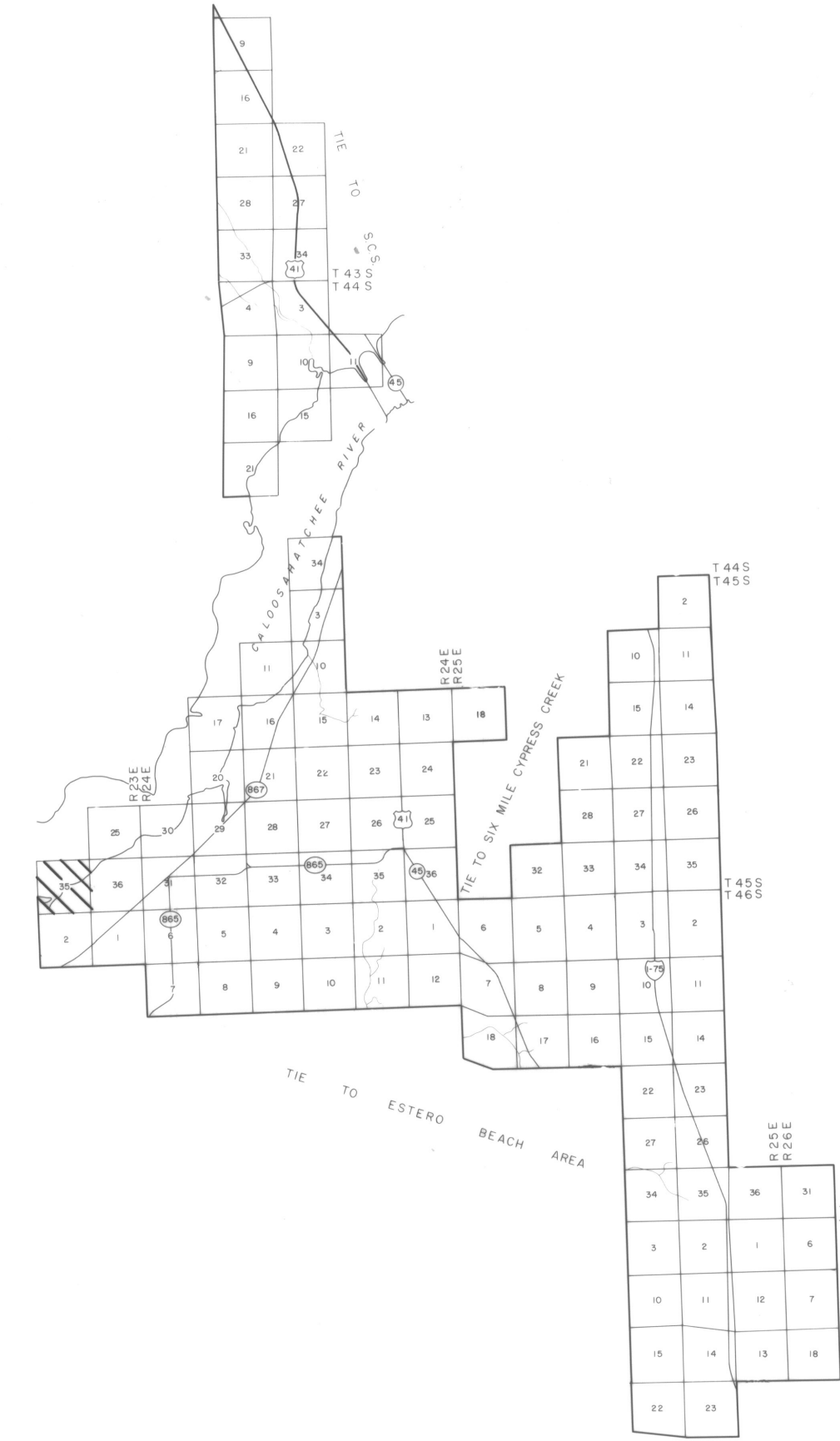
HAMRICK • Aerial Surveys, Inc.



CLEARWATER FLORIDA

LEGEND

HORIZONTAL CONTROL U.S.C.&G.S.	△
TRAVERSE STATIONS	4-5-2 ○
VERTICAL CONTROLS	9.13 X
SECTION CORNERS	2 1 11 12
CONTOURS	5 10 15
DEPRESSION CONTOURS	12.5
SPOT ELEVATIONS	12.5
T.B.M.	TBM X 7.2



GEODETIC CONTROL SURVEYS
BY



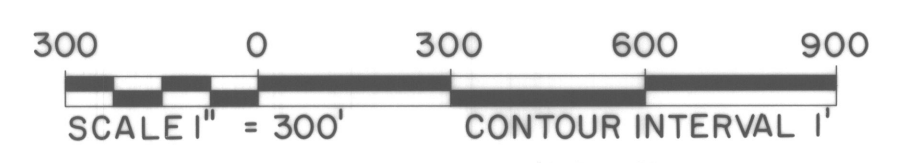
NOTE
ACCURACY - IT IS INTENDED THAT THIS MAPPING COMPLY WITH U.S. NATIONAL MAP ACCURACY STANDARDS. HOWEVER, SUCH ACCURACY OR ANY OTHER LEVEL OF ACCURACY IS NOT GUARANTEED BY LEE COUNTY, FLORIDA.

THE LAND LINE INFORMATION SHOWN HERE ON IS COMPILED FROM THE BEST AVAILABLE DATA AND DOES NOT NECESSARILY REPRESENT TRUE LAND LINE LOCATION.

DASHED CONTOURS AND UNDERLINED ELEVATIONS INDICATE STANDARD VERTICAL ACCURACY REDUCED BY HEAVY FOLIAGE COVER.

GRIDS BASED ON FLORIDA STATE PLANE COORDINATE SYSTEM WEST ZONE.

ELEVATIONS BASED ON USCGS DATUM.



DATE OF PHOTOGRAPHY NOV 81
DATE OF MAPPING MAY 82

LEE COUNTY
FLORIDA

SECTION 35 T 45 S R 23 E

35-45-23