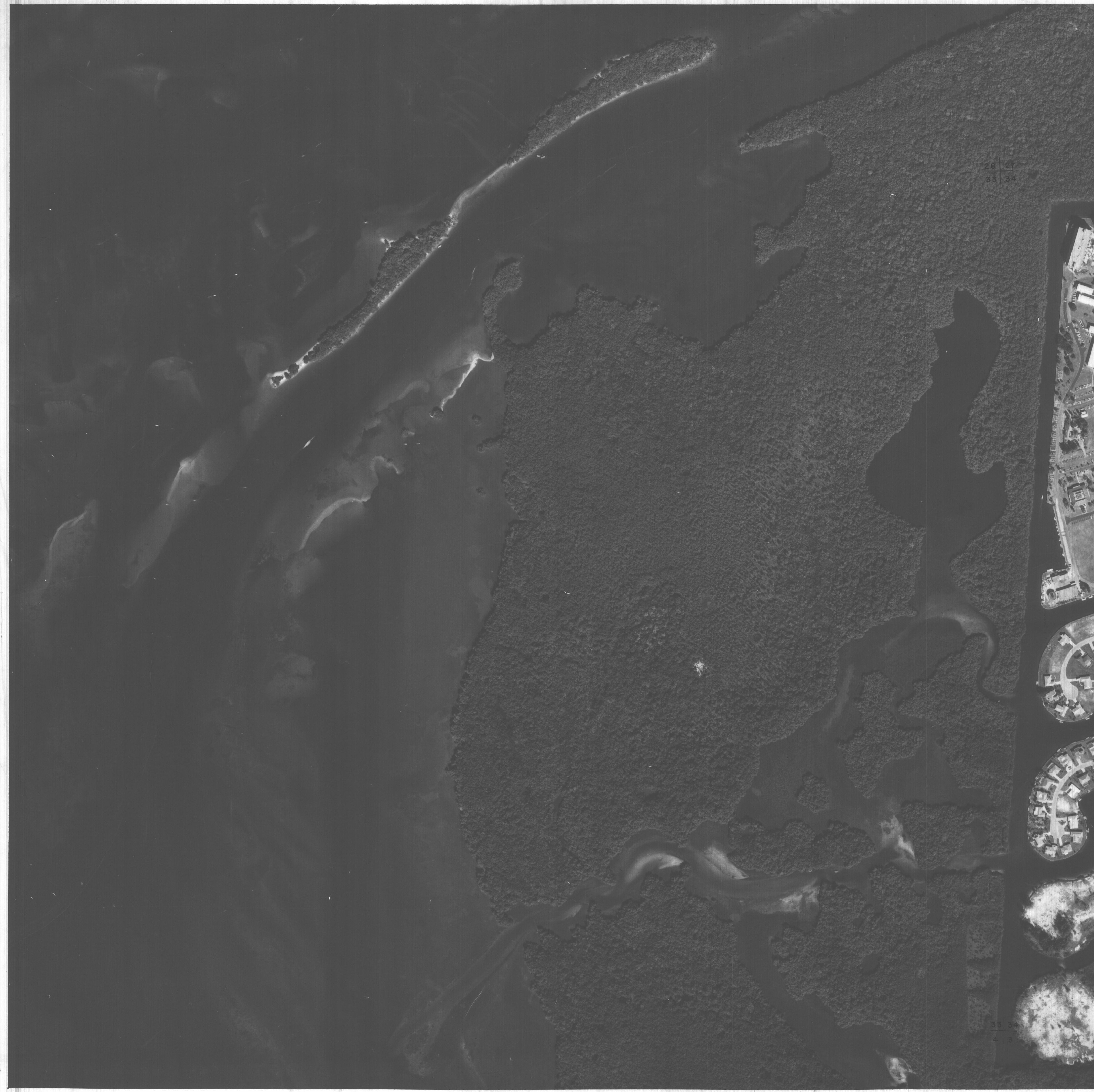


12-04-81



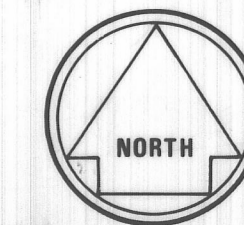
26 167
33 34

NOTE: LAND LINE INFORMATION IS BASED ON BEST AVAILABLE DATA AND DOES NOT NECESSARILY REPRESENT TRUE LINE LOCATION, ACCURACY REGARDING SCALE AND SECTIONAL CORNER LOCATION IS NOT GUARANTEED BY LEE COUNTY, FLA.

Prepared by
KUCERA
A ASSOCIATES, INC.
Photogrammetric Consultants
Melbourne, Florida
Lakeland, Florida
Atlanta, Georgia

SCALE 1" : 300'

LEE COUNTY , FLORIDA



SECTION- 33
TOWNSHIP- 45 S
RANGE- 23 E