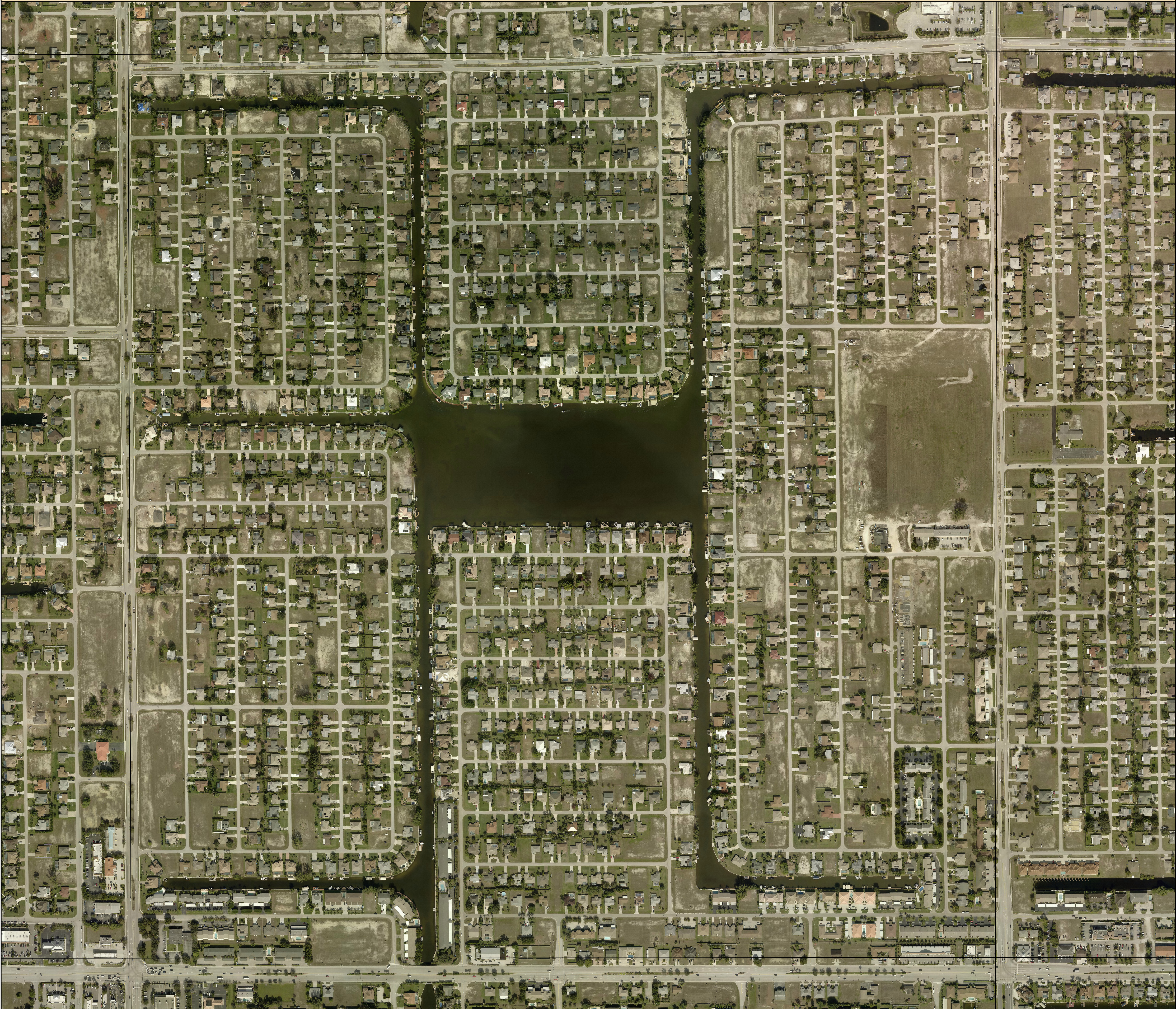
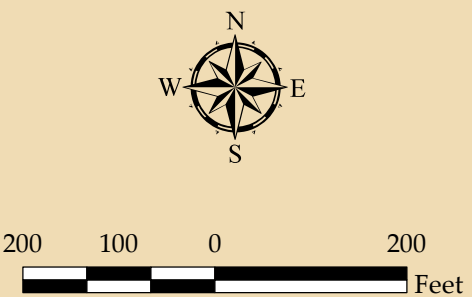


# S10-T45-R23 2017 Aerial



**MAP DISCLAIMER:**  
Maps and documents made available by the Lee County Property Appraiser's Office are created as part of a Geographic Information System (GIS) that compiles records, information, and data from various departments, cities, county, state and federal sources. Users are encouraged to examine the documentation or metadata associated with the data on which this map is based for information related to its accuracy, currency, and limitations.

**Source:** Lee County Property Appraiser  
Lee County BOCC  
Pictometry  
**Aerial Date:** January, 2016  
**Map Date:** October 16, 2017  
**Prepared By:** Walter Idlette  
**File Location:** G:\ArcMap\MXD\2017\S10-T45-R23 2017 Aerial\_36x36.mxd  
G:\StockMaps\StockMapsPDF\2017\S10-T45-R23 2017 Aerial\_36x36.pdf



Map Scale: 1 inch = 200 feet for Plot Size: 36" x 36"