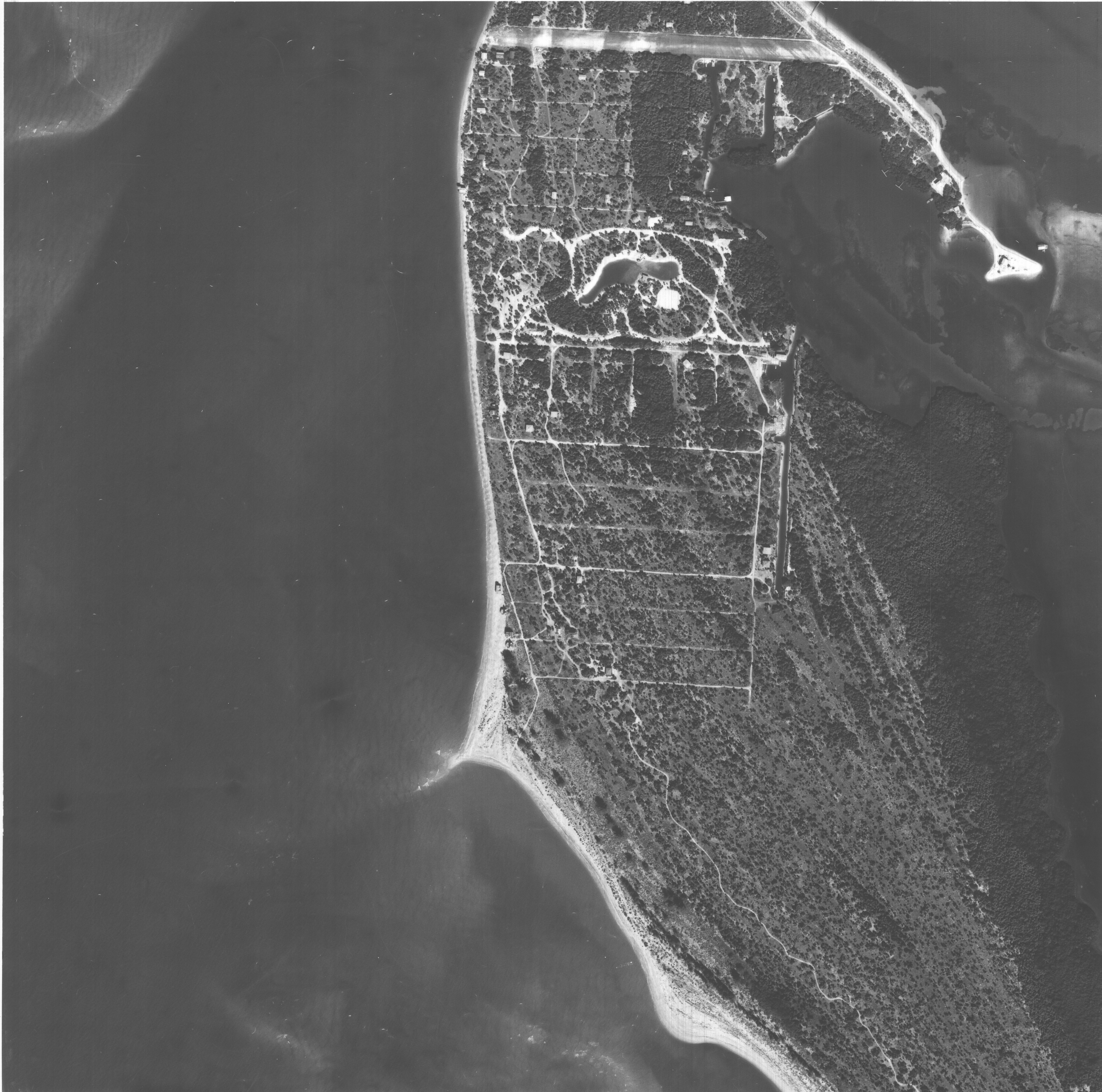


12-04-81

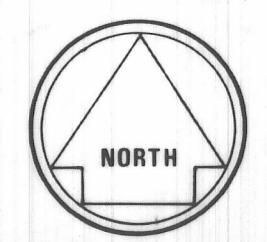


NOTE: LAND LINE INFORMATION IS BASED ON BEST AVAILABLE DATA AND DOES NOT NECESSARILY REPRESENT TRUE LINE LOCATION, ACCURACY REGARDING SCALE AND SECTIONAL CORNER LOCATION IS NOT GUARANTEED BY LEE COUNTY, FLA.

Prepared by  
**KUCERA**  
ASSOCIATES, INC.  
Photogrammetric Consultants  
Mobile Office: 904-688-1100  
Atlanta, GA

SCALE 1" : 300'

LEE COUNTY , FLORIDA



SECTION-5  
TOWNSHIP-45S  
RANGE-21E