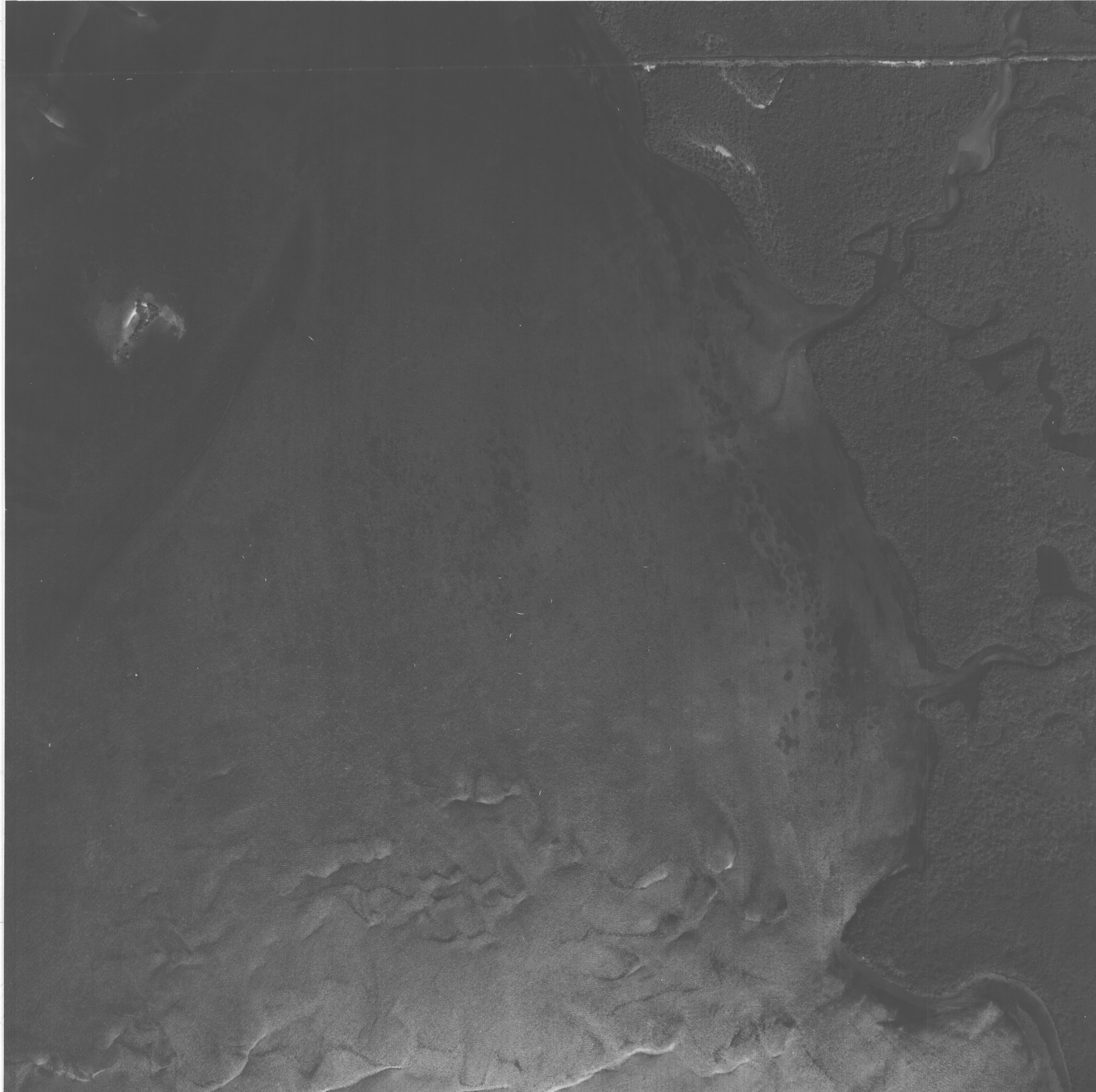


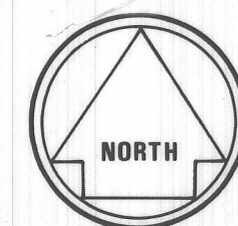
12-04-81



Prepared by
KUCERA
& ASSOCIATES, INC.
Photogrammetric Consultants
10000 W. 11th Ave., Suite 200
Atlanta, Ga.

SCALE 1" = 300'

LEE COUNTY , FLORIDA



SECTION - 13
TOWNSHIP-45S
RANGE-22E

NOTE: LAND LINE INFORMATION IS BASED ON BEST AVAILABLE DATA AND DOES NOT NECESSARILY REPRESENT TRUE LINE LOCATION, ACCURACY REGARDING SCALE AND SECTIONAL CORNER LOCATION IS NOT GUARANTEED BY LEE COUNTY, FLA.