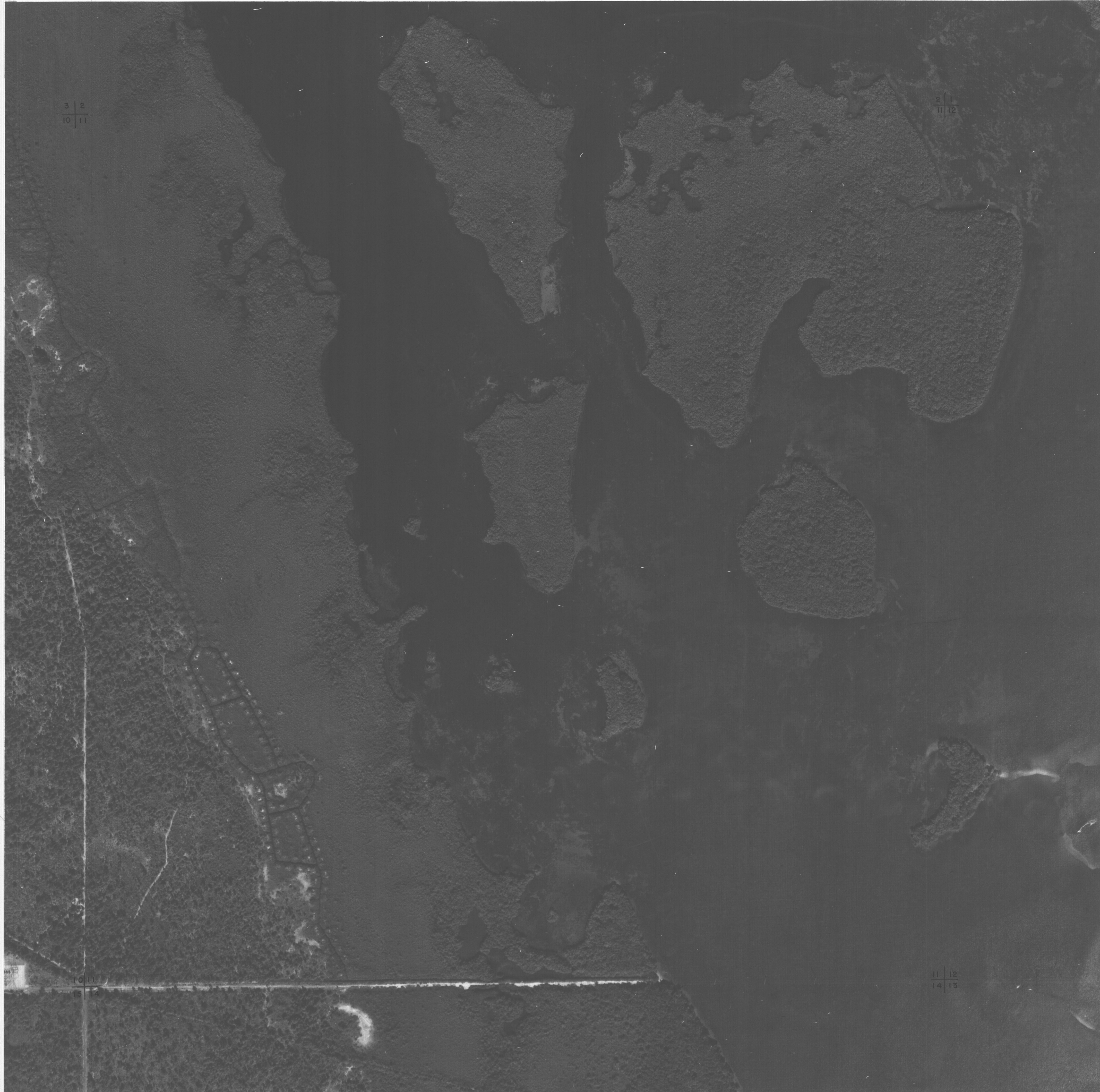


12-04-81



3 2
10 11

2 1
11 12

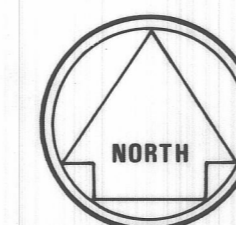
1 1
14 15

NOTE: LAND LINE INFORMATION IS BASED ON BEST AVAILABLE DATA AND DOES NOT NECESSARILY REPRESENT TRUE LINE LOCATIONS. THE LOCATION OF ANY CORNER OR POINT SHOWN ON THIS MAP IS NOT GUARANTEED BY LEE COUNTY, FLA.



SCALE 1" : 300'

LEE COUNTY , FLORIDA



SECTION-11
TOWNSHIP-45S
RANGE-22E