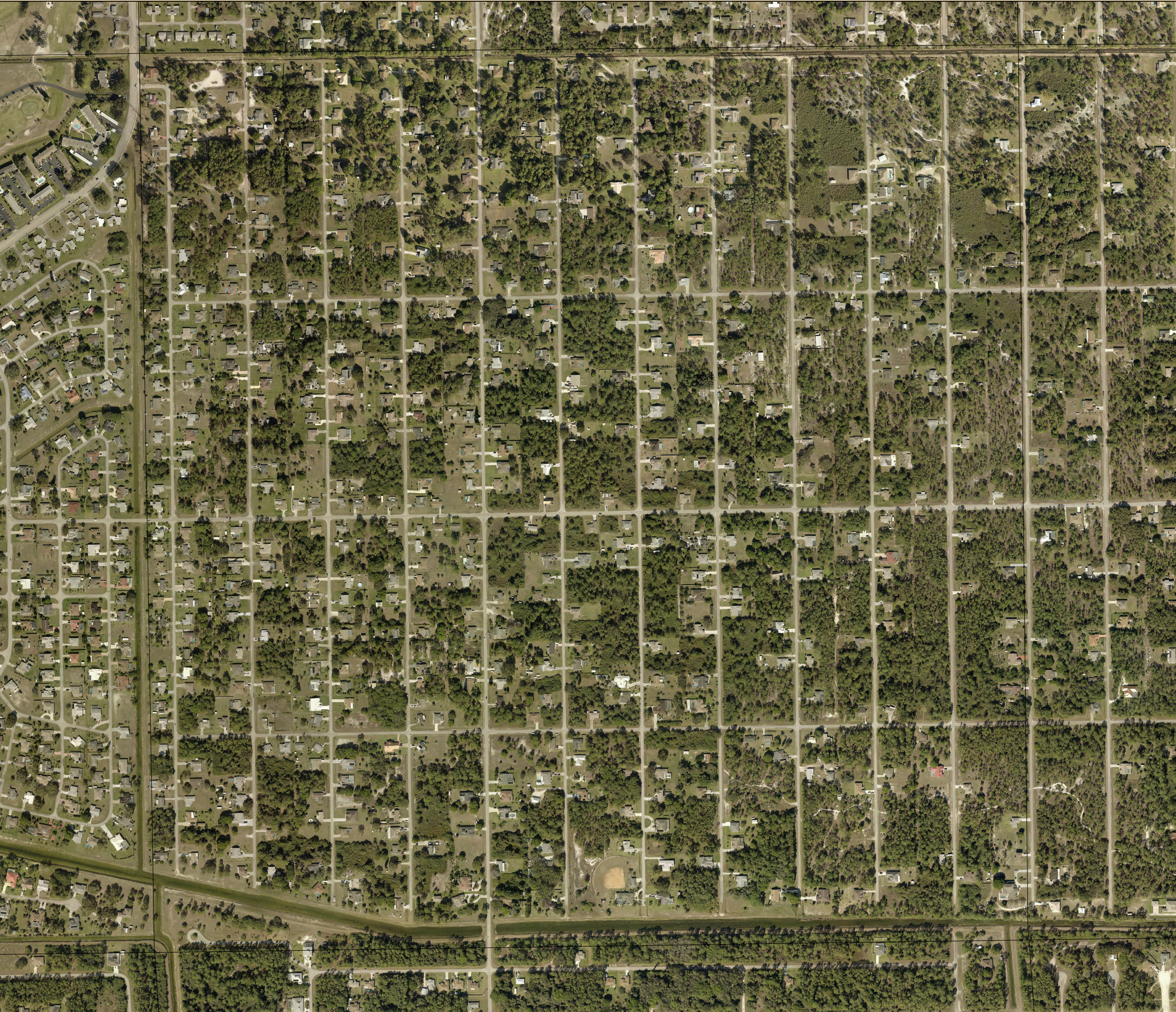


S35-T44-R27 2017 Aerial



MAP DISCLAIMER:
Maps and documents made available by the Lee County Property Appraiser's Office are created as part of a Geographic Information System (GIS) that compiles records, information, and data from various departments, cities, county, state and federal sources. Users are encouraged to examine the documentation or metadata associated with the data on which this map is based for information related to its accuracy, currency, and limitations.

Source:

Lee County Property Appraiser
Lee County BOCC
Pictometry

Aerial Date:

January, 2017

Map Date:


September 17, 2019

Prepared By:

Walter Idlette

File Location:

G:\ArcMapMXD\2019\S35-T44-R27 2017 Aerial_36x36.mxd
G:\StockMaps\StockMapsPDF\2019\S35-T44-R27 2017 Aerial_36x36.pdf



W
N
E
S

2001000200

Feet

Map Scale: 1 inch = 200 feet

for Plot Size: 36" x 36"