

E 627,000



N 856,500

N 856,500

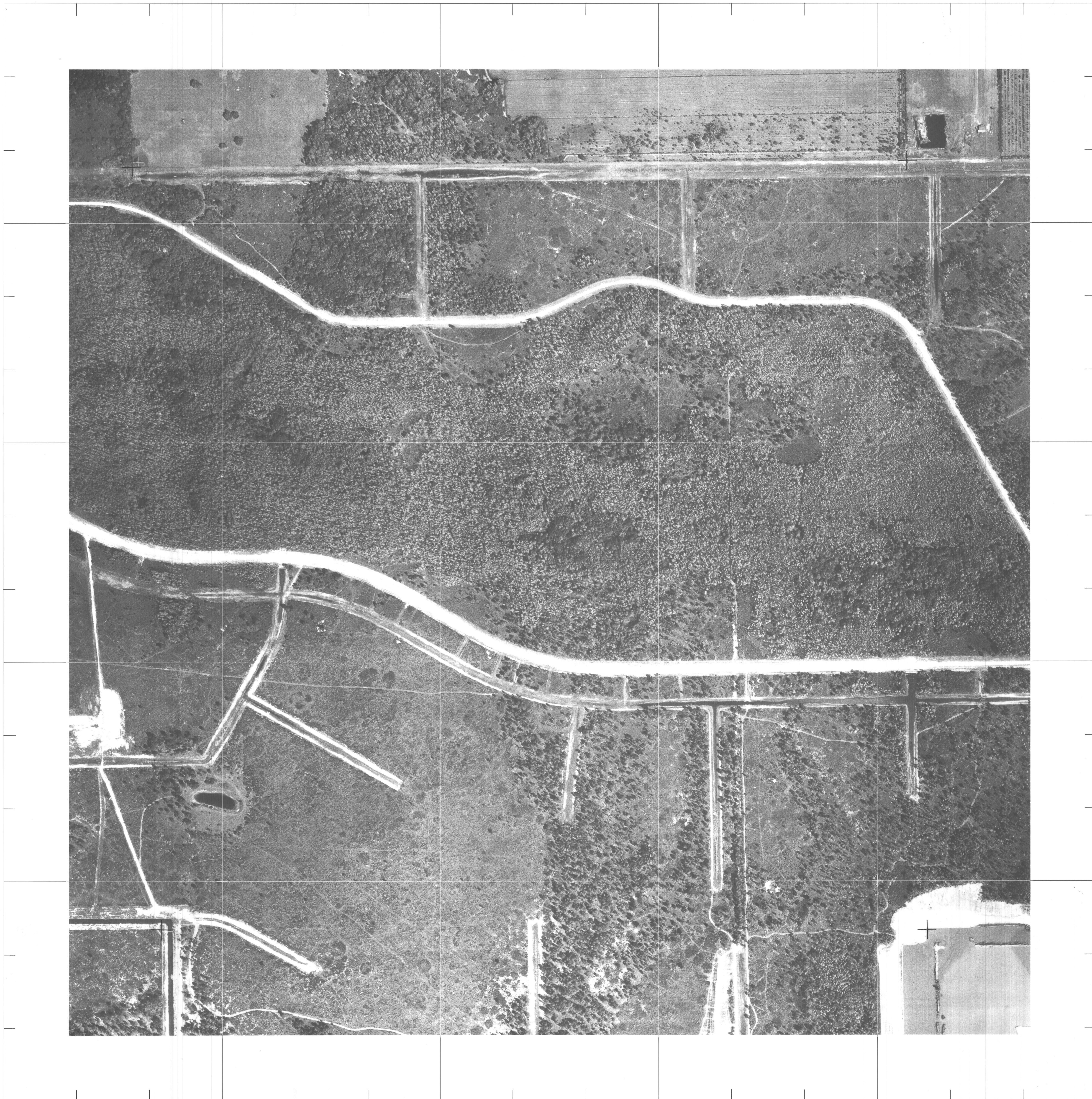
N 855,000

N 853,500

N 852,000

N 850,500

N 849,000



E 619,500 E 621,000 E 622,500 E 624,000 E 625,500 E 627,000

LEGEND

- HORIZONTAL CONTROL U.S.C. & G.S.
- FLORIDA D.O.T. CONTROL
- ESTABLISHED SECTION CORNER
- GEODETTIC CONTROL BY DENI ASSOC.
- SECTION CORNER (APPROX. LOCATION)

36	31	32	33	34	35	36	31
1	6	5	4	3	2	1	6
12	7	8	9	10	11	12	7
13	18	17	16	15	14	13	18
24	19	20	21	22	23	24	19
25	30	29	28	27	26	25	30
36	31	32	33	34	35	36	31
1	6	5	4	3	2	1	6

KEY MAP



NOTE:

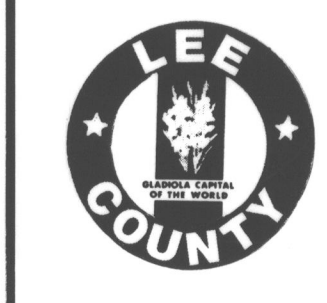
ACCURACY: IT IS INTENDED THAT THIS MAPPING COMPLY WITH U.S. NATIONAL MAP ACCURACY STANDARDS, HOWEVER SUCH ACCURACY OR ANY OTHER LEVEL OF ACCURACY IS NOT GUARANTEED BY LEE COUNTY, FLORIDA

LAND LINE INFORMATION SHOWN HERE ON IS COMPILED FROM THE BEST AVAILABLE DATA AND DOES NOT NECESSARILY REPRESENT TRUE LAND LINE LOCATION.

GRIDS BASED ON FLORIDA STATE PLANE COORDINATE SYSTEM, WEST ZONE.



SCALE 1" = 300'



County of Lee
DEPARTMENT OF INFORMATION SERVICES
FORT MYERS, FLORIDA

SEC. 4 -T 44S - R 27E

DATE OF PHOTOGRAPHY MARCH/1984

4-44-27